

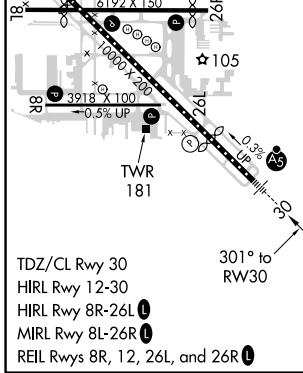
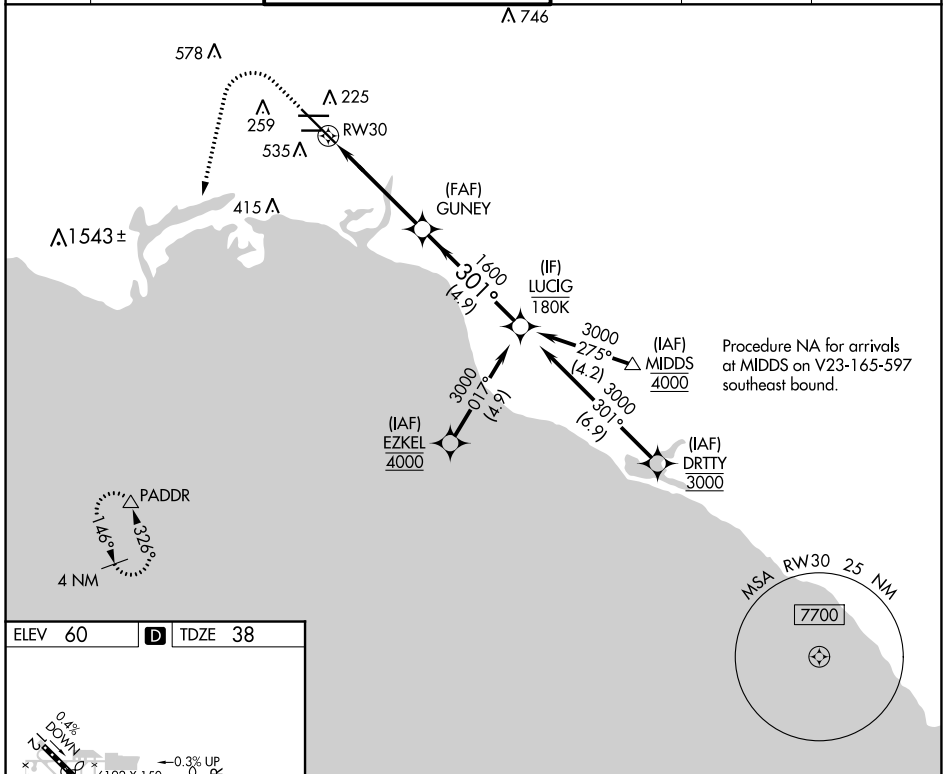
APP CRS	Rwy Idg	7414
301°	TDZE	38
	Apt Elev	60

RNAV (RNP) Y RWY 30

LONG BEACH/DAUGHERTY FIELD (LGB)

RNP AR APCH.		MALSR	MISSED APPROACH: Climb to 800 then climbing left turn to 3000 direct PADDR and hold.	

ATIS	SOCAL APP CON	LONG BEACH TOWER*	GND CON	CLNC DEL	UNICOM
127.75	125.35 316.125	120.5 257.6 (Rwy 12) 119.4 (CTAF) 257.6 (Rwy 30)	133.0 257.6	118.15	122.95



ELEV 60	D	TDZE 38		
		VGSI and RNAV glidepath not coincident (VGSI Angle 3.00/TCH 73).		
		LUCIG		
		GP 3.00° TCH 58		
TDZ/CL Rwy 30	HIRL Rwy 12-30	HIRL Rwy 8R-26L		
MIRL Rwy 8L-26R	REIL Rwy 8R, 12, 26L, and 26R			
CATEGORY RNP 0.30 DA	A	B	C	D
		384/30	346 (400-5%)	
AUTHORIZATION REQUIRED				

SW-3, 31 DEC 2020 to 28 JAN 2021

SW-3, 31 DEC 2020 to 28 JAN 2021