

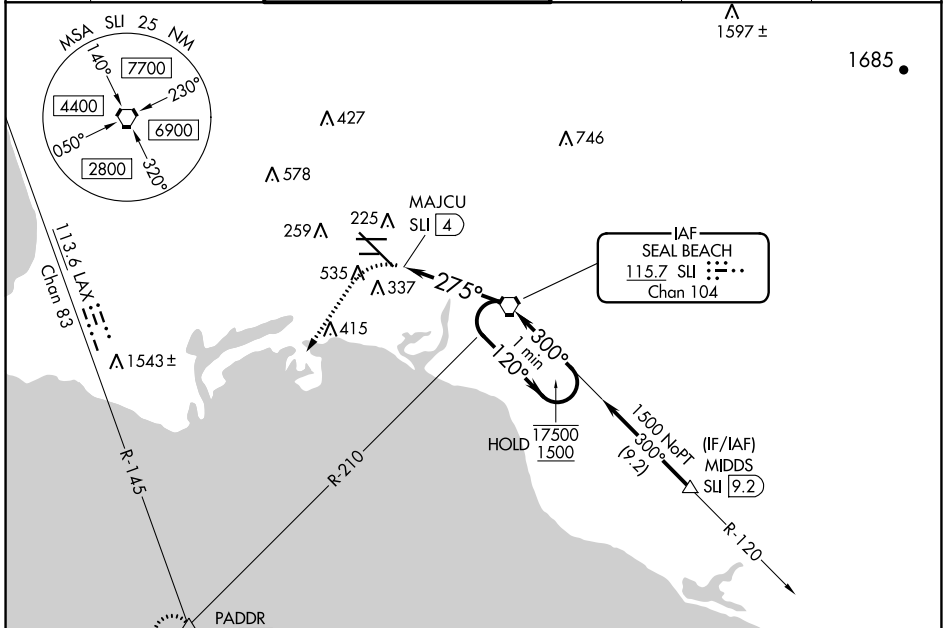
VORTAC SUI 115.7 Chan 104	APP CRS 275°	Rwy ldg TDZE Apt Elev	7414 38 60
---	------------------------	-----------------------------	---------------------------------------

VOR or TACAN RWY 30

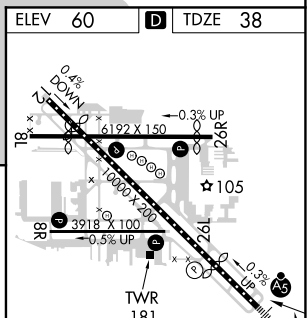
LONG BEACH/DAUGHERTY FIELD (LGB)

Rwy 30 helicopter visibility reduction below RVR 4000 NA. Inop table does not apply.	MALS R 	MISSED APPROACH: Climbing left turn to 3000 on heading 200° and LAX VORTAC R-145 to PADDR INT/LAX 21.8 DME and hold.

ATIS 127.75	SOCAL APP CON 125.35 316.125	LONG BEACH TOWER* 120.5 257.6 (Rwy 12) 119.4 (CTAF) 257.6 (Rwy 30)	GND CON 133.0 257.6	CLNC DEL 118.15	UNICOM 122.95
-----------------------	--	---	-------------------------------	---------------------------	-------------------------



ELEV 60	D TDZE 38
---------	------------------



3000 hdg 200°	LAX R-145	PADDR	VGSIs and descent angles not coincident SUI VORTAC (VGSIs Angle 3.00/TCH 73) One Minute Holding Pattern

CATEGORY	A	B	C	D
S-30	600/55 562 (600-1)		600-1 5/8 562 (600-1 5/8)	
CIRCLING	840-1 780 (800-1)		840-2 1/4 780 (800-2 1/4)	840-2 1/2 780 (800-2 1/2)
				TDZ/CL Rwy 30 HIRL Rwy 12-30 HIRL Rwy 8R-26L MIRL Rwy 8L-26R REIL Rws 8R, 12, 26L, and 26R FAF to MAP 4 NM Knots 60 90 120 150 180 Min:Sec 4:00 2:40 2:00 1:36 1:20

SW-3, 31 DEC 2020 to 28 JAN 2021

SW-3, 31 DEC 2020 to 28 JAN 2021