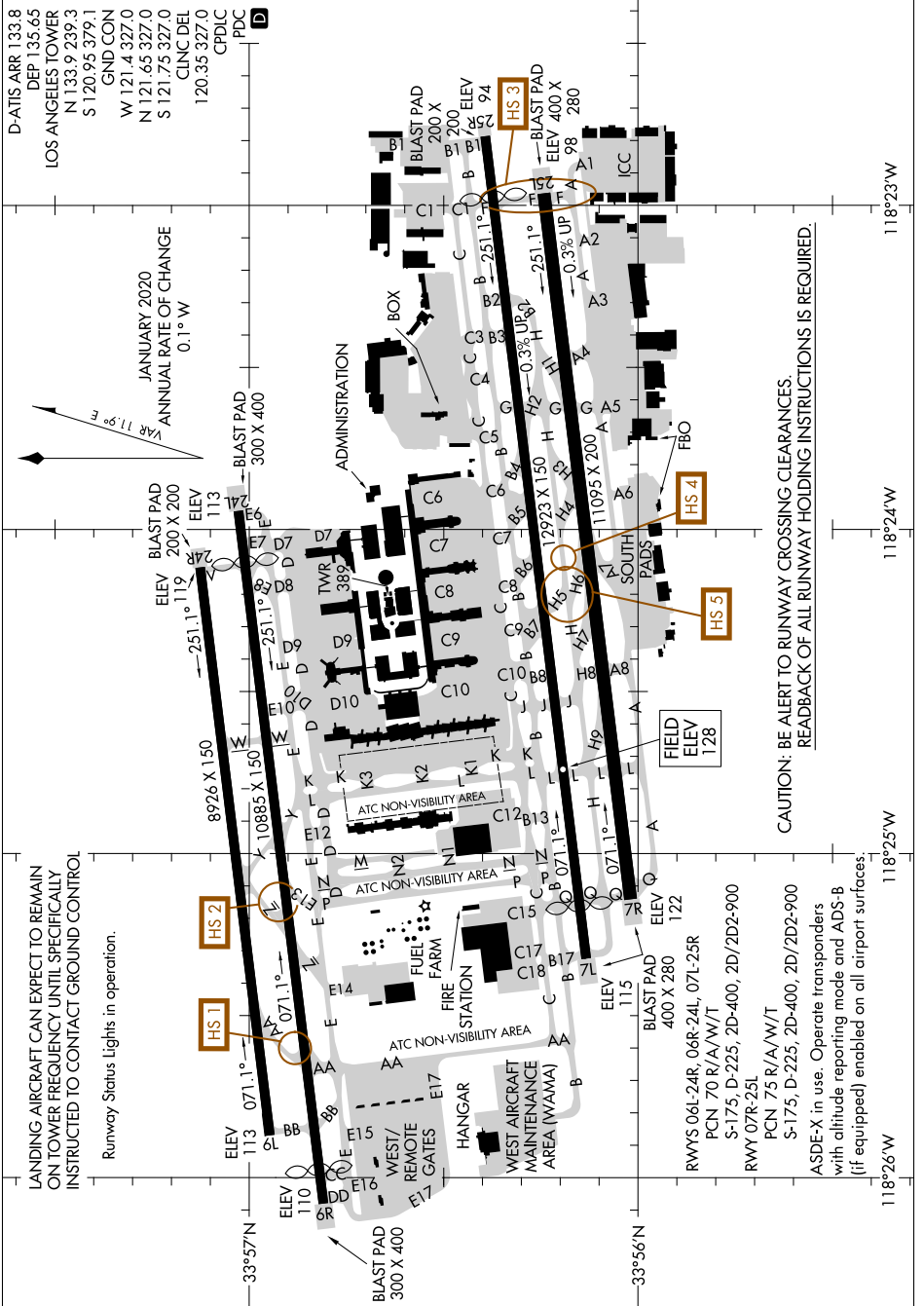


# AIRPORT DIAGRAM

AL-237 (FAA)

LOS ANGELES INTL (LAX)  
LOS ANGELES, CALIFORNIA

SW-3, 31 DEC 2020 to 28 JAN 2021



# AIRPORT DIAGRAM

LOS ANGELES, CALIFORNIA  
LOS ANGELES INTL (LAX)

SW-3, 31 DEC 2020 to 28 JAN 2021

LANDING AIRCRAFT CAN EXPECT TO REMAIN ON TOWER FREQUENCY UNTIL SPECIFICALLY INSTRUCTED TO CONTACT GROUND CONTROL

Runway Status Lights in operation.

JANUARY 2020  
ANNUAL RATE OF CHANGE  
0.1° W

VAR 11.9° E

CAUTION: BE ALERT TO RUNWAY CROSSING CLEARANCES  
READBACK OF ALL RUNWAY HOLDING INSTRUCTIONS IS REQUIRED.

RWYS 06L/24R, 06R/24L, 07L/25R  
PCN 70 R/A/W/T  
S-175, D-225, 2D-400, 2D/2D2-900  
RWY 07R-25L  
PCN 75 R/A/W/T  
S-175, D-225, 2D-400, 2D/2D2-900  
ASDE-X in use. Operate transponders with altitude reporting mode and ADS-B (if equipped) enabled on all airport surfaces.

D-ATIS ARR 133.8  
DEP 135.65  
LOS ANGELES TOWER  
N 133.9 239.3  
S 120.95 379.1  
GND CON  
W 121.4 327.0  
N 121.65 327.0  
S 121.75 327.0  
CLNC DEL  
120.35 327.0  
CPDLC

BLAST PAD 300 X 400  
BLAST PAD 200 X 200  
BLAST PAD 200 X 200  
BLAST PAD 400 X 280  
BLAST PAD 300 X 400

ADMINISTRATION  
BOX  
TWR 389  
FBO  
FIELD ELEV 128  
SOUTH PADS  
ICC

ATC NON-VISIBILITY AREA  
ATC NON-VISIBILITY AREA  
ATC NON-VISIBILITY AREA  
ATC NON-VISIBILITY AREA

HANGAR  
WEST AIRCRAFT MAINTENANCE AREA (WAMA)  
FIRE STATION  
FUEL FARM  
WEST AIRCRAFT REMOTE GATES  
BLAST PAD 300 X 400

RWY 07R-25L  
RWY 07L-25R  
RWY 06R-24L  
RWY 06L-24R  
RWY 07R-25L  
RWY 07L-25R  
RWY 06R-24L  
RWY 06L-24R

BLAST PAD 300 X 400  
BLAST PAD 200 X 200  
BLAST PAD 200 X 200  
BLAST PAD 400 X 280  
BLAST PAD 300 X 400