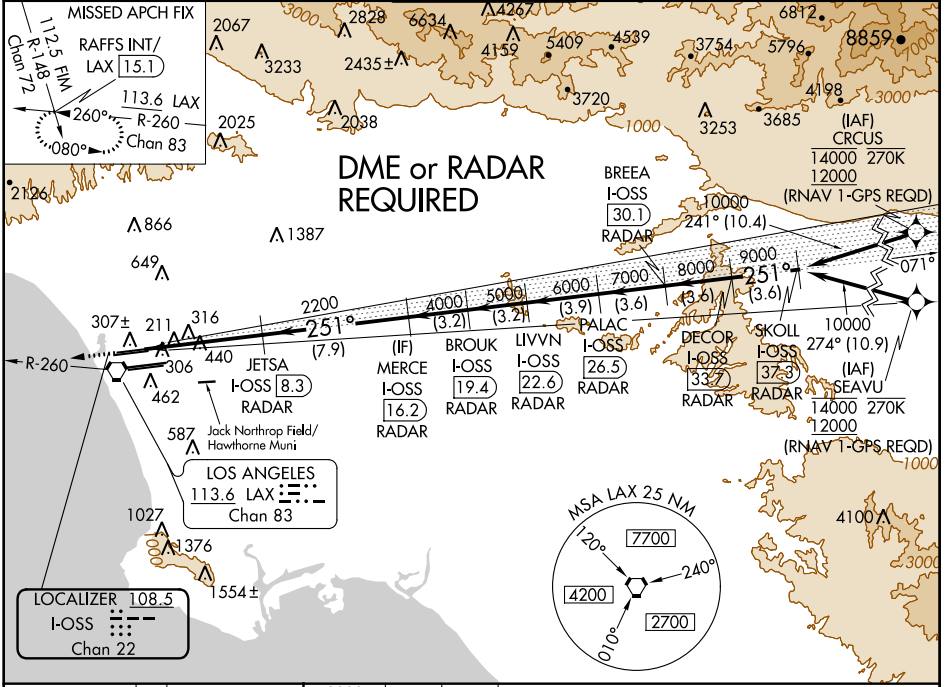


LOC/DME I-OSS 108.5 Chan 22	APP CRS 251°	Rwy Idg TDZE Apt Elev	8926 122 128
--	------------------------	-----------------------------	---

ILS RWY 24R (CAT II & III)

LOS ANGELES INTL (LAX)

<p>▼ DME or RADAR required. Simultaneous approach authorized. Simultaneous approach authorized with HHR.</p>		<p>ALSF-2</p>	<p>MISSED APPROACH: Climb to 2000 on heading 251° and LAX VORTAC R-260 to RAFFS INT/LAX 15.1 DME and hold.</p>		
<p>D-ATIS ARR 133.8 DEP 135.65</p>	<p>SO CAL APP CON 124.3 363.2 124.9 269.0 (090°-224°) 128.5 360.7 (045°-089°)</p>	<p>LOS ANGELES TOWER N 133.9 239.3 S 120.95 379.1</p>	<p>GND CON N 121.65 327.0 S 121.75 327.0 W 121.4 327.0</p>	<p>CLNC DEL 120.35 327.0</p>	<p>CPDLC</p>



SW-3, 31 DEC 2020 to 28 JAN 2021

SW-3, 31 DEC 2020 to 28 JAN 2021

ELEV 128	TDZE 122	2000	LAX R-260	RAFFS INT	<p>VGSI and ILS glidepath not coincident (VGSI Angle 3.00/TCH 73).</p>					
		<p>hdg 251°</p>	<p>JETA I-OSS (8.3) RADAR</p>	<p>MERCE I-OSS (19.4) RADAR</p>	<p>BROUK I-OSS (22.6) RADAR</p>	<p>LIVVN I-OSS (26.5) RADAR</p>	<p>PALAC I-OSS (30.1) RADAR</p>	<p>DECOR I-OSS (33.7) RADAR</p>	<p>SKOLL I-OSS (37.3) RADAR</p>	
		<p>1025°</p>	<p>6.4 NM</p>	<p>7.9 NM</p>	<p>3.2 NM</p>	<p>3.2 NM</p>	<p>3.9 NM</p>	<p>3.6 NM</p>	<p>3.6 NM</p>	<p>3.6 NM</p>
		CATEGORY	A	B	C	D				
		S-ILS 24R	CAT II RA 118/12 100 DA 222							
		S-ILS 24R	CAT III RVR 06							
<p>CATEGORY II & III ILS - SPECIAL AIRCREW & AIRCRAFT CERTIFICATION REQUIRED</p>										

LOS ANGELES, CALIFORNIA
Amdt 26 12OCT17

33°57'N-118°24'W

LOS ANGELES INTL (LAX)
ILS RWY 24R (CAT II & III)