

LOC/DME I-HQB 111.7 Chan 54	APP CRS 251°	Rwy Idg TDZE Apt Elev	24L 9483 123 128	24R 8925 122 128
---	------------------------	-----------------------------	--	--

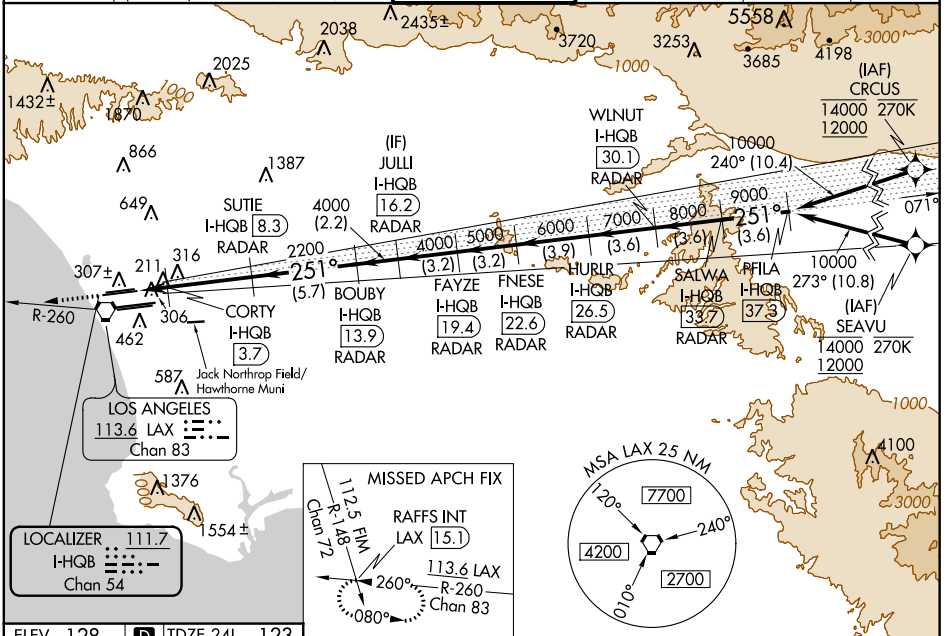
ILS or LOC RWY 24L

LOS ANGELES INTL (LAX)

From CRJCS: RNAV 1-GPS required. From SEAVU: RNAV 1-GPS required.
 DME or Radar required. RNAV 1-GPS or RADAR required for procedure entry.
 For inop ALS, increase Sidestep 24R Cat C visibility to 1½ SM. Simultaneous approach authorized. Simultaneous approach authorized with HHR. LOC procedure NA during simultaneous operations with HHR LOC RWY 25. Inop table does not apply to Sidestep RWY 24R Cat A and B.
 # RVR 1800 authorized with use of FD or AP or HUD to DA.

MALS Rwy 24L 	ALS F-2 Rwy 24R 	MISSED APPROACH: Climb to 2000 on heading 251° and LAX VORTAC R-260 to RAFFS INT/LAX 15.1 DME and hold.
------------------	---------------------	---

D-ATIS ARR 133.8 DEP 135.65	SOCAL APP CON 124.3 363.2 (APCH FM WEST) 124.5 235.975 (225°-044°)	124.9 269.0 (090°-224°) 128.5 360.7 (045°-089°)	LOS ANGELES TOWER N 133.9 239.3 S 120.95 379.1	GND CON N 121.65 327.0 S 121.75 327.0 W 121.4 327.0	CLNC DEL 120.35 327.0	CPDLC
---	--	--	--	---	---	-------



ELEV 128	TDZE 24L 123	TDZE 24R 122	VGSI and ILS glidepath not coincident (VGSI Angle 3.00/TCH 79).			
<p>2000</p> <p>hdg 251°</p> <p>251° 6.4 NM from FAF</p>			LAX R-260	RAFFS INT	SALWA I-HQB 33.7	PFLA I-HQB 37.3
<p>*LOC only.</p> <p>CORTY I-HQB 3.7</p> <p>SUTIE I-HQB 8.3</p> <p>BOUBY I-HQB 13.9</p> <p>JULLI I-HQB 16.2</p> <p>FAYZE I-HQB 19.4</p> <p>FNESE I-HQB 22.6</p> <p>HURLR I-HQB 26.5</p> <p>WLNUT I-HQB 30.1</p>			<p>2000</p> <p>4000</p> <p>4000</p> <p>5000</p> <p>6000</p> <p>7000</p> <p>8000</p> <p>9000</p> <p>10000</p>			
<p>*I-HQB 2.9</p> <p>740*</p> <p>2200</p>			<p>1 NM 0.8</p> <p>4.6 NM</p> <p>5.7 NM</p> <p>2.2 NM</p> <p>3.2 NM</p> <p>3.2 NM</p> <p>3.9 NM</p> <p>3.6 NM</p> <p>3.6 NM</p> <p>3.6 NM</p>			
<p>TDZ/CL Rwy 6R, 7L, 24R, and 25L</p> <p>HIRL all Rwy</p> <p>FAF to MAP 6.4 NM</p>			<p>CATEGORY A B C D</p>			
<p>S-ILS 24L#</p>			<p>323/24 200 (200-½)</p>			
<p>S-LOC 24L</p>			<p>500/24 377 (400-½)</p>		<p>500-1¼ 377 (400-1¼)</p>	
<p>SIDESTEP 24R</p>			<p>500/55 378 (400-1)</p>		<p>500-1¼ 378 (400-1¼)</p> <p>500-1½ 378 (400-1½)</p>	

SW-3, 31 DEC 2020 to 28 JAN 2021

SW-3, 31 DEC 2020 to 28 JAN 2021