

LOC/DME I-LAX	APP CRS	Rwy Idg	25L	25R
109.9	251°	TDZE	11095	11134
Chan 36		Apt Elev	104	104

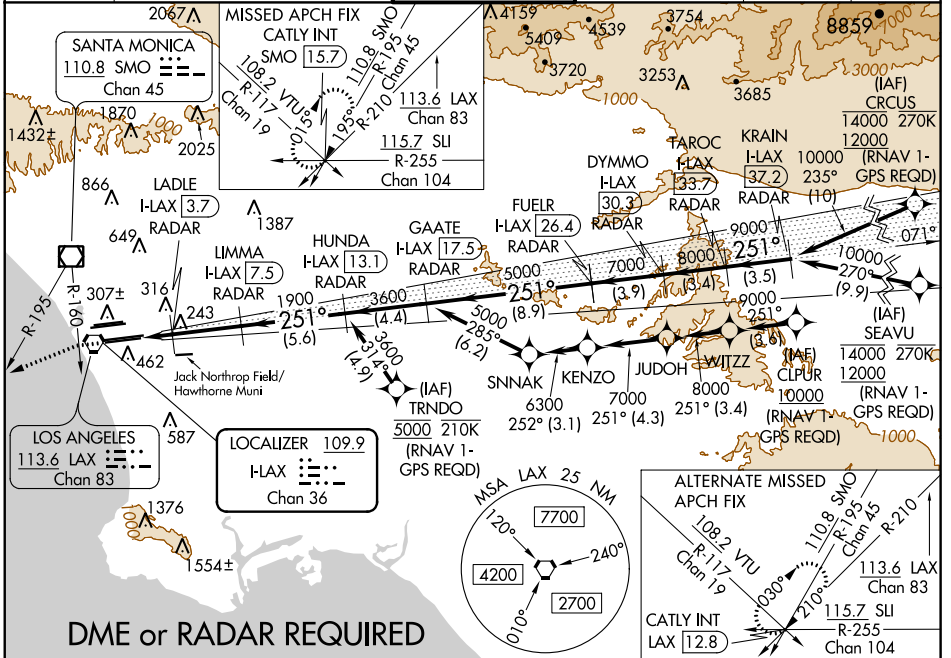
ILS or LOC RWY 25L

LOS ANGELES INTL (LAX)

▼ DME or RADAR required. Simultaneous approach authorized. Simultaneous approach authorized with HHR. LOC procedure NA during simultaneous operations with HHR LOC RWY 25.

ALSIF-2 Rwy 25L	MALSR Rwy 25R	MISSED APPROACH: Climb to 2000 on heading 251° until crossing the SMO R-160, then left turn on heading 236° and on the SMO R-195 to CATLY INT/SMO 15.7 DME and hold.
-----------------	---------------	--

D-ATIS ARR 133.8 DEP 135.65	SOCAL APP CON 124.3 363.2 (APCH FM WEST) 124.5 235.975 (225°-044°)	LOS ANGELES TOWER N 133.9 239.3 S 120.95 379.1 (090°-224°) (045°-089°)	GND CON N 121.65 327.0 S 121.75 327.0 W 121.4 327.0	CLNC DEL 120.35 327.0	CPDLC
--	--	--	---	---	-------



SW-3, 31 DEC 2020 to 28 JAN 2021

SW-3, 31 DEC 2020 to 28 JAN 2021

2000 hdg 251°	SMO R-160	SMO R-195	CATLY INT	VGSi and ILS glidepath not coincident (VGSi Angle 3.00/TCH 70).					ELEV 128	TDZE 25L 104	TDZE 25R 104					
*LOC only	LADLE I-LAX 3.7	LIMMA I-LAX 7.5	HUNDA I-LAX 13.1	GAATE I-LAX 17.5	FUELR I-LAX 26.4	DYMMO I-LAX 30.3	TAROC I-LAX 33.7	KRAIN I-LAX 37.2								
	1900	1900	3600	5000	7000	8000	9000	10000	GS 3.00° TCH 54'							
	1.2	0.6	3.7 NM	5.6 NM	4.4 NM	8.9 NM	3.9 NM	3.4 NM	3.5 NM							
CATEGORY	A															
S-ILS 25L	304/18 200 (200-½)															
S-LOC 25L	540/24 436 (500-½)				540/40 436 (500-¾)											
SIDESTEP 25R	540/55 436 (500-1)						540-1½ 436 (500-1½)									
TDZ/CL Rwy 6R, 7L, 24R, and 25L HIRL all Rwy											FAF to MAP 5.5 NM					
											Knots	60	90	120	150	180
											Min:Sec	5:30	3:40	2:45	2:12	1:50