

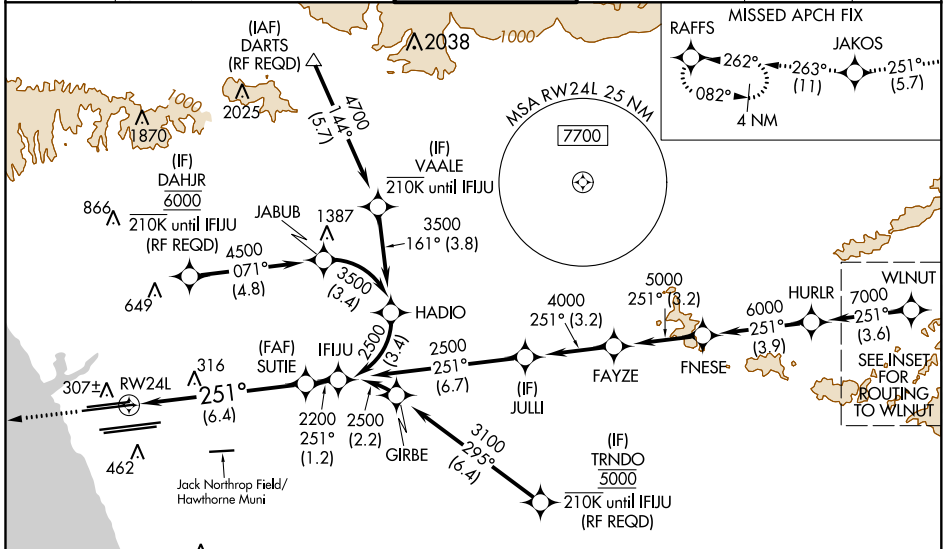
APP CRS	Rwy Idg	<b>9483</b>
<b>251°</b>	TDZE	<b>123</b>
	Apt Elev	<b>128</b>

# RNAV (RNP) Z RWY 24L

LOS ANGELES INTL (LAX)

<p>▼ For uncompensated Baro-VNAV systems, procedure NA below 5°C (41°F) or above 54°C (130°F). Simultaneous approach authorized. Simultaneous approach authorized with KHHR. GPS required. For inop ALS, increase RNP 0.15 all Cats visibility to 1½ SM.</p>	<p>MALSR</p>	<p>MISSED APPROACH: Climb to 2000 on track 251° to JAKOS and track 263° to RAFFS and hold.</p>
--	--------------	--

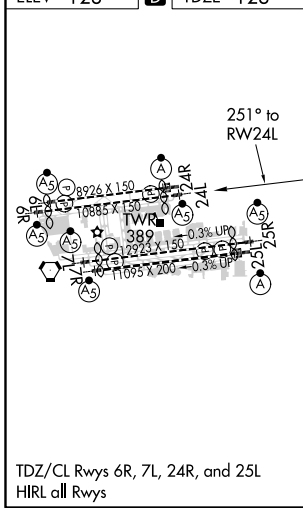
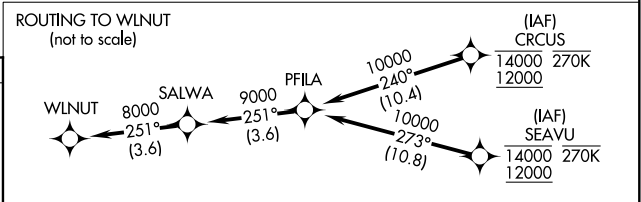
D-ATIS	SOCAL APP CON	LOS ANGELES TOWER	GND CON	CLNC DEL	CPDLC
ARR <b>133.8</b>	<b>124.3 363.2</b> (APCH FM WEST)	<b>124.9 269.0</b> (090°-224°)	<b>N 121.65 327.0</b> <b>S 121.75 327.0</b> <b>W 121.4 327.0</b>	<b>120.35</b> <b>327.0</b>	
DEP <b>135.65</b>	<b>124.5 235.975</b> (225°-044°)	<b>128.5 360.7</b> (045°-089°)			



SW-3, 31 DEC 2020 to 28 JAN 2021

SW-3, 31 DEC 2020 to 28 JAN 2021

ELEV <b>128</b>	<b>D</b>	TDZE <b>123</b>
-----------------	----------	-----------------



2000	JAKOS	fr 263°	RAFFS	See planview for multiple IF locations.	IFJU
tr 251°					
VGSIs and RNAV glidepath not coincident (VGSi Angle 3.00/TCH 59).					
RW24L		SUTIE 2200		IFJU 2500	
GP 3.00°		TCH 59			
6.4 NM		1.2 NM			

CATEGORY	A	B	C	D
RNP 0.15 DA		545/50	422 (500-1)	
RNP 0.30 DA		592/60	469 (500-1½)	
<b>AUTHORIZATION REQUIRED</b>				