

APP CRS	Rwy Idg	<b>11095</b>
<b>251°</b>	TDZE	<b>104</b>
	Apt Elev	<b>128</b>

# RNAV (RNP) Z RWY 25L

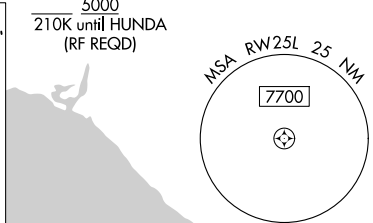
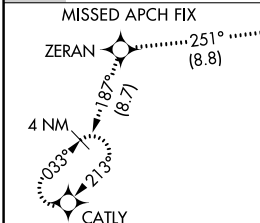
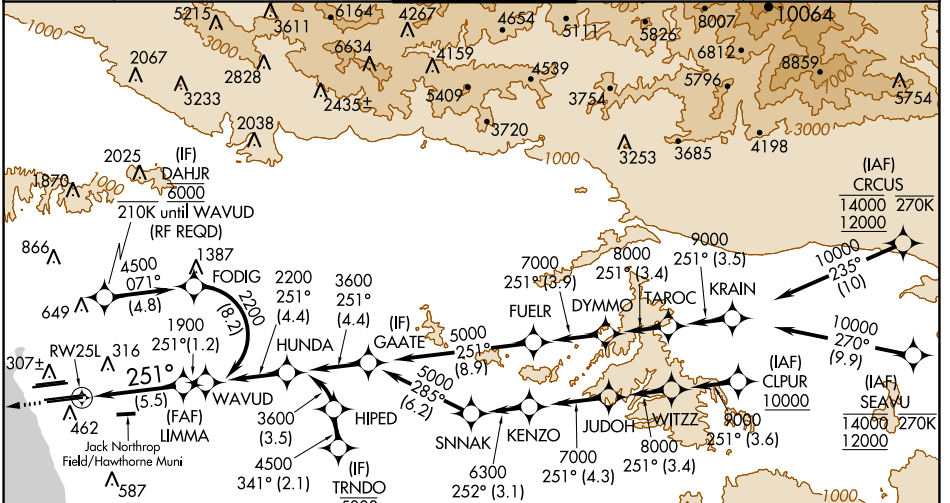
LOS ANGELES INTL (LAX)

For uncompensated Baro-VNAV systems, procedure N/A below 5°C (41°F) or above 54°C (130°F).  
GPS required. Simultaneous approach authorized.  
Simultaneous approach authorized with HHR.

ALSF-2

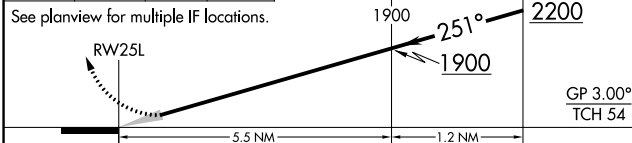
MISSED APPROACH: Climb to 2000 on track 251° to ZERAN and on track 187° to CATLY and hold.

D-ATIS ARR <b>133.8</b> DEP <b>135.65</b>	SOCL APP CON <b>124.3 363.2</b> (APCH FM WEST) <b>124.5 235.975</b> (225°-044°)	<b>124.9 269.0</b> (090°-224°) <b>128.5 360.7</b> (045°-089°)	LOS ANGELES TOWER <b>N 133.9 239.3</b> <b>S 120.95 379.1</b>	GND CON <b>N 121.65 327.0</b> <b>S 121.75 327.0</b> <b>W 121.4 327.0</b>	CLNC DEL <b>120.35</b> <b>327.0</b>	CPDLC
---	---	--	--	---	---	-------

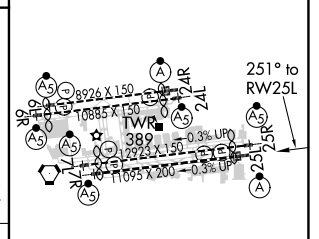


2000	ZERAN	tr 187°	CATLY
↑	✧		✧
tr 251°			

VGSI and RNAV glidepath not coincident.  
(VGSI Angle 3.00/TCH 70).  
WAVUD



ELEV 128	<b>D</b> TDZE 104
----------	-------------------



CATEGORY	A	B	C	D
RNP 0.15 DA		445/30	341 (400-5%)	
RNP 0.30 DA		543/50	439 (500-1)	
<b>AUTHORIZATION REQUIRED</b>				

TDZ/CL Rwws 6R, 7L, 24R, and 25L  
HIRL all Rwws

SW-3, 31 DEC 2020 to 28 JAN 2021

SW-3, 31 DEC 2020 to 28 JAN 2021