


APP CRS	Rwy Idg	11259
071°	TDZE	128
	Apt Elev	128

RNAV (RNP) Z RWY 7L

LOS ANGELES INTL (LAX)

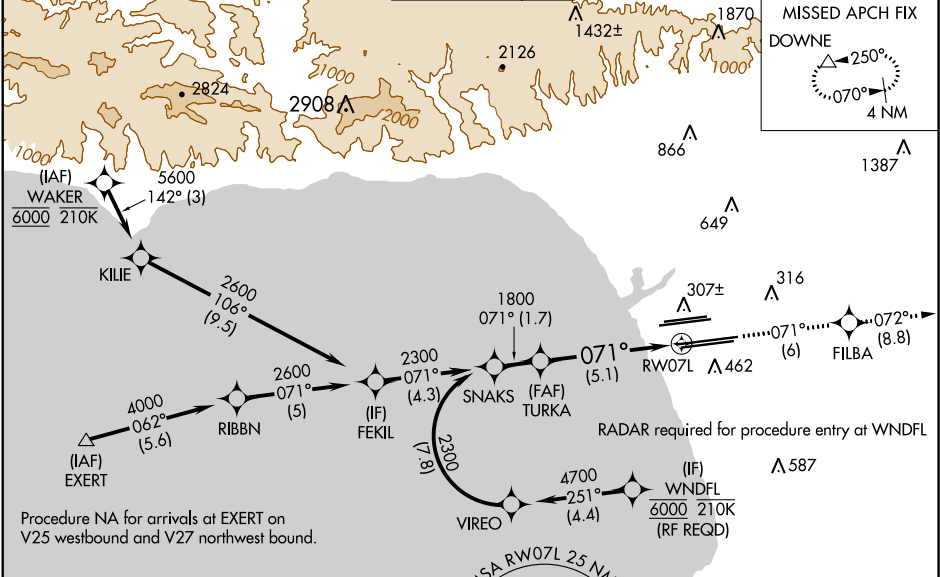
For uncompensated Baro-VNAV systems, procedure NA below 5°C (41°F) or above 54°C (130°F). GPS required. Simultaneous approach authorized. For inop ALS, increase RNP 0.11 all Cats visibility to RVR 5000 and RNP 0.30 all Cats visibility to RVR 6000.

MALSR



MISSED APPROACH: Climb to 3000 on track 071° to FILBA and on track 072° to DOWNE and hold.

D-ATIS	SOCAL APP CON	LOS ANGELES TOWER	GND CON	CLNC DEL	CPDLC
ARR 133.8	124.3 363.2 (APCH FM WEST)	124.9 269.0 (090°-224°)	N 121.65 327.0 S 121.75 327.0 W 121.4 327.0	120.35 327.0	
DEP 135.65	124.5 235.975 (225°-044°)	128.5 360.7 (045°-089°)			



SNAKS	TURKA	tr 071°	FILBA	tr 072°	DOWNE
2300	1800				
GP 3.00°					
TCH 59					
	1.7 NM		5.1 NM		

CATEGORY	A	B	C	D
RNP 0.11 DA		441/24	313 (400-½)	
RNP 0.30 DA		485/40	357 (400-¾)	

AUTHORIZATION REQUIRED

ELEV 128

TDZE 128

071° to RW07L

TDZ/CL Rwy 6R, 7L, 24R, and 25L

HIRL all Rwys

SW-3, 31 DEC 2020 to 28 JAN 2021

SW-3, 31 DEC 2020 to 28 JAN 2021