

WAAS CH <b>69307</b> <b>W24A</b>	APP CRS <b>251°</b>	Rwy Idg TDZE Apt Elev	<b>8926</b> <b>122</b> <b>128</b>
--	------------------------	-----------------------------	---

# RNAV (GPS) Y RWY 24R

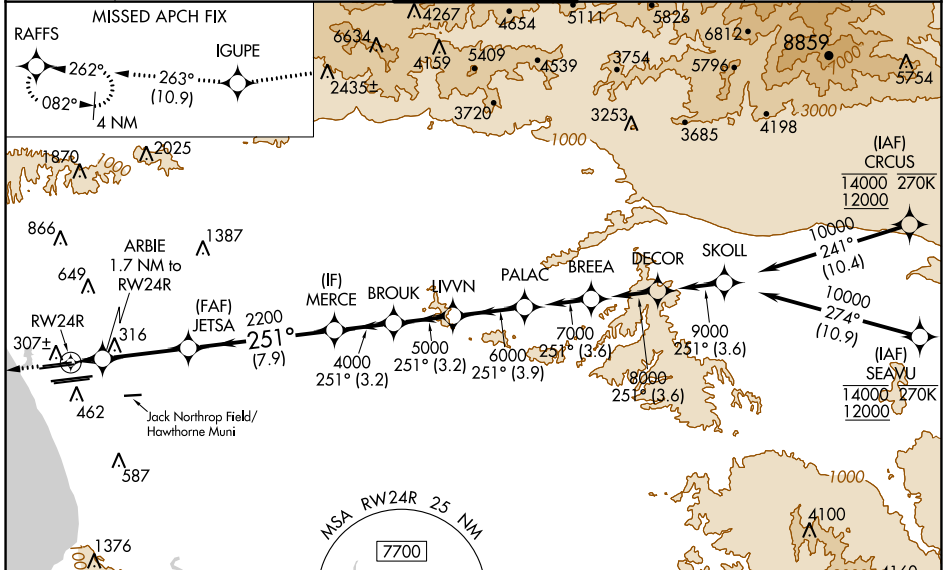
LOS ANGELES INTL (LAX)

▼ For uncompensated Baro-VNAV systems, LNAV/VNAV NA below 6°C (43°F) or above 54°C (130°F). DME/DME RNP-0.3 NA. Simultaneous approach authorized. Simultaneous approach authorized with HHR. LNAV procedure NA during simultaneous operations. Use of FD or AP providing RNAV track guidance required during simultaneous operations. For inop ALS, increase LNAV/VNAV all Cnts visibility to 1½ SM, and LNAV Cat C/D visibility to 1¾ SM.

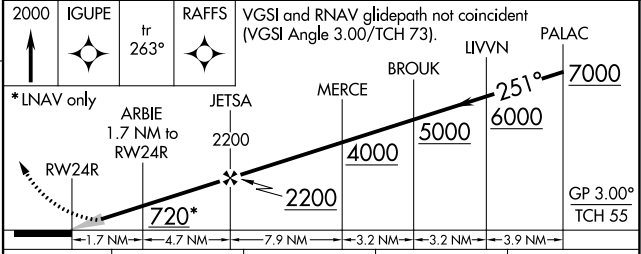
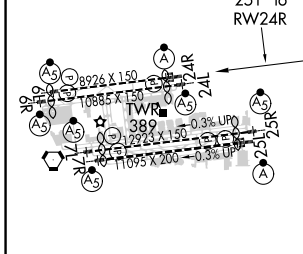


MISSED APPROACH: Climb to 2000 direct IGUPE and on track 263° to RAFFS and hold.

D-ATIS ARR <b>133.8</b> DEP <b>135.65</b>	SOCAL APP CON <b>124.3 363.2</b> (APCH FM WEST) <b>124.5 235.975</b> (225°-044°)	<b>124.9 269.0</b> (090°-224°) <b>128.5 360.7</b> (045°-089°)	LOS ANGELES TOWER <b>N 133.9 239.3</b> <b>S 120.95 379.1</b>	GND CON <b>N 121.65 327.0</b> <b>S 121.75 327.0</b> <b>W 121.4 327.0</b>	CLNC DEL <b>120.35</b> <b>327.0</b>	CPDLC
---	--	--	--	---	---	-------



ELEV 128	<b>D</b>	TDZE 122
----------	----------	----------



CATEGORY	A	B	C	D
LPV DA		322/18	200 (200-½)	
LNAV/VNAV DA		589/60	467 (500-1¼)	
LNAV MDA	640/24	518 (600-½)	640/55	518 (600-1)

SW-3, 31 DEC 2020 to 28 JAN 2021

SW-3, 31 DEC 2020 to 28 JAN 2021