

WAAS CH <b>42504</b> <b>W07A</b>	APP CRS <b>071°</b>	Rwy Idg TDZE <b>128</b> Apt Elev <b>128</b>	<b>11259</b>
--	------------------------	---	--------------

# RNAV (GPS) Y RWY 7L

LOS ANGELES INTL (LAX)

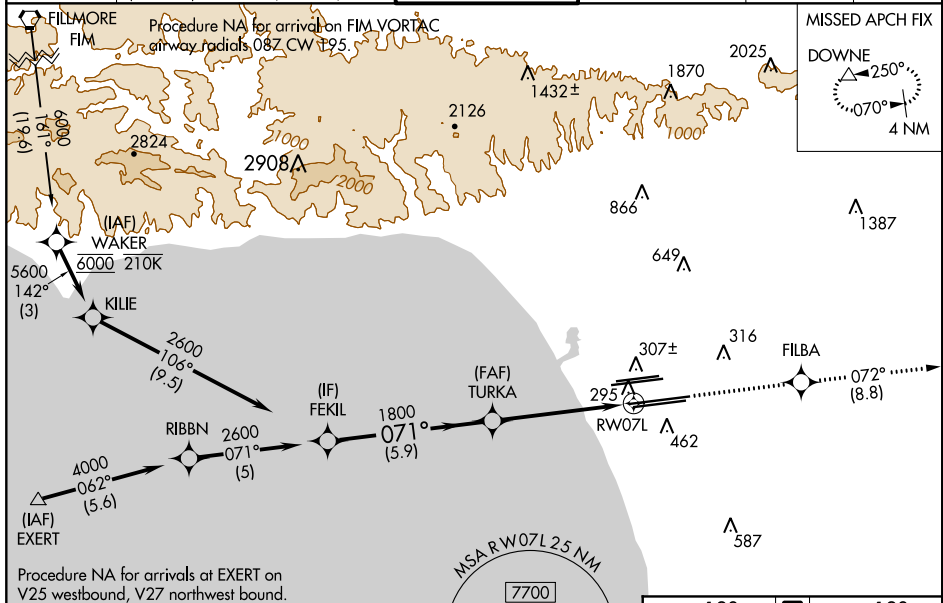
**▼** For uncompensated Baro-VNAV systems, LNAV/VNAV NA below 5°C (41°F) or above 54°C (130°F). DME/DME RNP -0.3 NA. LNAV procedure NA during simultaneous operations. Use of FD or AP providing RNAV track guidance required during simultaneous operations. Simultaneous approach authorized.

MALSR



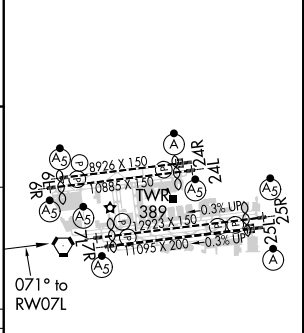
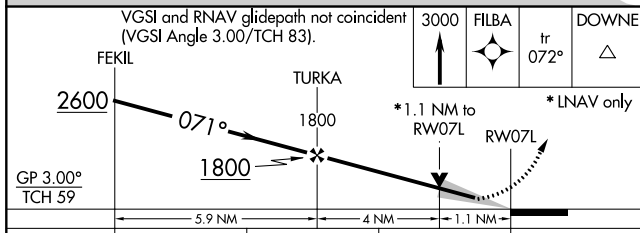
**MISSED APPROACH:** Climb to 3000 direct FILBA and on track 072° to DOWNE and hold.

D-ATIS ARR <b>133.8</b> DEP <b>135.65</b>	SOCAL APP CON <b>124.3 363.2</b> (APCH FM WEST) <b>124.5 235.975</b> (225°-044°)	<b>124.9 269.0</b> (090°-224°) <b>128.5 360.7</b> (045°-089°)	LOS ANGELES TOWER <b>N 133.9 239.3</b> <b>S 120.95 379.1</b>	GND CON <b>N 121.65 327.0</b> <b>S 121.75 327.0</b> <b>W 121.4 327.0</b>	CLNC DEL <b>120.35</b> <b>327.0</b>	CPDLC
---	--	--	--	---	---	-------



Procedure NA for arrivals at EXERT on V25 westbound, V27 northwest bound.

ELEV 128	<b>D</b> TDZE 128
----------	-------------------



CATEGORY	A	B	C	D
LPV DA		344/18	216 (300-½)	
LNAV/VNAV DA		464/30	336 (400-¾)	
LNAV MDA	560/24	432 (500-½)	560/40	432 (500-¾)

TDZ/CL Rwy's 6R, 7L, 24R, and 25L  
HIRL all Rwy's

SW-3, 31 DEC 2020 to 28 JAN 2021

SW-3, 31 DEC 2020 to 28 JAN 2021