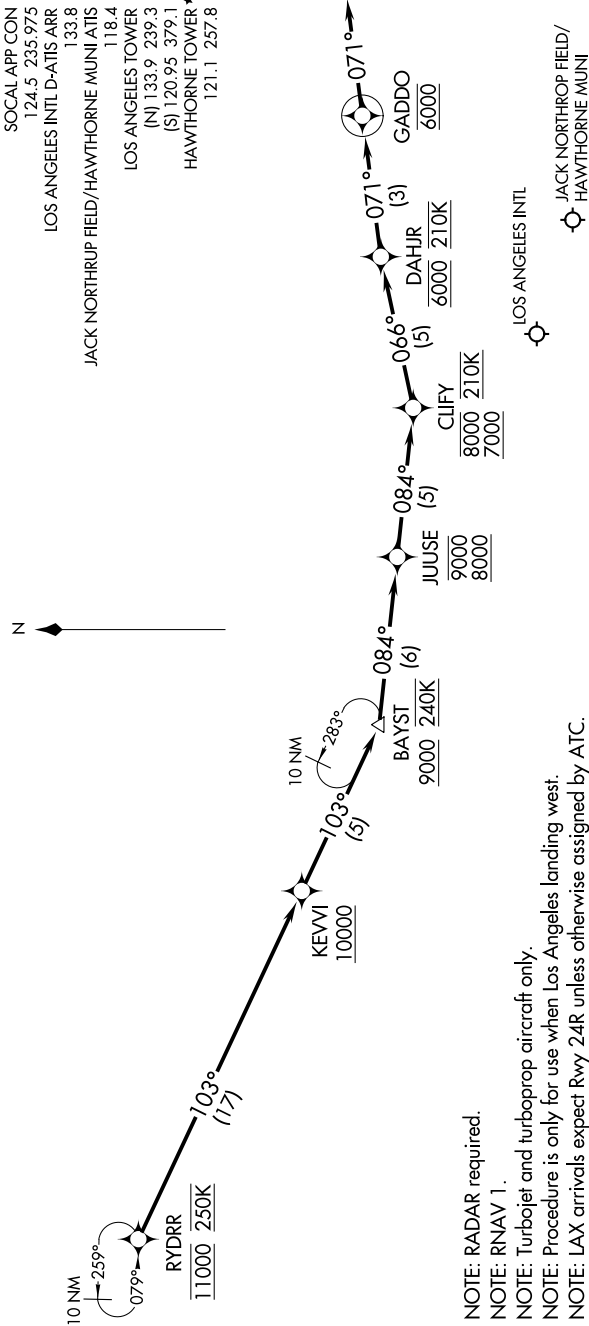


# RYDRR TWO ARRIVAL (RNAV) Arrival Routes

LOS ANGELES, CALIFORNIA

SW-3, 31 DEC 2020 to 28 JAN 2021



SOCAL APP CON  
124.5 235.975  
LOS ANGELES INTL D-ATIS ARR  
133.8  
JACK NORTHROP FLD/HAWTHORNE MUNI ATIS  
118.4  
LOS ANGELES TOWER  
(N) 133.9 239.3  
(S) 120.95 379.1  
HAWTHORNE TOWER \*  
121.1 257.8

NOTE: RADAR required.  
NOTE: RNAV 1.  
NOTE: Turbojet and turboprop aircraft only.  
NOTE: Procedure is only for use when Los Angeles landing west.  
NOTE: LAX arrivals expect Rwy 24R unless otherwise assigned by ATC.

NOTE: Chart not to scale.

## ARRIVAL ROUTE DESCRIPTION

LANDING KLAX/KHHR: From RYDRR on track 103° to cross KEVVI at or above 10000, then on track 103° to cross BAYST at or above 9000 and at 240K, then on track 084° to cross JUUSE between 8000 and 9000, then on track 084° to cross CLIFY between 7000 and 8000 and at 210K, then on track 066° to cross DAHJR at 6000 and at 210K, then on track 071° to cross GADDO at 6000, then on track 071°. Expect RADAR vectors to final approach course.

## LOST COMMUNICATIONS

In the event of lost communications: RNP LAX arrivals proceed on the RNAV (RNP) Z RWY 24R approach at DAHJR or proceed on the ILS or LOC RWY 24R.

# RYDRR TWO ARRIVAL (RNAV) Arrival Routes

LOS ANGELES, CALIFORNIA

SW-3, 31 DEC 2020 to 28 JAN 2021