

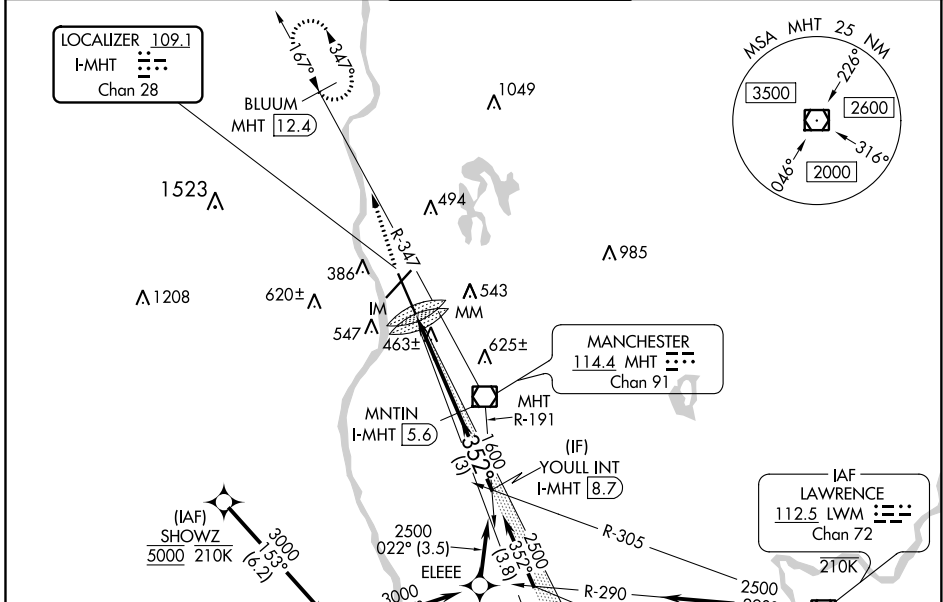
LOC/DME I-MHT <b>109.1</b> Chan 28	APP CRS <b>352°</b>	Rwy Idg 7650	TDZE 265
		Apt Elev 266	

# ILS RWY 35 (CAT II & III)

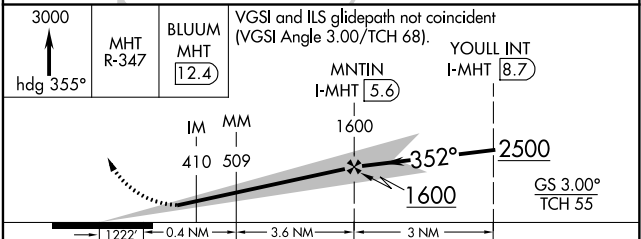
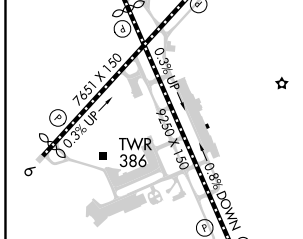
MANCHESTER (MHT)

From SHOWZ: RNAV 1-DME/DME/IRU or GPS required for procedure entry. DME required.	ALSF-2	MISSED APPROACH: Climb to 3000 on heading 355° and MHT VOR/DME R-347 to BLUUM/MHT 12.4 DME and hold, continue climb-in-hold to 3000.
--	--------	--

ATIS <b>119.55</b>	BOSTON APP CON <b>124.9 269.075</b>	MANCHESTER TOWER <b>121.3 239.025</b>	GND CON <b>121.9</b>	CLNC DEL <b>135.9</b>
-----------------------	--	--	-------------------------	--------------------------



ELEV 266	<b>D</b>	TDZE 265
----------	----------	----------



CATEGORY	A	B	C	D
S-ILS 35	CAT II RA 101/12 100 DA 365			
S-ILS 35	CAT III RVR 07			

**CATEGORY II & III ILS - SPECIAL AIRCREW & AIRCRAFT CERTIFICATION REQUIRED**

REIL Rws 6 and 24  
TDZ/CL Rwy 17 and 35  
HIRL Rws 6-24 and 17-35

NE-1, 31 DEC 2020 to 28 JAN 2021

NE-1, 31 DEC 2020 to 28 JAN 2021