

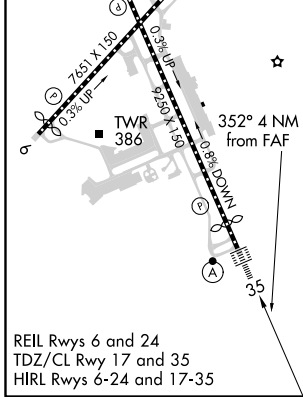
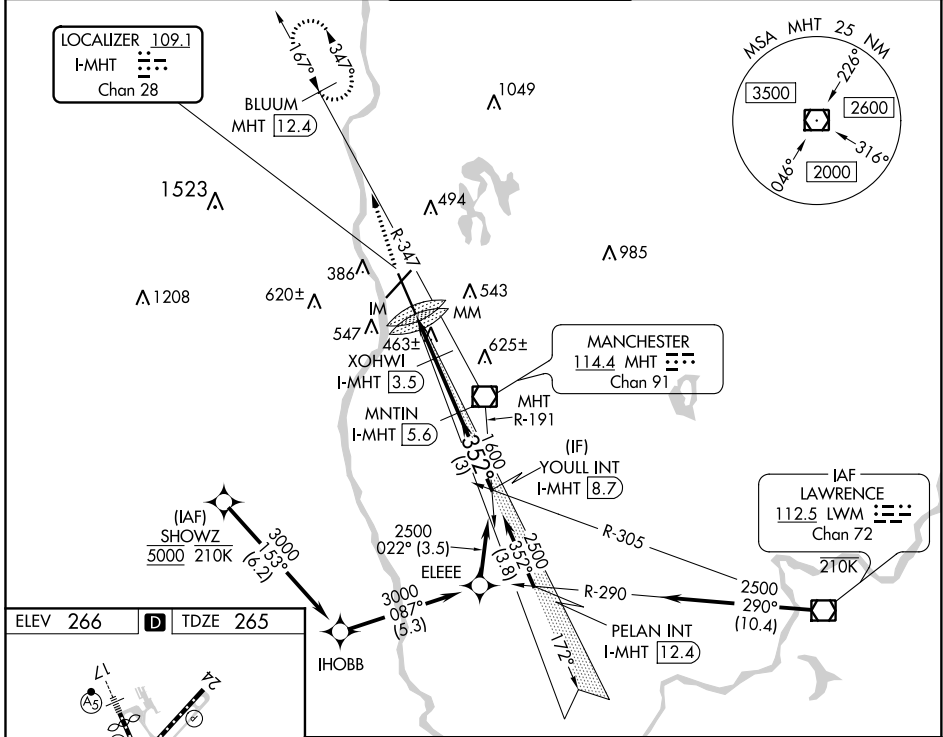
LOC/DME I-MHT 109.1 Chan 28	APP CRS 352°	Rwy Idg 7650 TDZE 265 Apt Elev 266
--	------------------------	---

ILS or LOC RWY 35

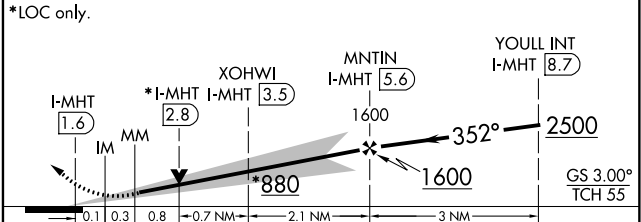
MANCHESTER (MHT)

From SHOWZ: RNAV 1-DME/DME/IRU or GPS required for procedure entry. DME required.	ALSF-2	MISSED APPROACH: Climb to 3000 on heading 355° and MHT VOR/DME R-347 to BLUUM/MHT 12.4 DME and hold, continue climb-in-hold to 3000.
<p>▼ Rwy 35 helicopter visibility reduction below RVR 4000 NA.</p> <p>▲ For inop ALS, increase S-LOC 35 Cats A/B visibility to RVR 5500.</p>		

ATIS 119.55	BOSTON APP CON 124.9 269.075	MANCHESTER TOWER 121.3 239.025	GND CON 121.9	CLNC DEL 135.9
-----------------------	--	--	-------------------------	--------------------------



ELEV 266	D	TDZE 265	<p>3000 hdg 355°</p> <p>MHT R-347</p> <p>BLUUM MHT 12.4</p> <p>VGSI and ILS glidepath not coincident (VGSI Angle 3.00/TCH 68). Use I-MHT localizer DME when on LOC course.</p>
----------	----------	----------	--



CATEGORY	A	B	C	D
S-ILS 35	465/18 200 (200-1/2)			
S-LOC 35	720/40	455 (500-3/4)	720/45	455 (500-7/8)

NE-1, 31 DEC 2020 to 28 JAN 2021

NE-1, 31 DEC 2020 to 28 JAN 2021