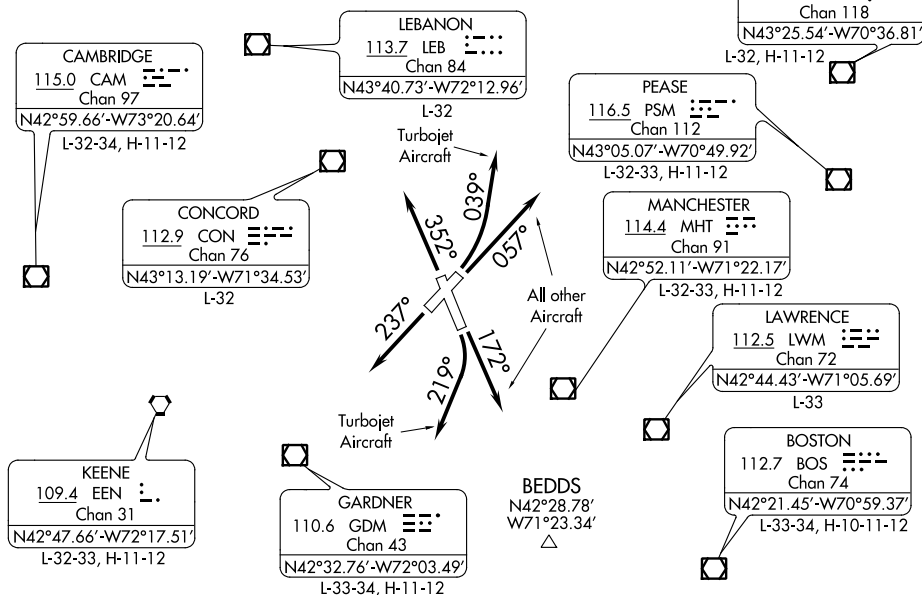


# MANCHESTER NINE DEPARTURE

**TOP ALTITUDE:  
3000**

ATIS 119.55  
CLNC DEL  
135.9  
GND CON  
121.9  
MANCHESTER TOWER  
121.3 239.025  
BOSTON DEP CON  
124.9 269.075

NOTE: RADAR required.



**TAKEOFF MINIMUMS:**

- Rwy 6: Standard with minimum climb of 206' per NM to 1000, or alternatively, with Standard takeoff minimums and a normal 200' per NM climb gradient, takeoff must occur no later than 1900' prior to DER.
- Rwy 17: 300-1¼ or Standard with minimum climb of 277' per NM to 600.
- Rwy 24: Standard with minimum climb of 321' per NM to 1200.
- Rwy 35: Standard with minimum climb of 253' per NM to 2000.

NOTE: Chart not to scale.

**DEPARTURE ROUTE DESCRIPTION**

- TAKEOFF RUNWAY 6:** TURBOJET AIRCRAFT - Climbing left turn heading 039°, thence . . . . ALL OTHER AIRCRAFT - Climb heading 057° or as assigned by ATC, thence . . . .
  - TAKEOFF RUNWAY 17:** TURBOJET AIRCRAFT - Climbing right turn heading 219°, thence . . . . ALL OTHER AIRCRAFT - Climb heading 172° or as assigned by ATC, thence . . . .
  - TAKEOFF RUNWAY 24:** Climb heading 237° or as assigned by ATC, thence . . . .
  - TAKEOFF RUNWAY 35:** Climb heading 352° or as assigned by ATC, thence . . . .
- . . . . expect vectors to assigned Route/Navaid/Fix. Maintain 3000 or as assigned by ATC. Expect clearance to filed altitude/flight level within five (5) minutes after departure.

# MANCHESTER NINE DEPARTURE

NE-1, 31 DEC 2020 to 28 JAN 2021

NE-1, 31 DEC 2020 to 28 JAN 2021