

WAAS CH 93807 W17A	APP CRS 171°	Rwy Idg 8914 TDZE 229 Apt Elev 266
--	------------------------	---

RNAV (GPS) Y RWY 17

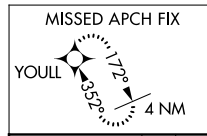
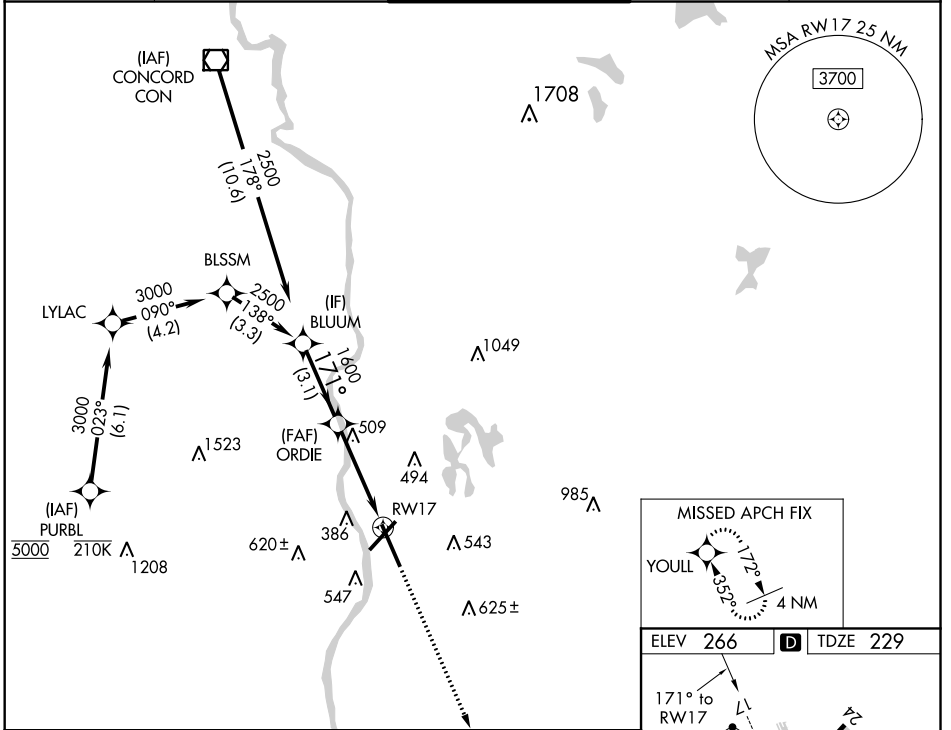
MANCHESTER (MHT)

⚠ For uncompensated Baro-VNAV systems, LNAV/VNAV NA below -20°C (-4°F) or above 48°C (118°F). DME/DME RNP-0.3 NA. When local altimeter setting not received, use Nashua altimeter setting: increase LPV DA to 461; increase LNAV/VNAV DA to 761; increase all MDA 40 feet and LNAV Cat C/D visibility 1/8 mile and Circling Cat C visibility 1/4 mile. VDP and Baro-VNAV NA when using Nashua altimeter setting.

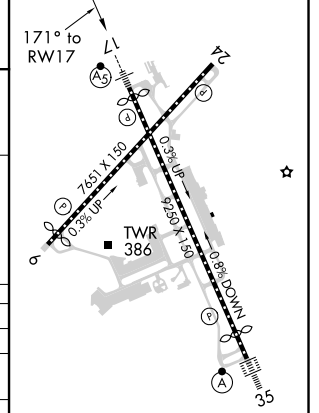
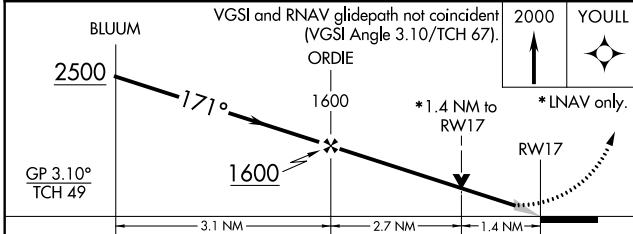
MALSR

MISSED APPROACH:
 Climb to 2000 direct YOULL and hold.

ATIS 119.55	BOSTON APP CON 124.9 269.075	MANCHESTER TOWER 121.3 239.025	GND CON 121.9	CLNC DEL 135.9
-----------------------	--	--	-------------------------	--------------------------



ELEV 266	D TDZE 229
----------	-------------------



CATEGORY	A	B	C	D
LPV DA		429/18	200 (200-1/2)	
LNAV/VNAV DA		729/60	500 (500-1 1/4)	
LNAV MDA	760/24	531 (500-1/2)	760/60	531 (500-1 1/4)
C CIRCLING	880-1	614 (700-1)	980-2 714 (800-2)	1100-2 3/4 834 (900-2 1/4)

REIL Rwy 6 and 24
 TDZ/CL Rwy 17 and 35
 HIRL Rwy 6-24 and 17-35

NE-1, 31 DEC 2020 to 28 JAN 2021

NE-1, 31 DEC 2020 to 28 JAN 2021