

LOC I-OPF <b>110.5</b>	APP CRS <b>093°</b>	Rwy Idg <b>8002</b>
		TDZE <b>8</b>
		Apt Elev <b>8</b>

# ILS or LOC RWY 9L

MIAMI-OPA LOCKA EXECUTIVE (OPF)

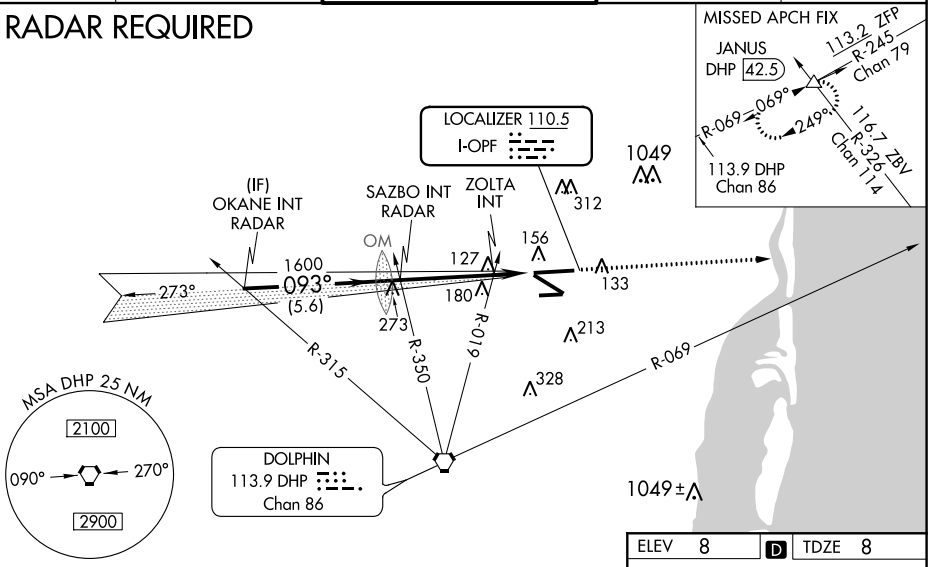
**⚠ Inoperative table does not apply. Helicopter visibility reduction below 3/4 SM NA.**  
**⚠ Caution:** Lights on highway 0.7 NM north may be mistaken for runway. When local altimeter setting not received, use Miami Intl altimeter setting and increase all DA/MDA 20 feet. For inoperative MALSR, increase S-LOC 9L Cats A and B visibility to 1 mile and Cats C and D visibility to 1 3/8 miles. ZOLTA Fix minimums, for inoperative MALSR, increase S-LOC 9L all Cats visibility to 1 mile. ZOLTA Fix minimums, for inoperative MALSR, when using Miami Intl altimeter setting, increase Cats A and B visibility to 1 mile and Cats C and D visibility to 1 1/8 miles. For inoperative MALSR, when using Miami Intl altimeter setting, increase S-ILS 9L all Cats visibility to 7/8 mile.

**MALSR**

**MISSED APPROACH:** Climb to 2000 heading 093° and DHP VORTAC R-069 to JANUS INT/DHP 42.5 DME and hold.

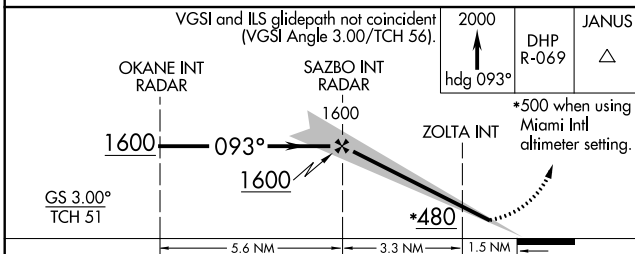
ATIS <b>125.9</b>	MIAMI APP CON <b>128.6 306.975</b>	OPA LOCKA TOWER ★ <b>134.675 (CTAF) 0</b>	GND CON <b>120.025</b>	CLNC DEL <b>119.2</b>
----------------------	---------------------------------------	--	---------------------------	--------------------------

## RADAR REQUIRED



SE-3, 31 DEC 2020 to 28 JAN 2021

SE-3, 31 DEC 2020 to 28 JAN 2021



ELEV 8	TDZE 8
--------	--------

093° 4.8 NM from FAF

8002 X 150

TWR 206

4309 X 100

MRL Rwy 9R-27L  
HIRL Rwy 9L-27R and 12-30

FAF to MAP 4.8 NM

Knots	60	90	120	150	180
Min:Sec	4:48	3:12	2:24	1:55	1:36

CATEGORY	A	B	C	D
S-ILS 9L		258-3/4	250 (300-3/4)	
S-LOC 9L	480-3/4	472 (500-3/4)	480-1	472 (500-1)
CIRCLING	540-1	532 (600-1)	540-1 1/2 532 (600-1 1/2)	560-2 552 (600-2)
ZOLTA FIX MINIMUMS				
S-LOC 9L		380-3/4	372 (400-3/4)	
CIRCLING	540-1	532 (600-1)	540-1 1/2 532 (600-1 1/2)	560-2 552 (600-2)