


|  |                        |                             |                                     |
|--|------------------------|-----------------------------|-------------------------------------|
| WAAS<br>CH <b>69522</b><br><b>W12A</b> | APP CRS<br><b>128°</b> | Rwy Idg<br>TDZE<br>Apt Elev | <b>6000</b><br><b>8</b><br><b>8</b> |
|--|------------------------|-----------------------------|-------------------------------------|

# RNAV (GPS) RWY 12

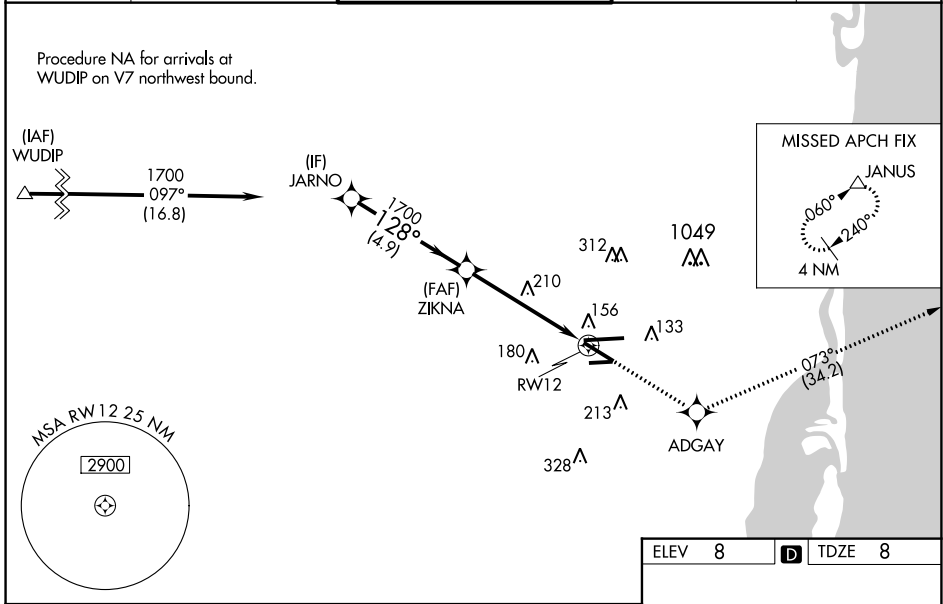
MIAMI-OPA LOCKA EXECUTIVE (OPF)

**⚠** Baro-VNAV NA when using Miami Intl altimeter setting. For uncompensated Baro-VNAV systems, LNAV/VNAV NA below -15°C (5°F) or above 43°C (109°F). Helicopter visibility reduction below 3/4 SM NA. DME/DME RNP-0.3 NA. VDP NA with Miami Intl altimeter setting. When local altimeter setting not received, use Miami Intl altimeter setting and increase all DA/MDA 20 feet. Inoperative table does not apply. For inoperative MALSR, increase LNAV/VNAV all Cats visibility and LNAV Cats A and B to 1 mile and LNAV Cats C and D visibility to 1 1/2 miles. For inoperative MALSR, when using Miami Intl altimeter setting, increase LNAV/VNAV all Cats visibility and LNAV Cats A and B visibility to 1 mile.

**MALSR** 

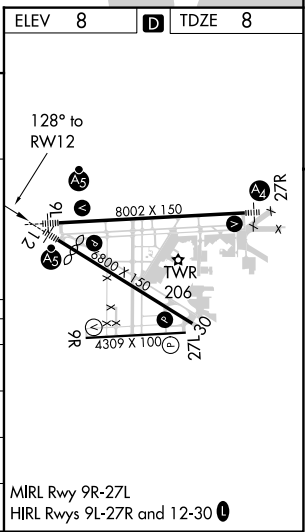
**MISSED APPROACH:** Climb to 2000 direct ADGAY and on track 073° to JANUS and hold.

|                      |                                       |   |                           |                          |
|----------------------|---------------------------------------|---|---------------------------|--------------------------|
| ATIS<br><b>125.9</b> | MIAMI APP CON<br><b>128.6 306.975</b> | OPA LOCKA TOWER ★<br><b>134.675</b> (CTAF) <b>0</b> | GND CON<br><b>120.025</b> | CLNC DEL<br><b>119.2</b> |
|----------------------|---------------------------------------|---|---------------------------|--------------------------|



|              |                  |               |                 |             |
|--------------|------------------|---------------|-----------------|-------------|
|              | JARNO            | ZIKNA         | ADGAY           | JANUS       |
|              | 1700             | 1700          | 2000            | tr 073°     |
|              | GP 3.00° TCH 53  |               | *LNAV only.     |             |
|              | 4.9 NM           |               | 3.7 NM          |             |
|              | 128°             |               | 1700            |             |
|              | *1.5 NM to RWY12 |               | RWY 12          |             |
| CATEGORY     | A                | B             | C               | D           |
| LPV DA       |                  | 208-3/4       | 200 (200-3/4)   |             |
| LNAV/VNAV DA |                  | 320-3/4       | 312 (400-3/4)   |             |
| LNAV MDA     | 520-3/4          | 512 (600-3/4) | 520-1           | 512 (600-1) |
| CIRCLING     | 540-1            | 532 (600-1)   | 540-1 1/2       | 560-2       |
|              |                  |               | 532 (600-1 1/2) | 552 (600-2) |

|        |        |
|--------|--------|
| ELEV 8 | TDZE 8 |
|--------|--------|



MIRL Rwy 9R-27L  
HIRL Rwys 9L-27R and 12-30

SE-3, 31 DEC 2020 to 28 JAN 2021

SE-3, 31 DEC 2020 to 28 JAN 2021