

BANND TWO ARRIVAL (RNAV) Transition Routes

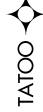
SW-2, 31 DEC 2020 to 28 JAN 2021

- OAKLAND CENTER  
134.37 281.5
- NORCAL APP.CON  
124.8 263.15
- D-ATIS  
133.775
- OAKLAND TOWER  
127.2 256.9 (Rwy 12)
- GND.CON  
121.75 (Rwy 12)

- MRLET TRANSITION (MRLET.BANND2)
- RPARK TRANSITION (RPARK.BANND2)
- RUSME TRANSITION (RUSME.BANND2)

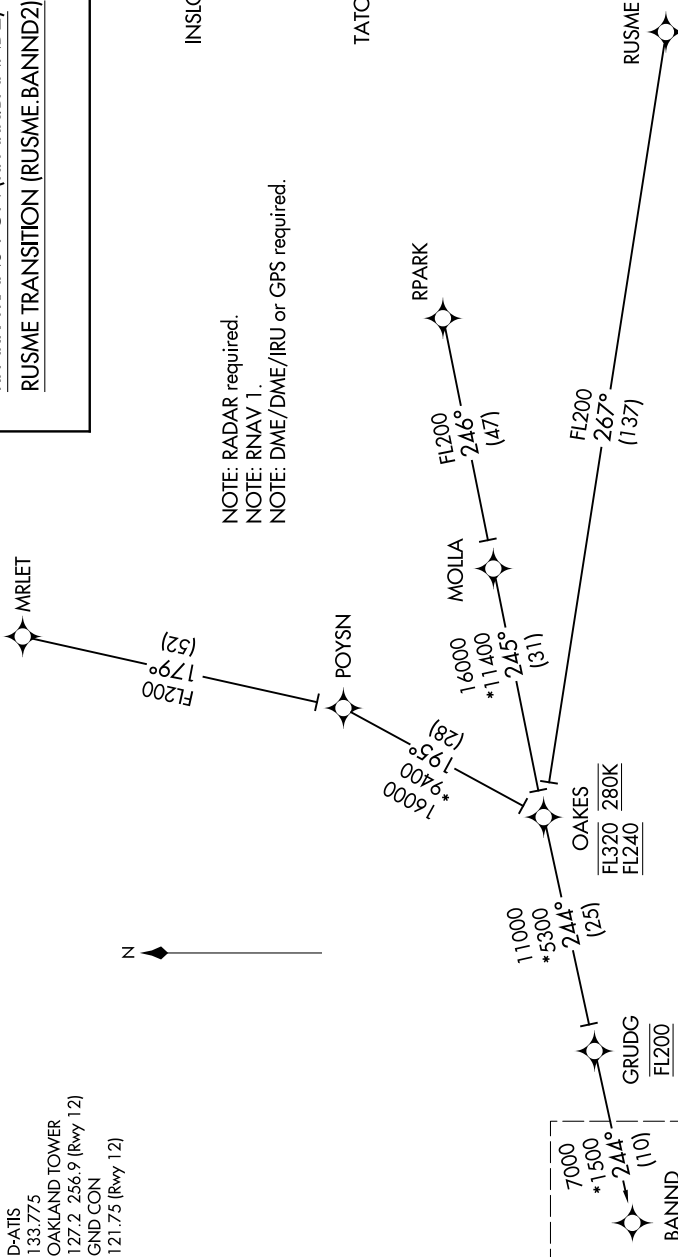


INSLO



TATOO

NOTE: RADAR required.  
 NOTE: RNAV 1.  
 NOTE: DME/DME/IRU or GPS required.



NOTE: Chart not to scale.

(CONTINUED ON FOLLOWING PAGE)

SW-2, 31 DEC 2020 to 28 JAN 2021

BANND TWO ARRIVAL (RNAV) Transition Routes