

(CNDEL4.CNDEL) 18256

# CNDEL FOUR DEPARTURE (RNAV)

METROPOLITAN OAKLAND INTL (OAK)  
OAKLAND, CALIFORNIA

AL-294 (FAA)

D-ATIS 133.775  
CLNC DEL  
121.1  
CPDLC  
GND CON  
121.9 (Rwys 28L/R)  
121.75 (Rwy 30)  
OAKLAND TOWER  
118.3 291.65 (Rwys 28L/R)  
127.2 256.9 (Rwy 30)  
NORCAL DEP CON  
135.1 307.2

**TOP ALTITUDE:  
10000**

## DEPARTURE ROUTE DESCRIPTION

**TAKEOFF RUNWAYS 28L, 28R:** Climb heading 278° to 520, then direct to cross LEJAY at or below 2000, then on track 296° to CNDEL, then left turn direct to cross PORTE at or below 10000. Thence. . . .

**TAKEOFF RUNWAY 30:** Climb heading 296° to 520, then direct to cross LEJAY at or below 2000, then on track 296° to CNDEL, then left turn direct to cross PORTE at or below 10000. Thence. . . .

. . . . on (transition). Maintain 10000, expect filed altitude 10 minutes after departure.

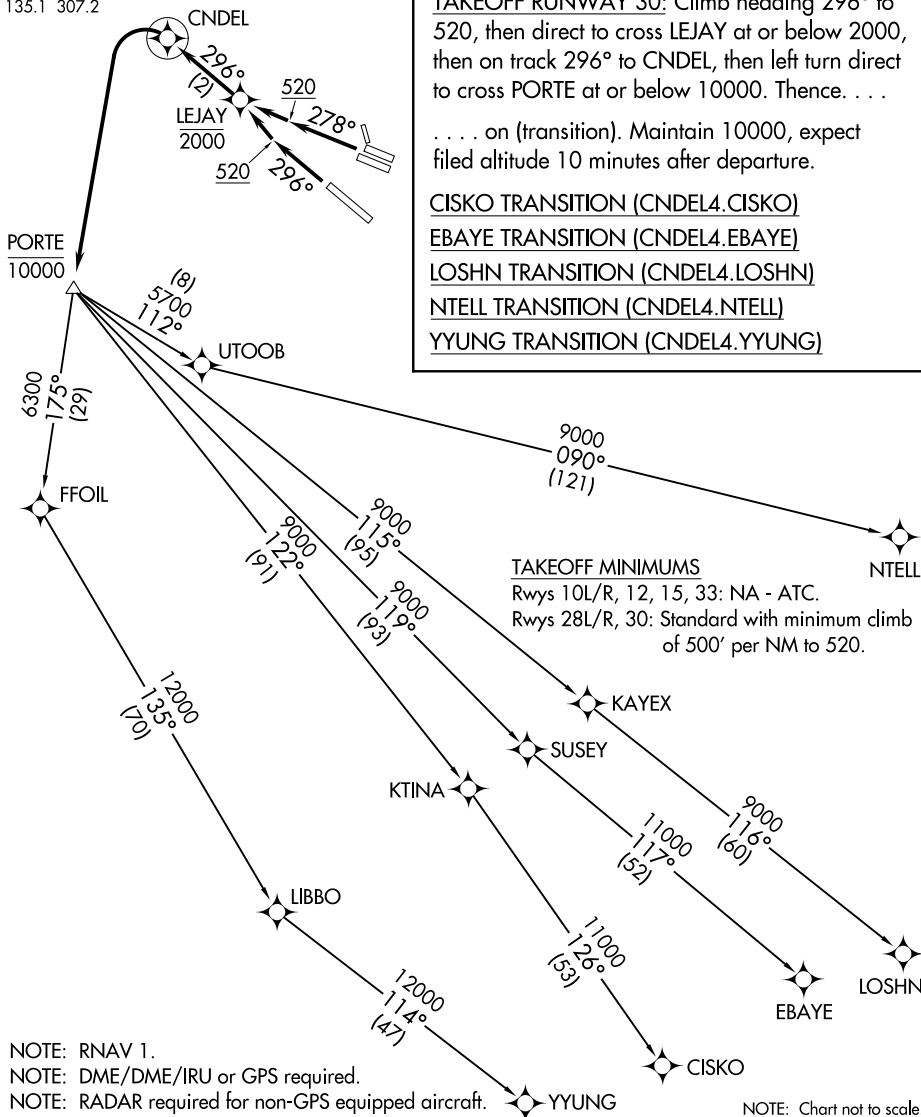
CISKO TRANSITION (CNDEL4.CISKO)

EBAYE TRANSITION (CNDEL4.EBAYE)

LOSHN TRANSITION (CNDEL4.LOSHN)

NTELL TRANSITION (CNDEL4.NTELL)

YYUNG TRANSITION (CNDEL4.YYUNG)



NOTE: RNAV 1.  
NOTE: DME/DME/IRU or GPS required.  
NOTE: RADAR required for non-GPS equipped aircraft.

NOTE: Chart not to scale.

# CNDEL FOUR DEPARTURE (RNAV)

(CNDEL4.CNDEL) 13SEP18

OAKLAND, CALIFORNIA  
METROPOLITAN OAKLAND INTL (OAK)

SW-2, 31 DEC 2020 to 28 JAN 2021

SW-2, 31 DEC 2020 to 28 JAN 2021