

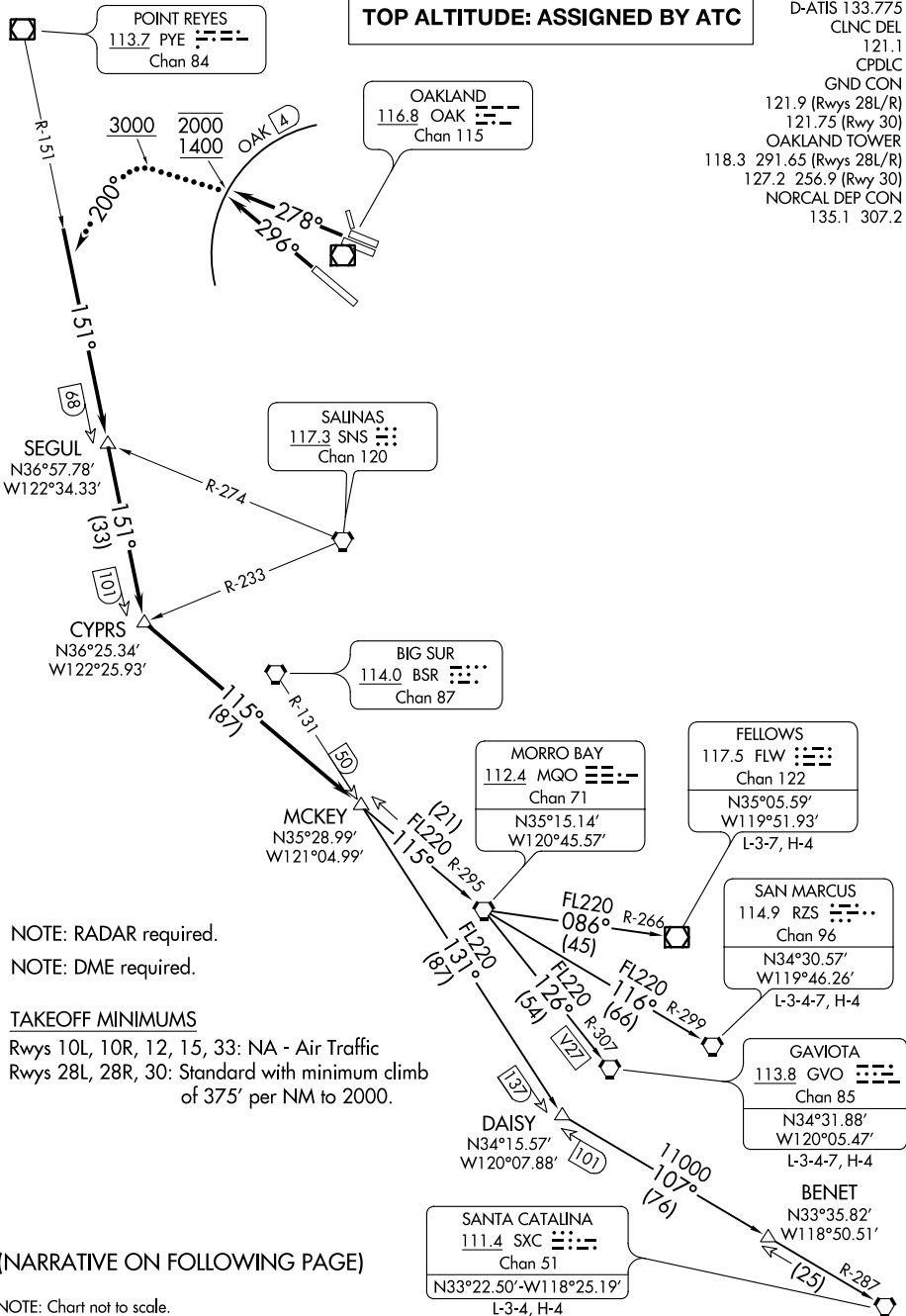
(COAST9.MCKEY) 19339
COAST NINE DEPARTURE

AL-294 (FAA)

METROPOLITAN OAKLAND INTL (OAK)
 OAKLAND, CALIFORNIA

TOP ALTITUDE: ASSIGNED BY ATC

D-ATIS 133.775
 CLNC DEL 121.1
 CPDLC
 GND CON
 121.9 (Rwys 28L/R)
 121.75 (Rwy 30)
 OAKLAND TOWER
 118.3 291.65 (Rwys 28L/R)
 127.2 256.9 (Rwy 30)
 NORCAL DEP CON
 135.1 307.2



NOTE: RADAR required.

NOTE: DME required.

TAKEOFF MINIMUMS

Rwys 10L, 10R, 12, 15, 33: NA - Air Traffic
 Rwys 28L, 28R, 30: Standard with minimum climb
 of 375' per NM to 2000.

(NARRATIVE ON FOLLOWING PAGE)

NOTE: Chart not to scale.

COAST NINE DEPARTURE
 (COAST9.MCKEY) 01FEB18

OAKLAND, CALIFORNIA
 METROPOLITAN OAKLAND INTL (OAK)

SW-2, 31 DEC 2020 to 28 JAN 2021

SW-2, 31 DEC 2020 to 28 JAN 2021