

LOC I-AAZ <b>111.9</b>	APP CRS <b>116°</b>	Rwy Idg TDZE Apt Elev	<b>10000</b> <b>9</b> <b>9</b>
---------------------------	------------------------	-----------------------------	--------------------------------------

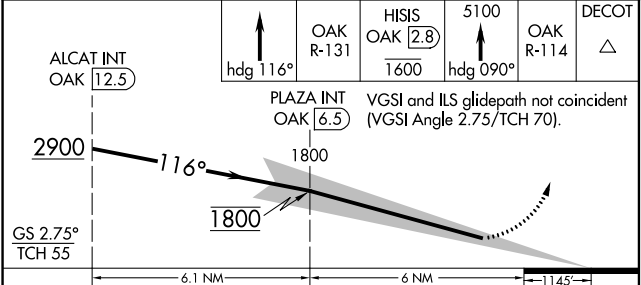
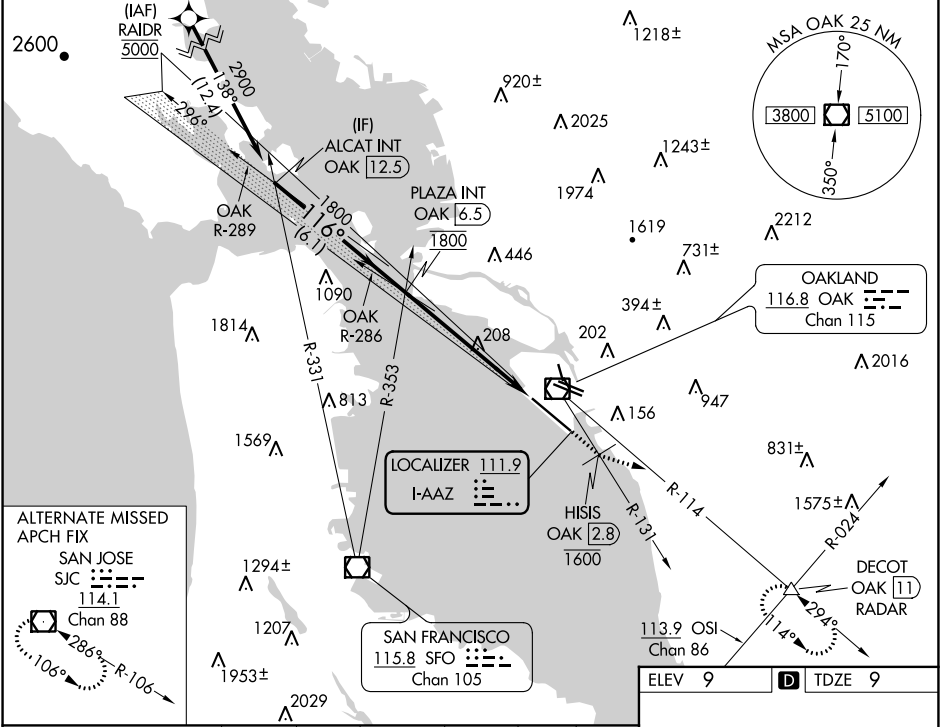
# ILS RWY 12 (SA CAT I)

## METROPOLITAN OAKLAND INTL (OAK)

DME required. From RA1DR: RNAV 1-GPS required. MALSR MISSED APPROACH: Climb on heading 116° and on OAK VOR/DME R-131 to cross HISIS/OAK 2.8 DME at or below 1600 then climb to 5100 on heading 090° and on OAK VOR/DME R-114 to DECOT INT/OAK 11 DME/RADAR and hold, continue climb-in-hold to 5100.

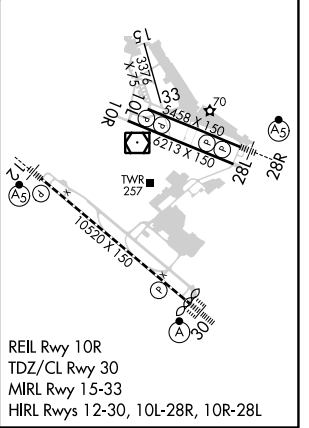
Requires specific OPSPEC, MSPEC, or LOA approval and use of HUD to DH.

D-ATIS <b>133.775</b>	NORCAL APP CON <b>125.35 263.15</b>	OAKLAND TOWER <b>118.3 291.65</b> (Rwys 10L/R-28L/R, 15-33) <b>127.2 256.9</b> (Rwy 12-30)	GND CON <b>121.9</b> (Rwys 10L/R-28L/R, 15-33) <b>121.75</b> (Rwy 12-30)	CLNC DEL <b>121.1</b>	CPDLC
--------------------------	--	--	--	--------------------------	-------



CATEGORY	A	B	C	D
S-ILS 12	RA 153/14 150 DA 159			

ELEV 9	TDZE 9
--------	--------



**SA CATEGORY I ILS - SPECIAL AIRCREW & AIRCRAFT CERTIFICATION REQUIRED**

REIL Rwy 10R  
TDZ/CL Rwy 30  
MIRL Rwy 15-33  
HIRL Rwys 12-30, 10L-28R, 10R-28L

SW-2, 31 DEC 2020 to 28 JAN 2021

SW-2, 31 DEC 2020 to 28 JAN 2021