

LOC I-OAK <b>109.9</b>	APP CRS <b>278°</b>	Rwy Idg TDZE Apt Elev	28R <b>5458</b> 7 9	28L <b>6213</b> 9 9
---------------------------	------------------------	-----------------------------	------------------------------	------------------------------

# ILS or LOC/DME RWY 28R

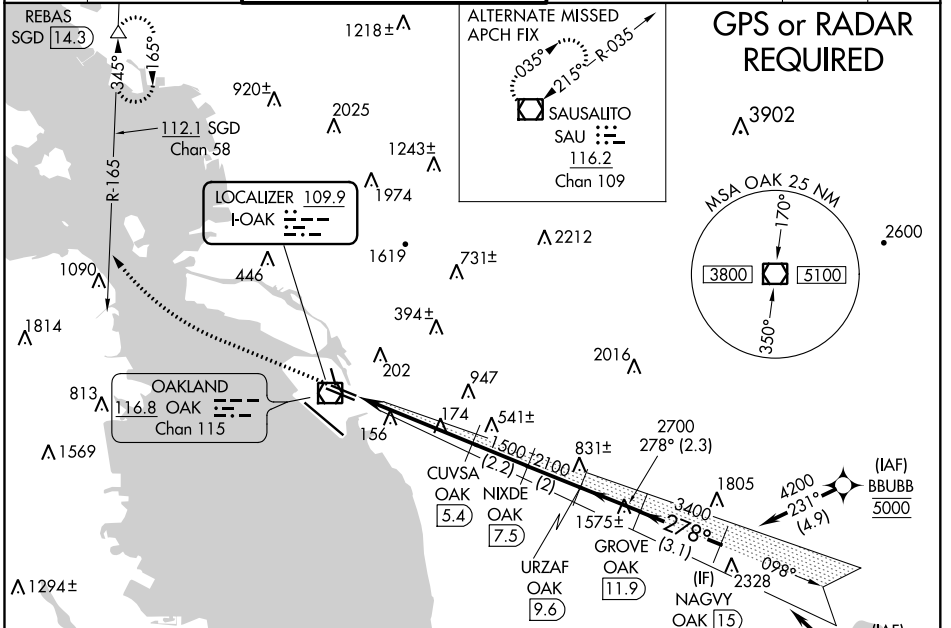
## METROPOLITAN OAKLAND INTL (OAK)

**⚠** DME required. DME from OAK VOR/DME. Simultaneous reception of I-OAK and OAK DME required.  
**\*RVR 1800 authorized with use of FD or AP or HUD to DA.**

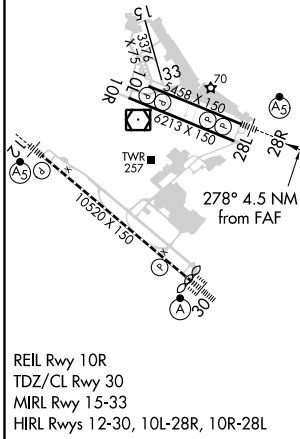
**MALS** Rwy 28R

**MISSED APPROACH:** Climb to 1900 then climbing right turn to 3000 on heading 340° and SGD VORTAC R-165 to REBAS/SGD 14.3 DME and hold.

D-ATIS <b>133.775</b>	NORCAL APP CON <b>125.35 263.15</b>	OAKLAND TOWER <b>118.3 291.65</b> (Rwys 10L/R-28L/R, 15-33) <b>127.2 256.9</b> (Rwy 12-30)	GND CON <b>121.9</b> (Rwys 10L/R-28L/R, 15-33) <b>121.75</b> (Rwy 12-30)	CLNC DEL <b>121.1</b>	CPDLC
--------------------------	--	--	--	--------------------------	-------



ELEV 9	<b>D</b>	TDZE 28R 7	TDZE 28L 9
--------	----------	------------	------------



	1900	3000	SGD R-165	REBAS	GROVE OAK 11.9	NAGVY OAK 15
					URZAF OAK 9.6	
					NIXDE OAK 7.5	
					CUVSA OAK 5.4	
					OAK 0.9	
CATEGORY	A	B	C	D		
*S-ILS 28R		207/24	200 (200-½)			
S-LOC 28R		440/24	433 (500-½)			
SIDESTEP 28L	440/55	431 (500-1)	440-1½	431 (500-1½)		
<b>C</b> CIRCLING	560-1	551 (600-1)	660-1¾ 651 (700-1¾)	1400-3 1391 (1400-3)		

SW-2, 31 DEC 2020 to 28 JAN 2021

SW-2, 31 DEC 2020 to 28 JAN 2021