

(KATFH2.KATFH) 17285

KATFH TWO DEPARTURE (RNAV)

AL-294 (FAA)

METROPOLITAN OAKLAND INTL (OAK)
OAKLAND, CALIFORNIA

D-ATIS 133.775
CLNC DEL
121.1
CPDLC
GND CON
121.9 (Rwys 10L/R)
121.75 (Rwy 12)
OAKLAND TOWER
118.3 291.65 (Rwys 10L/R)
127.2 256.9 (Rwy 12)
NORCAL DEP CON
135.1 307.2

**TOP ALTITUDE:
3000**



DEPARTURE ROUTE DESCRIPTION

TAKEOFF RUNWAYS 10L, 10R: Climb heading 098° to 520, then right turn direct to cross ROWLY at/below 3000, then on track 150° to cross VYYDA at/below 4000, then on track 150° to cross KATFH at/above 6000. Thence. . . .

TAKEOFF RUNWAY 12: Climb heading 116° to 520, then direct to cross ROWLY at/below 3000, then on track 150° to cross VYYDA at/below 4000, then on track 150° to cross KATFH at/above 6000. Thence. . . .

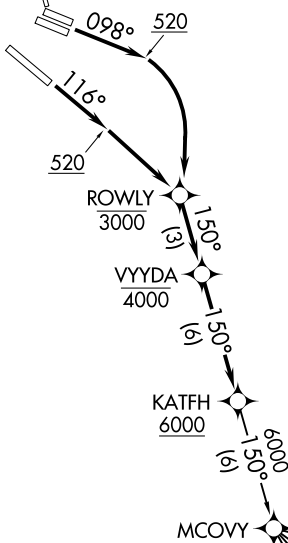
. . . .on (transition). Expect filed altitude 10 minutes after departure.

CISKO TRANSITION (KATFH2.CISKO)

EBAYE TRANSITION (KATFH2.EBAYE)

LOSHN TRANSITION (KATFH2.LOSHN)

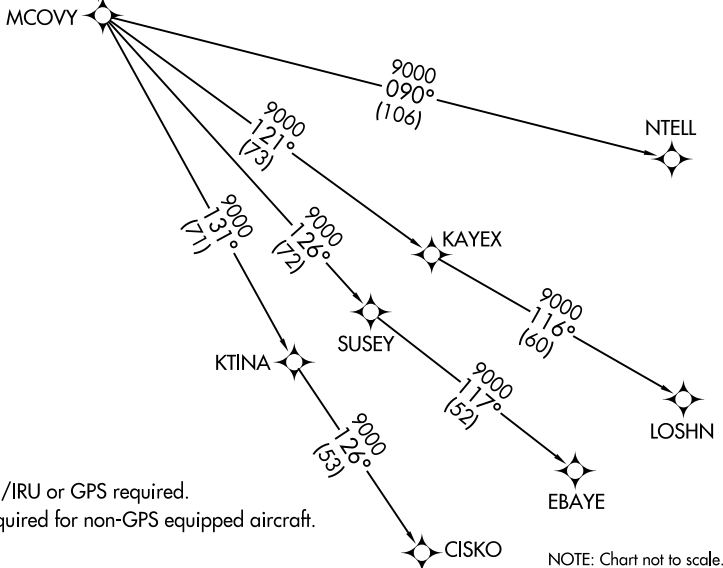
NTELL TRANSITION (KATFH2.NTELL)



TAKEOFF MINIMUMS

Rwys 15, 28L/R, 30, 33: NA-ATC.

Rwys 10L/R, 12: Standard with minimum climb of 500' per NM to 520.



NOTE: RNAV 1.
NOTE: DME/DME/IRU or GPS required.
NOTE: RADAR required for non-GPS equipped aircraft.

NOTE: Chart not to scale.

KATFH TWO DEPARTURE (RNAV)

(KATFH2.KATFH) 20AUG15

OAKLAND, CALIFORNIA
METROPOLITAN OAKLAND INTL (OAK)

SW-2, 31 DEC 2020 to 28 JAN 2021

SW-2, 31 DEC 2020 to 28 JAN 2021