

OAKES TWO ARRIVAL (RNAV) Arrival Routes

SW-2, 31 DEC 2020 to 28 JAN 2021

ARRIVAL ROUTE DESCRIPTION

From OAKES on track 244° to cross GRUDG between FL200 and FL230 and at 280K, then on track 244° to cross BANND at or below FL190.

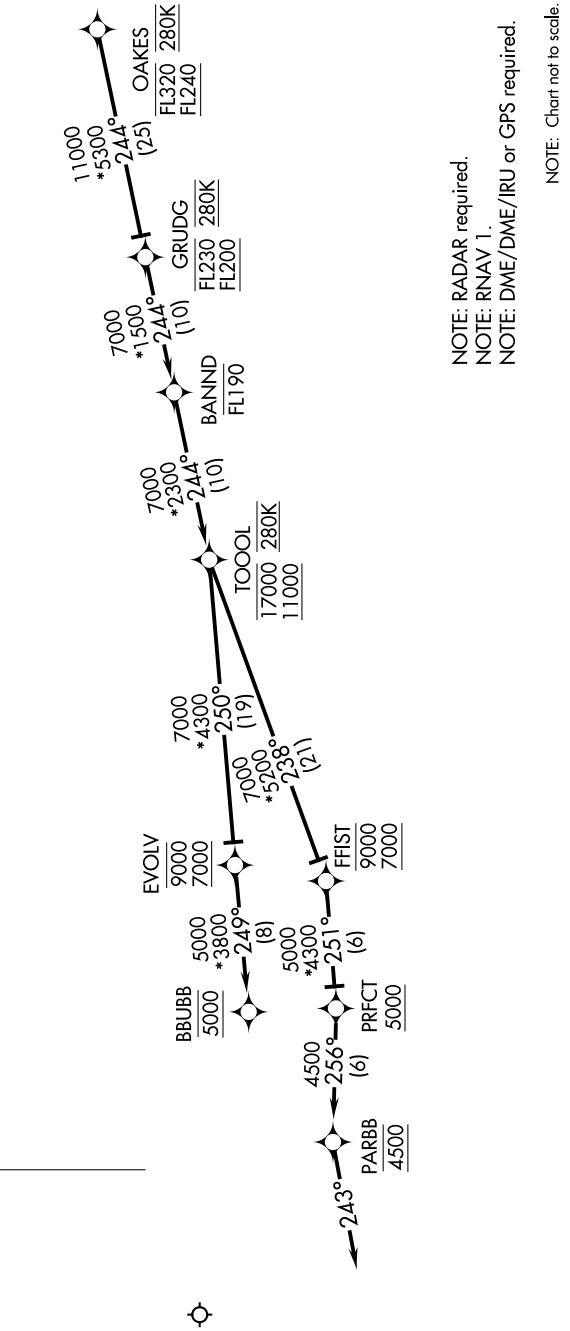
LANDING RUNWAYS 28L/R: From BANND on track 244° to cross TOOOL between 11000 and 17000 and at 280K, then on track 250° to cross EVOLV between 7000 and 9000, then on track 249° to cross BBUBB at 5000. Expect assigned instrument approach procedure.

LANDING RUNWAY 30: From BANND on track 244° to cross TOOOL between 11000 and 17000 and at 280K, then on track 238° to cross FFIST between 7000 and 9000, then on track 251° to cross PRFCT at or above 5000, then on track 256° to cross PARBB at 4500, then on track 243°. Expect assigned instrument approach procedure.

- OAKLAND CENTER
134.37 281.5
- NORCAL APP CON
124.8 263.15
- D-ATIS
133.775
- OAKLAND TOWER
118.3 291.65 (Rwys 28L/R)
127.2 256.9 (Rwy 30)
- GND CON
121.9 (Rwys 28L/R)
121.75 (Rwy 30)



OAKES TWO ARRIVAL (RNAV) Arrival Routes



NOTE: RADAR required.
NOTE: RNAV 1.
NOTE: DME/DME/IRU or GPS required.

NOTE: Chart not to scale.

SW-2, 31 DEC 2020 to 28 JAN 2021