

APP CRS	Rwy Idg	<b>6213</b>
<b>111°</b>	TDZE	<b>9</b>
	Apt Elev	<b>9</b>

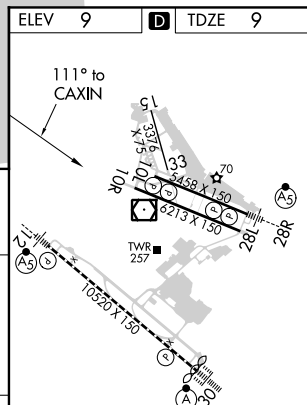
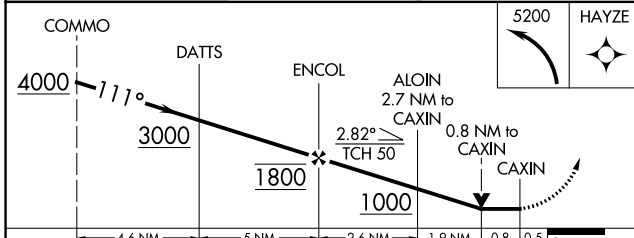
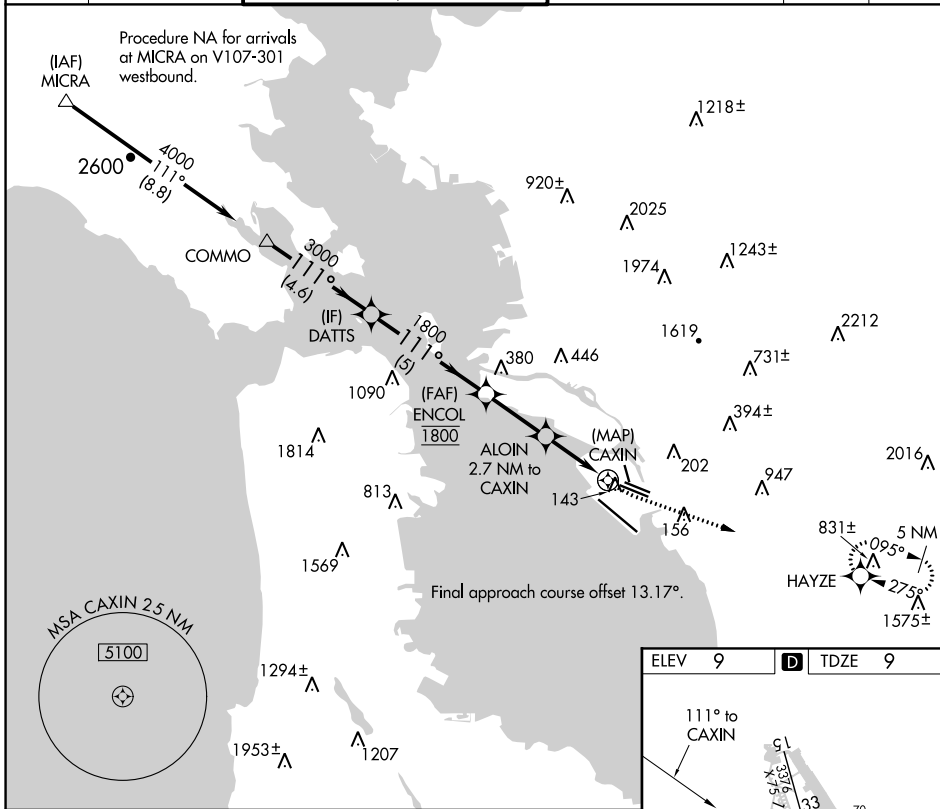
# RNAV (GPS) RWY 10R

## METROPOLITAN OAKLAND INTL (OAK)

**▽** DME/DME RNP-0.3 NA.  
**▲** Helicopter visibility reduction below 3/4 SM not authorized.

MISSED APPROACH: Climbing left turn to 5200 direct HAYZE and hold, continue climb-in-hold to 5200.

D-ATIS	NORCAL APP CON	OAKLAND TOWER	GND CON	CLNC DEL	CPDLC
<b>133.775</b>	<b>125.35 263.15</b>	<b>118.3 291.65</b> (Rwys 10L/R-28L/R, 15-33) <b>127.2 256.9</b> (Rwy 12-30)	<b>121.9</b> (Rwys 10L/R-28L/R, 15-33) <b>121.75</b> (Rwy 12-30)	<b>121.1</b>	



CATEGORY	A	B	C	D
LNVA MDA	480-1 471 (500-1)		480-1 3/8 471 (500-1 3/8)	
<b>C</b> CIRCLING	560-1 551 (600-1)		660-1 3/4 651 (700-1 3/4)	1380-3 1371 (1400-3)

REIL Rwy 10R  
 TDZ/CL Rwy 30  
 MIRL Rwy 15-33  
 HIRL Rwys 12-30, 10L-28R, 10R-28L

SW-2, 31 DEC 2020 to 28 JAN 2021

SW-2, 31 DEC 2020 to 28 JAN 2021