

| | | |
|-------------|----------|--------------|
| APP CRS | Rwy Idg | 10000 |
| 296° | TDZE | 9 |
| | Apt Elev | 9 |

RNAV (RNP) Z RWY 30

METROPOLITAN OAKLAND INTL (OAK)

GPS required. For uncompensated Baro-VNAV systems, procedure NA below 1°C (34°F) or above 54°C (130°F). For inop ALS increase RNP 0.11 visibility all Cats to RVR 4000.

OAKLAND TOWER
118.3 291.65 (Rwys 10L/R-28L/R, 15-33)
127.2 256.9 (Rwy 12-30)

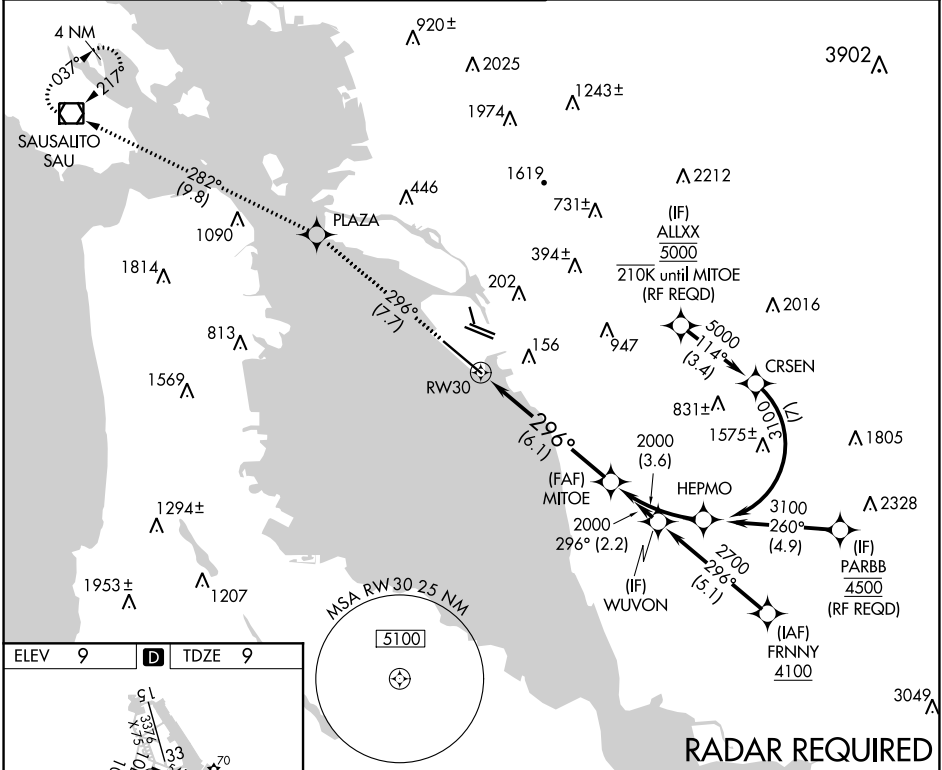
ALSf-2

MISSED APPROACH: Climb to 4000 on track 296° to PLAZA and on track 282° to SAU VOR/DME and hold, continue climb-in-hold to 4000.

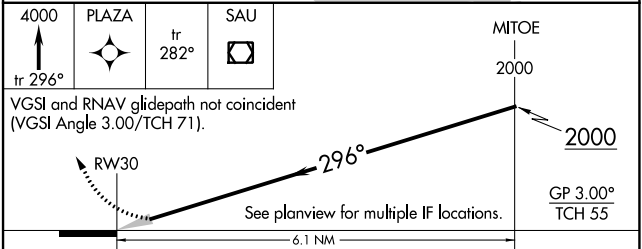
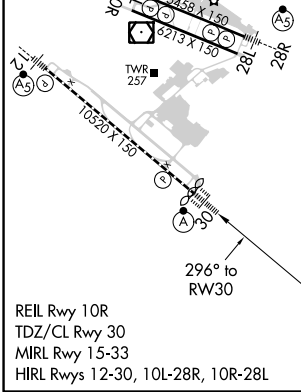
GND CON
121.9 (Rwys 10L/R-28L/R, 15-33)
121.75 (Rwy 12-30)

CLNC DEL
121.1

CPDLC



| | | | | |
|------|---|----------|------|---|
| ELEV | 9 | D | TDZE | 9 |
|------|---|----------|------|---|



| CATEGORY | A | B | C | D |
|-------------|---|--------|-------------|---|
| RNP 0.11 DA | | 267/24 | 258 (300-½) | |
| RNP 0.30 DA | | 317/24 | 308 (400-½) | |

AUTHORIZATION REQUIRED

SW-2, 31 DEC 2020 to 28 JAN 2021

SW-2, 31 DEC 2020 to 28 JAN 2021