

WAAS CH <b>72700</b> <b>W28A</b>	APP CRS <b>278°</b>	Rwy Idg TDZE Apt Elev	<b>6213</b> <b>9</b> <b>9</b>
--	------------------------	-----------------------------	-------------------------------------

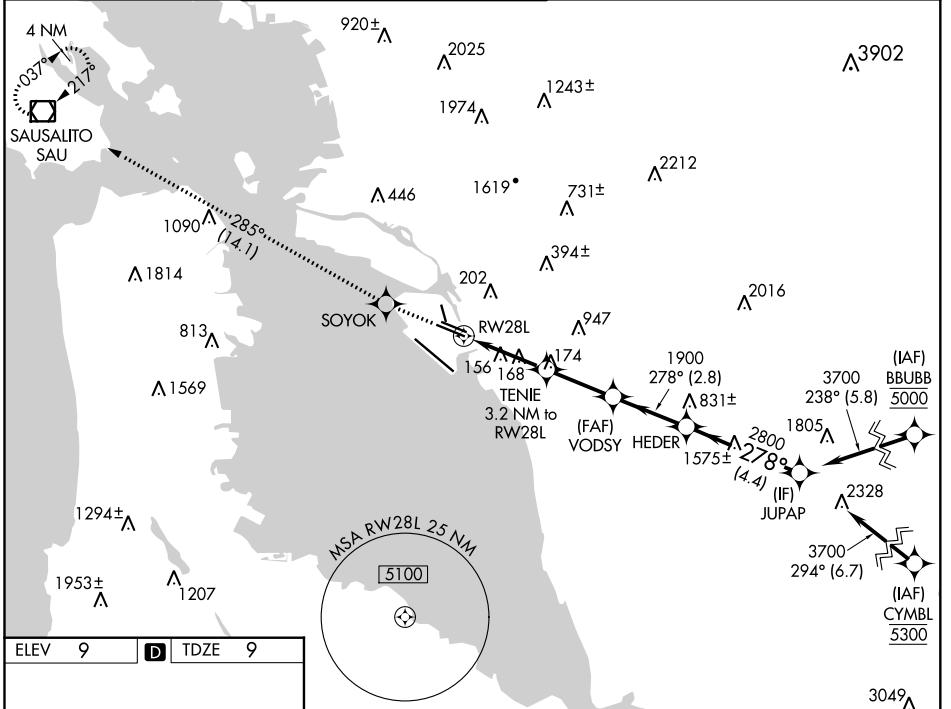
# RNAV (GPS) Y RWY 28L

METROPOLITAN OAKLAND INTL (OAK)

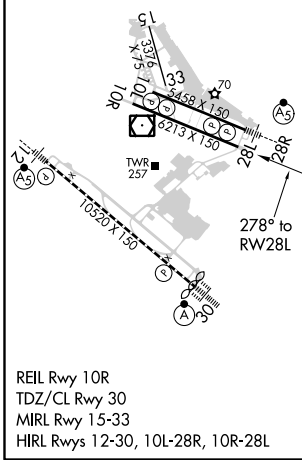
**▼** For uncompensated Baro-VNAV systems, LNAV/VNAV NA below 0°C (32°F) or above 54°C (130°F).  
**▲** DME/DME RNP-0.3 NA.

**MISSED APPROACH:** Climb to 4000 direct SOYOK and on track 285° to SAU VOR/DME and hold, continue climb-in-hold to 4000.

D-ATIS <b>133.775</b>	NORCAL APP CON <b>125.35 263.15</b>	OAKLAND TOWER <b>118.3 291.65</b> (Rwys 10L/R-28L/R, 15-33) <b>127.2 256.9</b> (Rwy 12-30)	GND CON <b>121.9</b> (Rwys 10L/R-28L/R, 15-33) <b>121.75</b> (Rwy 12-30)	CLNC DEL <b>121.1</b>	CPDLC
--------------------------	--	--	--	--------------------------	-------



ELEV	9	<b>D</b>	TDZE	9
------	---	----------	------	---



4000	SOYOK	SAU	VGSi and RNAV glidepath not coincident (VGSi Angle 3.00/TCH 50).			
↑	✦	tr 285°	VODSY	HEDER	JUPAP	
*LNAV only			TENIE	3700		
*1.1 NM to RWY28L			3.2 NM to RWY28L	GP 3.00° TCH 55		
RWY28L			1900	2800	3700	
1080*			1900			
1.1 NM			2.1 NM	2.6 NM	2.8 NM	4.4 NM
CATEGORY	A		B	C	D	
LPV DA	209/40		200 (200-¾)			
LNAV/VNAV DA	387-1¼		378 (400-1¼)			
LNAV MDA	420/55	411 (500-1)	420/60	411 (500-1¼)		
<b>C</b> CIRCLING	560-1	551 (600-1)	660-1¾	1400-3		
			651 (700-1¾)	1391 (1400-3)		

SW-2, 31 DEC 2020 to 28 JAN 2021

SW-2, 31 DEC 2020 to 28 JAN 2021