
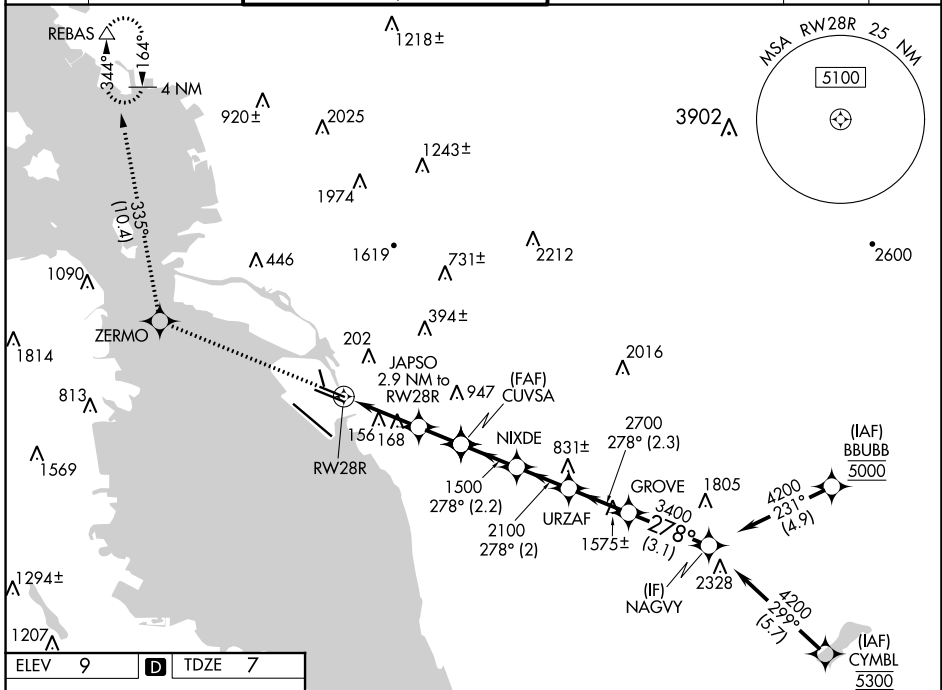


WAAS CH <b>42535</b> <b>W28B</b>	APP CRS <b>278°</b>	Rwy Idg TDZE Apt Elev	<b>5458</b> <b>7</b> <b>9</b>
--	------------------------	-----------------------------	-------------------------------------

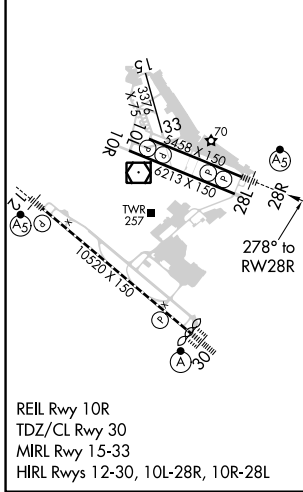
# RNAV (GPS) Y RWY 28R

METROPOLITAN OAKLAND INTL (OAK)

<p><b>▼</b> DME/DME RNP-0.3 NA. For uncompensated Baro-VNAV systems, LNAV/VNAV NA below 1°C (34°F) or above 54°C (130°F). #RVR 1800 authorized with use of FD or AP or HUD to DA.</p>	<p><b>MALSR</b></p> 	<p><b>MISSED APPROACH:</b> Climb to 3000 direct ZERMO and on track 335° to REBAS and hold.</p>			
<p>D-ATIS <b>133.775</b></p>	<p>NORCAL APP CON <b>125.35 263.15</b></p>	<p>OAKLAND TOWER <b>118.3 291.65</b> (Rwys 10L/R-28L/R, 15-33) <b>127.2 256.9</b> (Rwy 12-30)</p>	<p>GND CON <b>121.9</b> (Rwys 10L/R-28L/R, 15-33) <b>121.75</b> (Rwy 12-30)</p>	<p>CLNC DEL <b>121.1</b></p>	<p>CPDLC</p>



ELEV 9	<b>D</b>	TDZE 7
--------	----------	--------



3000	ZERMO	tr	335°	REBAS							
*LNAV only.					JAPSO	CUVSA	NIXDE	URZAF	GROVE	NAGVY	4200
		*1.2 NM to RWY 28R			2.9 NM to RWY 28R	1500	2100	2700	3400	278°	
						980*	1500				GP 3.00°
											TCH 53
1.2 NM	1.7 NM	1.6 NM	2.2 NM	2.2 NM	2.3 NM	3.1 NM					
CATEGORY	A		B		C		D				
LPV DA #			207/24		200 (200-½)						
LNAV/VNAV DA			387/40		380 (400-¾)						
LNAV MDA	440/24		433 (500-½)		440/40		433 (500-¾)				
<b>C</b> CIRCLING	560-1		551 (600-1)		660-1¾		651 (700-1¾)		1400-3		1391 (1400-3)

SW-2, 31 DEC 2020 to 28 JAN 2021

SW-2, 31 DEC 2020 to 28 JAN 2021