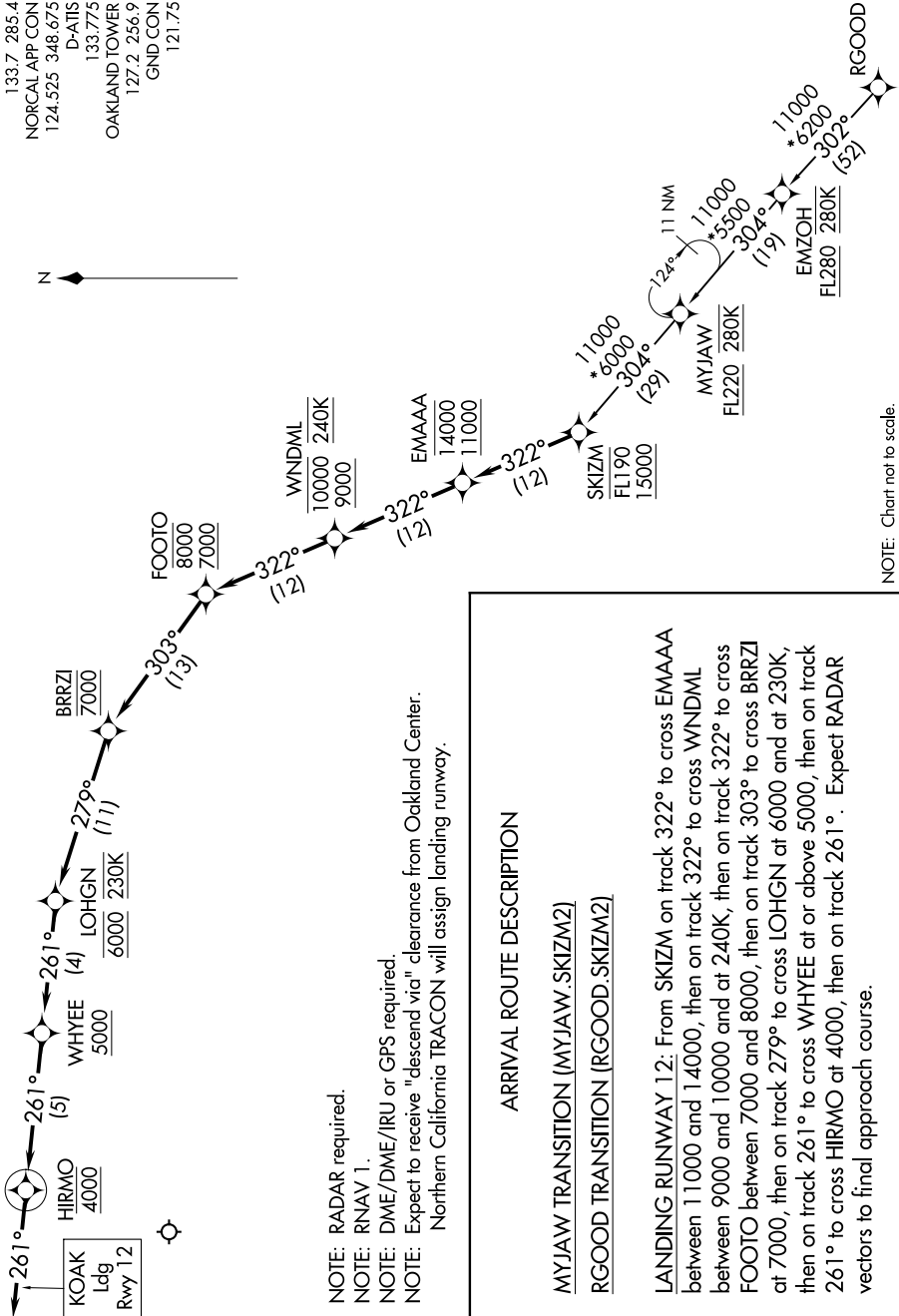


OAKLAND CENTER
133.7 285.4
NORCAL APP CON
124.525 348.675
D-AIIS
133.775
OAKLAND TOWER
127.2 256.9
GND CON
121.75

SW-2, 31 DEC 2020 to 28 JAN 2021



NOTE: RADAR required.
NOTE: RNAV 1.
NOTE: DME/DME/IRU or GPS required.
NOTE: Expect to receive "descend via" clearance from Oakland Center.
Northern California TRACON will assign landing runway.

ARRIVAL ROUTE DESCRIPTION

MYJAW TRANSITION (MYJAW.SKIZM2)
RGOOD TRANSITION (RGOOD.SKIZM2)

LANDING RUNWAY 12: From SKIZM on track 322° to cross EMAAA between 11000 and 14000, then on track 322° to cross WNDML between 9000 and 10000 and at 240K, then on track 322° to cross FOOTO between 7000 and 8000, then on track 303° to cross BRRZI at 7000, then on track 279° to cross LOHGN at 6000 and at 230K, then on track 261° to cross WHYEE at or above 5000, then on track 261° to cross HIRMO at 4000, then on track 261°. Expect RADAR vectors to final approach course.

NOTE: Chart not to scale.