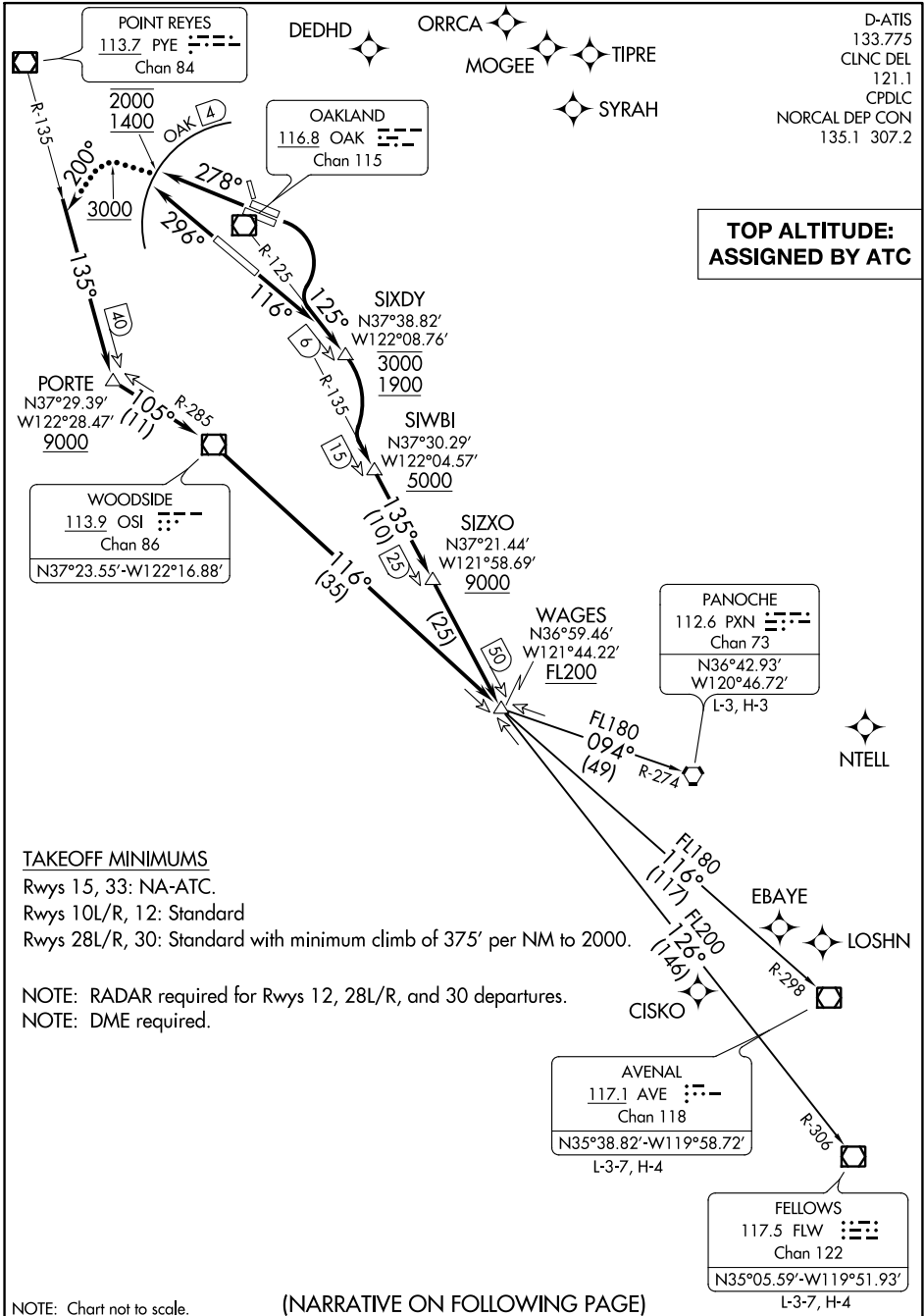


(SKYL1.WAGES) 19227  
**SKYLINE ONE DEPARTURE**

AL-294 (FAA)

METROPOLITAN OAKLAND INTL (OAK)  
 OAKLAND, CALIFORNIA

D-ATIS  
 133.775  
 CLNC DEL  
 121.1  
 CPDLC  
 NORCAL DEP CON  
 135.1 307.2



**TAKEOFF MINIMUMS**

- Rwys 15, 33: NA-ATC.
- Rwys 10L/R, 12: Standard
- Rwys 28L/R, 30: Standard with minimum climb of 375' per NM to 2000.

NOTE: RADAR required for Rwys 12, 28L/R, and 30 departures.  
 NOTE: DME required.

NOTE: Chart not to scale.

(NARRATIVE ON FOLLOWING PAGE)

**SKYLINE ONE DEPARTURE**  
 (SKYL1.WAGES) 15AUG19

OAKLAND, CALIFORNIA  
 METROPOLITAN OAKLAND INTL (OAK)

SW-2, 31 DEC 2020 to 28 JAN 2021

SW-2, 31 DEC 2020 to 28 JAN 2021