

BLYTHE FIVE ARRIVAL

AL-322 (FAA)

PHOENIX, ARIZONA

SW-4, 31 DEC 2020 to 28 JAN 2021

ARRIVAL ROUTE DESCRIPTION

BLYTHE TRANSITION (BLH.BLH5): From over BLH VORTAC on BLH R-082 to SALOM, then on GBN R-285 and IWA R-256 to ARLIN. Thence

PHOENIX SKY HARBOR INTL: Rwy 7L/R or 8: From over ARLIN, expect vectors to final approach course; Rwy 25L/R or 26: From over ARLIN, on IWA R-256 to TUKEE. Expect vectors to final approach course prior to TUKEE.
SATELLITE AIRPORTS: Expect vectors after passing SALOM.

LOST COMMUNICATIONS: After ARLIN, on IWA R-256 and PXR R-143 to PXR VORTAC.

BLYTHE
117.4 BLH
Chan 121
N33°35.76' W114°45.68'
L-4-5, H-4

SALOM
N33°30.97' W113°53.33
VERTICAL NAVIGATION
PLANNING INFORMATION
Turboprop expect 17000
Turbojet landing KPHX expect vectors after SALOM.

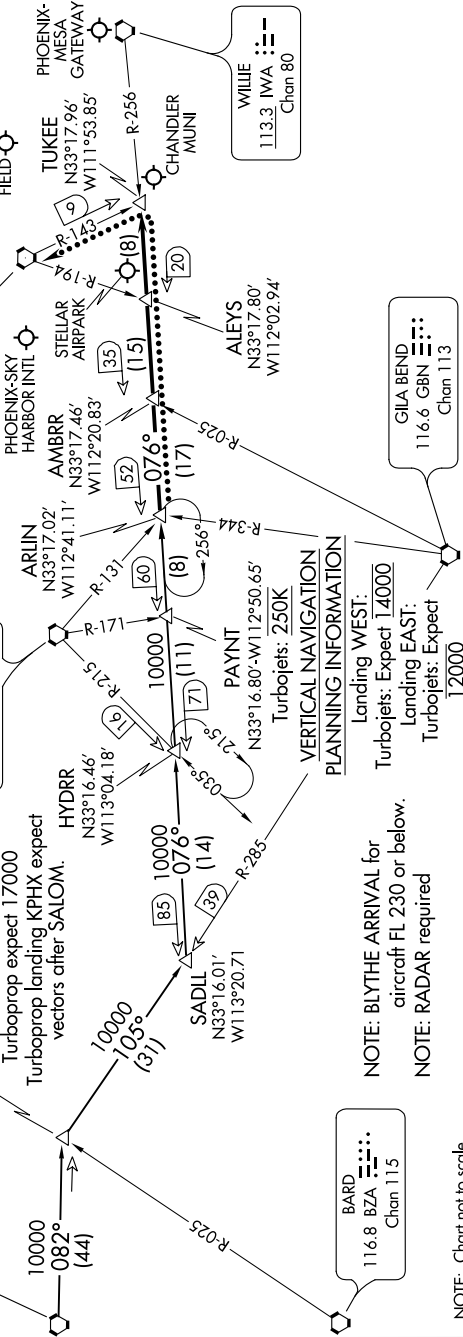
BUCKEYE
110.6 BKK
Chan 43

ARLIN
N33°17.02' W112°41.11'
R-131

PHOENIX-SKY HARBOR INTL
115.6 PXR
Chan 103
N33°25.98' W111°58.21'

PHOENIX
118.7 TOWER
118.7 278.8 (Rwy 8-26)
120.9 254.3 (Rwy 7L-25R, 7R-25L)
PHOENIX GND CON
119.75 269.2
CHANDLER MUNI ATIS
128.325
FALCON FIELD ATIS
118.25
PHOENIX DEER VALLEY ATIS
126.5
PHOENIX-MESA GATEWAY ATIS
133.5 270.275
PHOENIX SKY HARBOR D-ATIS
127.575
SCOTTSDALE ATIS
118.6

PHOENIX APP CON
124.1 256.9
PHOENIX TOWER
118.7 278.8 (Rwy 8-26)
120.9 254.3 (Rwy 7L-25R, 7R-25L)
PHOENIX GND CON
119.75 269.2
CHANDLER MUNI ATIS
128.325
FALCON FIELD ATIS
118.25
PHOENIX DEER VALLEY ATIS
126.5
PHOENIX-MESA GATEWAY ATIS
133.5 270.275
PHOENIX SKY HARBOR D-ATIS
127.575
SCOTTSDALE ATIS
118.6



BLYTHE FIVE ARRIVAL

PHOENIX, ARIZONA

SW-4, 31 DEC 2020 to 28 JAN 2021