

# HARBOR VISUAL RWY 29

AL-329 (FAA)

PORTLAND INTL JETPORT (PWM)  
PORTLAND, MAINE

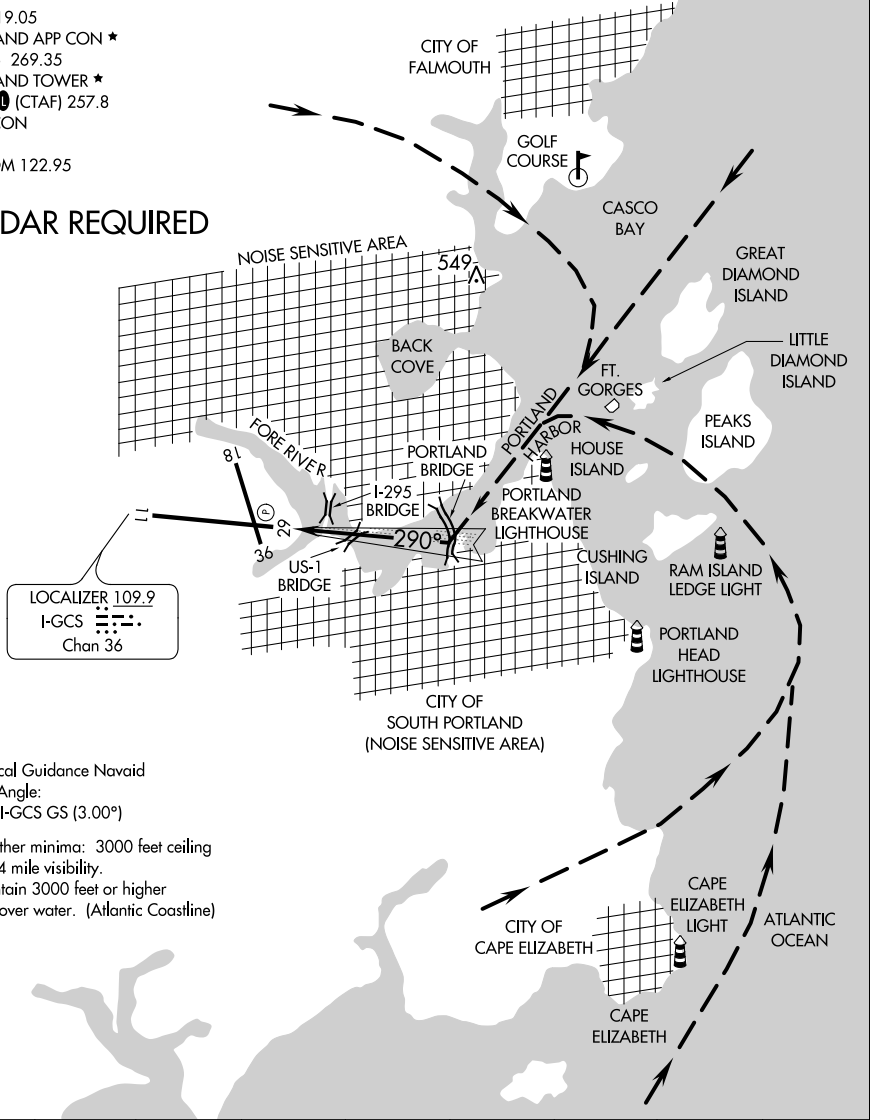
ATIS 119.05  
 PORTLAND APP CON ★  
 119.75 269.35  
 PORTLAND TOWER ★  
 120.9 (CTAF) 257.8  
 GND CON  
 121.9  
 UNICOM 122.95

## RADAR REQUIRED

LOCALIZER 109.9  
 I-GCS  
 Chan 36

Vertical Guidance Navaid  
 and Angle:  
 LOC I-GCS GS (3.00°)

Weather minima: 3000 feet ceiling  
 and 4 mile visibility.  
 Maintain 3000 feet or higher  
 until over water. (Atlantic Coastline)



NE-1, 31 DEC 2020 to 28 JAN 2021

NE-1, 31 DEC 2020 to 28 JAN 2021

1 NM	2	3	4	5	6	7	8
------	---	---	---	---	---	---	---

PROCEDURE NOT AUTHORIZED AT NIGHT.

# HARBOR VISUAL RWY 29

Amdt 2 10MAR11

43°39'N-70°19'W

PORTLAND, MAINE  
PORTLAND INTL JETPORT (PWM)