

ILS or LOC RWY 11

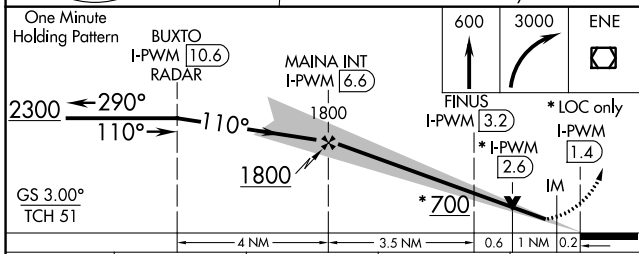
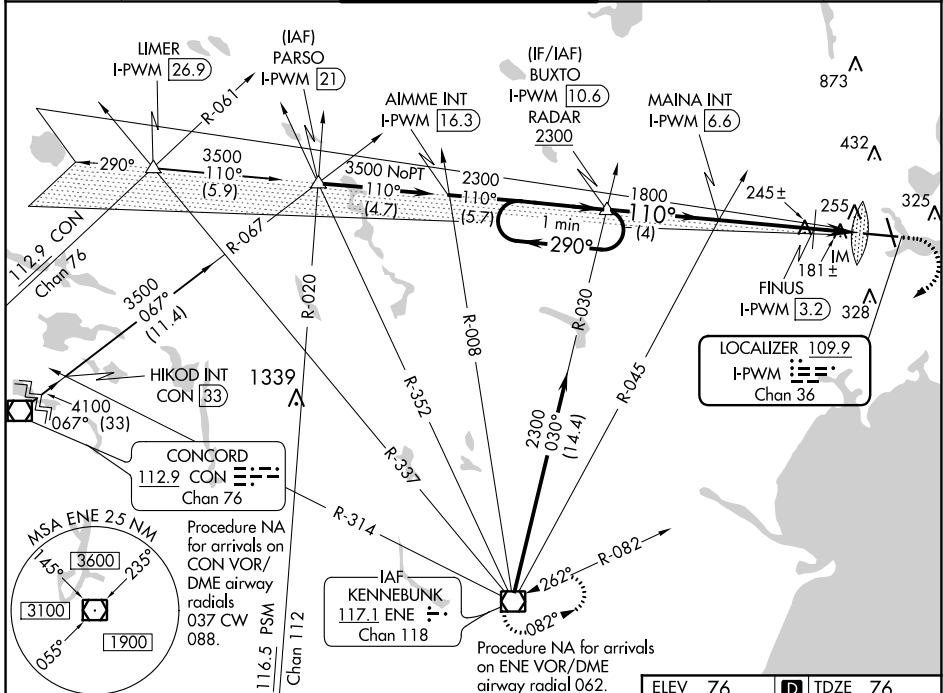
PORTLAND INTL JETPORT (PWM)

LOC/DME I-PWM 109.9 Chan 36	APP CRS 110°	Rwy Idg 7200 TDZE 76 Apt Elev 76
---	------------------------	---

⚠ For inoperative ALSF-2, increase S-LOC 11 Cat C/D visibility to 1½ mile. Increase FINUS fix minimums S-LOC 11 Cat C/D visibility to RVR 5500.

ALSF-2 MISSED APPROACH: Climb to 600 then climbing right turn to 3000 direct ENE VOR/DME and hold.

ATIS 119.05	PORTLAND APP CON * 119.75 269.35	PORTLAND TOWER * 120.9 (CTAF) 257.8	GND CON 121.9	CLNC DEL 121.9	UNICOM 122.95
-----------------------	--	--	-------------------------	--------------------------	-------------------------



ELEV 76	TDZE 76
---------	---------

TWR 162
8L
110
0.5% UP
7200 X 150
36

110° 5.3 NM from FAF

TDZ/CL Rwy 11

MIRL Rwy 18-36

HIRL Rwy 11-29

REIL Rws 18 and 36

FAF to MAP 5.3 NM					
Knots	60	90	120	150	180
Min:Sec	5:18	3:32	2:39	2:07	1:46

CATEGORY	A	B	C	D
S-ILS 11	276/18 200 (200-½)			
S-LOC 11	700/24	624 (700-½)	700-1¾	624 (700-1¾)
CIRCLING	700-1	624 (700-1)	740-1¾ 664 (700-1¾)	860-2½ 784 (800-2½)
FINUS FIX MINIMUMS				
S-LOC 11	440/24	364 (400-½)	440/35	364 (400-¾)
CIRCLING	620-1 544 (600-1)	640-1 564 (600-1)	740-1¾ 664 (700-1¾)	860-2½ 784 (800-2½)

NE-1, 31 DEC 2020 to 28 JAN 2021

NE-1, 31 DEC 2020 to 28 JAN 2021