

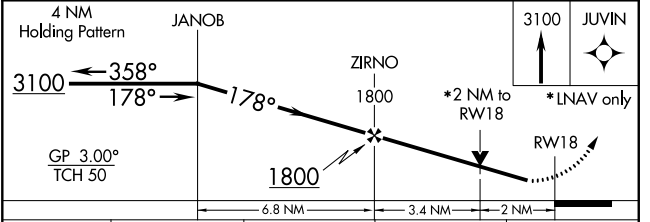
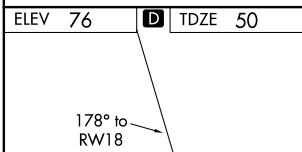
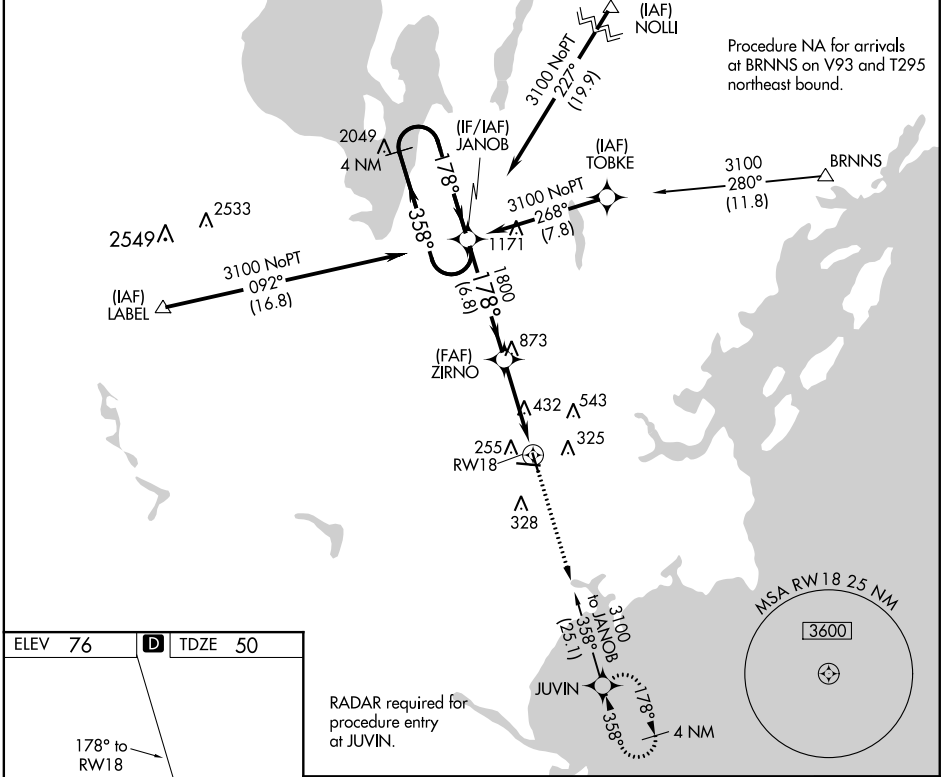
WAAS CH <b>77925</b> <b>W18A</b>	APP CRS <b>178°</b>	Rwy Idg TDZE Apt Elev	<b>5150</b> <b>50</b> <b>76</b>
--	------------------------	-----------------------------	---------------------------------------

# RNAV (GPS) RWY 18

PORTLAND INTL JETPORT (P<sup>WM</sup>)

RNP APCH.	MISSED APPROACH: Climb to 3100 direct JUVIN and hold, continue climb-in-hold to 3100.
▼ For uncompensated Baro-VNAV systems, LNAV/VNAV NA below -18°C or above 54°C. Rwy 18 helicopter visibility reduction below 3/4 SM NA.	

ATIS <b>119.05</b>	PORTLAND APP CON ★ <b>119.75 269.35</b>	PORTLAND TOWER ★ <b>120.9</b> (CTAF) <b>257.8</b>	GND CON <b>121.9</b>	CLNC DEL <b>121.9</b>	UNICOM <b>122.95</b>
-----------------------	--	--	-------------------------	--------------------------	-------------------------



CATEGORY	A	B	C	D
LPV DA		300-3/4	250 (300-3/4)	
LNAV/VNAV DA		477-1 1/8	427 (500-1 1/8)	
LNAV MDA	740-1	690 (700-1)	740-2	690 (700-2)
CIRCLING	740-1	664 (700-1)	740-2	860-2 1/2 784 (800-2 1/2)

NE-1, 31 DEC 2020 to 28 JAN 2021

NE-1, 31 DEC 2020 to 28 JAN 2021