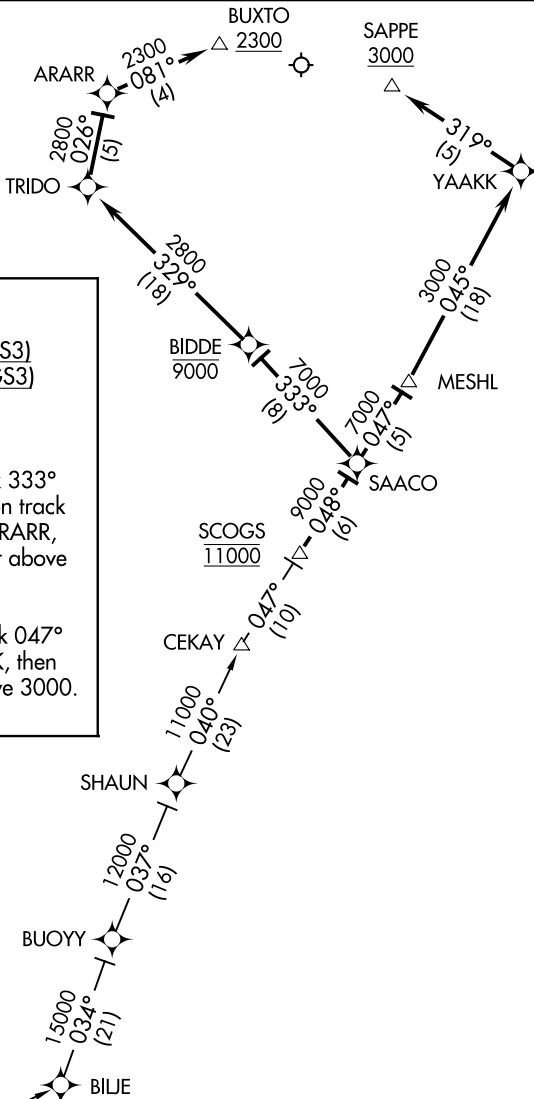


SCOGS THREE ARRIVAL (RNAV)

PORTLAND APP CON ★
119.75 269.35
ATIS
119.05



ARRIVAL ROUTE DESCRIPTION

BRIDGEPORT TRANSITION (BDR.SCOGS3)
CALVERTON TRANSITION (CCC.SCOGS3)

From SCOGS on track 048° to SAACO.

Landing Rwy 11: From SAACO on track 333° to cross BIDDE at or below 9000, then on track 329° to TRIDO, then on track 026° to ARARR, then on track 081° to cross BUXTO at or above 2300. Expect ILS or LOC Rwy 11.

Landing Rwy 29: From SAACO on track 047° to MESH, then on track 045° to YAACK, then on track 319° to cross SAPPE at or above 3000. Expect ILS or LOC to Rwy 29.

BRIDGEPORT
BDR

CALVERTON
CCC

- NOTE: RNAV 1.
- NOTE: DME/DME/IRU or GPS required.
- NOTE: RADAR required for non-GPS aircraft.
- NOTE: Expect PORTLAND APP CON to issue runway transition 10 NM prior to SAACO.

NOTE: Chart not to scale.