

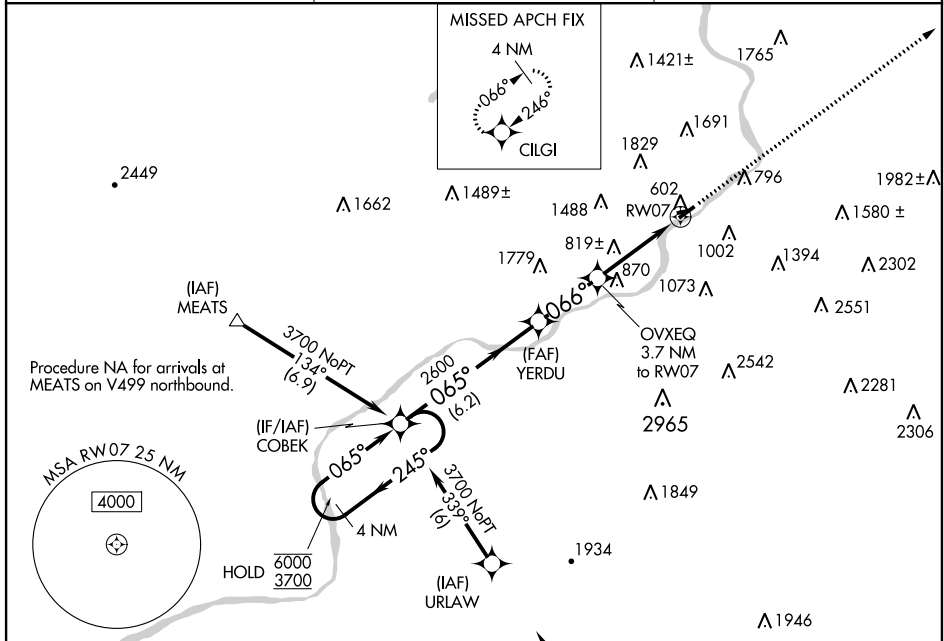
WAAS CH 86624 W07A	APP CRS 066°	Rwy Idg TDZE 543 Apt Elev 543	3375
--	------------------------	---	-------------

RNAV (GPS) RWY 7

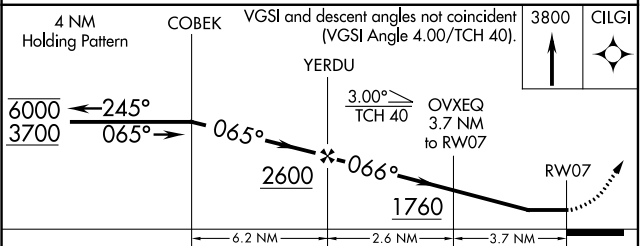
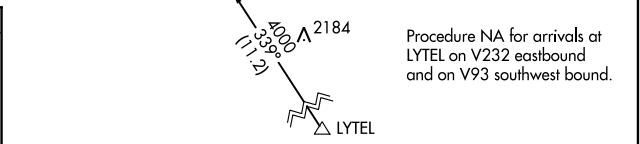
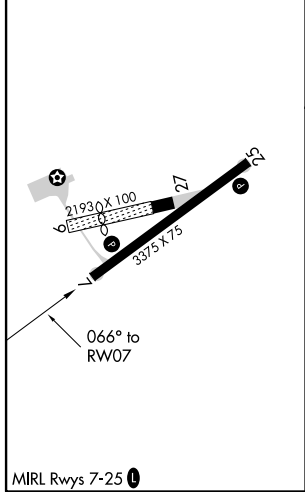
WILKES-BARRE WYOMING VALLEY (WBW)

RNP APCH. ▼ NA	Rwy 7 helicopter visibility reduction below 1 SM NA. Use Wilkes-Barre/Scranton altimeter setting. Circling NA NW of Rwy 7-25. Straight-in and Circling Rwy 7 NA at night.	MISSED APPROACH: Climb to 3800 direct CILGI and hold.
----------------------	---	---

AVP ASOS 111.6	WILKES-BARRE APP CON 126.3 256.7	UNICOM 122.8 (CTAF) 0
--------------------------	--	---------------------------------



ELEV 543	TDZE 543
-----------------	-----------------



CATEGORY	A	B	C	D
LP MDA	1160-1	617 (700-1)		NA
LNAV MDA	1300-1 757 (800-1)	1300-1¼ 757 (800-1¼)		NA
CIRCLING	1300-1 757 (800-1)	1300-1¼ 757 (800-1¼)		NA

NE-4, 31 DEC 2020 to 28 JAN 2021

NE-4, 31 DEC 2020 to 28 JAN 2021