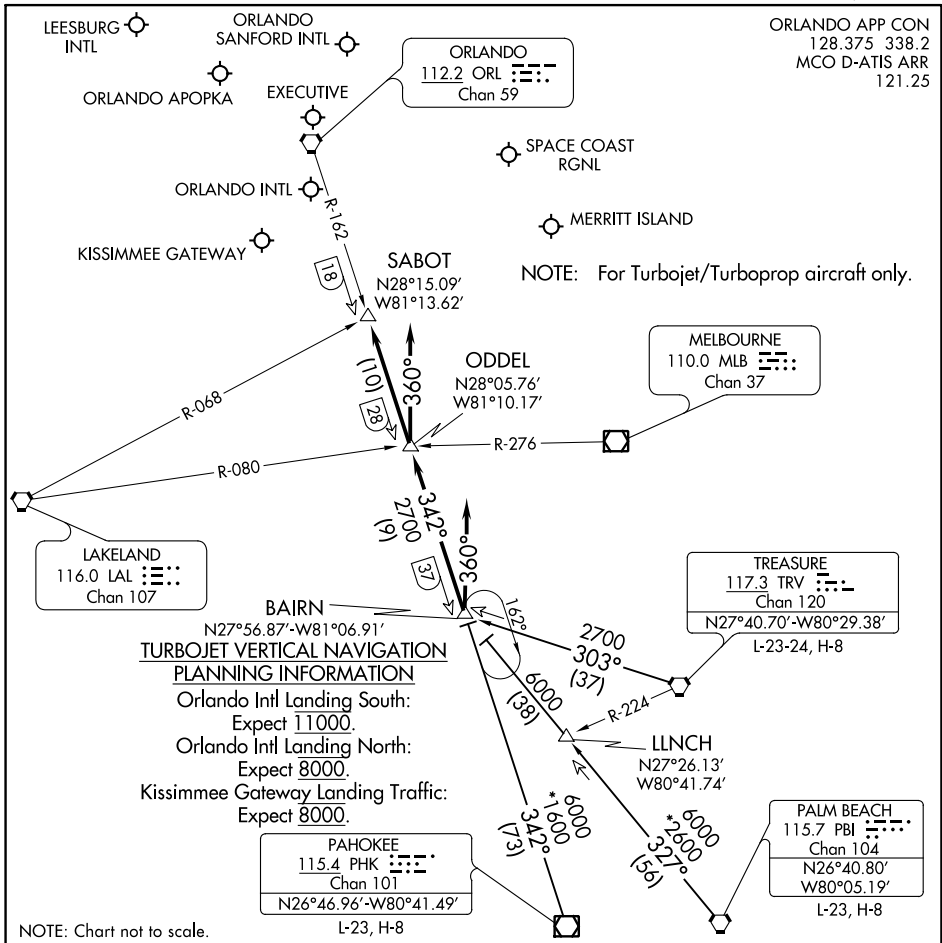


GOOFY SEVEN ARRIVAL

AL-571 (FAA)

ORLANDO, FLORIDA



ARRIVAL ROUTE DESCRIPTION

PAHOKEE TRANSITION (PHK.GOOFY7): From over PHK VOR/DME on PHK R-342 to BAIRN INT.

Thence. . .

PALM BEACH TRANSITION (PBI.GOOFY7): From over PBI VORTAC on PBI R-327 to BAIRN INT.

Thence. . .

TREASURE TRANSITION (TRV.GOOFY7): From over TRV VORTAC on TRV R-303 to BAIRN INT.

Thence. . .

ORLANDO INTL:

. . . Rwy 17/18: From over BAIRN INT on ORL VORTAC R-162 to ODDEL INT. Depart ODDEL INT heading 360° for vector to final approach course.

. . . Rwy 35/36: Depart BAIRN INT heading 360° for vector to final approach course.

LEESBURG INTL: . . . From over BAIRN INT on ORL VORTAC R-162 to SABOT INT. Expect RADAR vectors to the airport.

ALL OTHER AIRPORTS: . . . From over BAIRN INT on ORL VORTAC R-162 to SABOT INT.

Expect RADAR vectors to final approach course.

GOOFY SEVEN ARRIVAL

(BAIRN.GOOFY7) 27APR17

ORLANDO, FLORIDA

SE-3, 31 DEC 2020 to 28 JAN 2021

SE-3, 31 DEC 2020 to 28 JAN 2021