

LOC/DME I-ARK <b>110.95</b> Chan 46(Y)	APP CRS <b>185°</b>	Rwy Idg TDZE Apt Elev	<b>9000</b> <b>90</b> <b>96</b>
--	------------------------	-----------------------------	---------------------------------------

# ILS RWY 17L (CAT II & III)

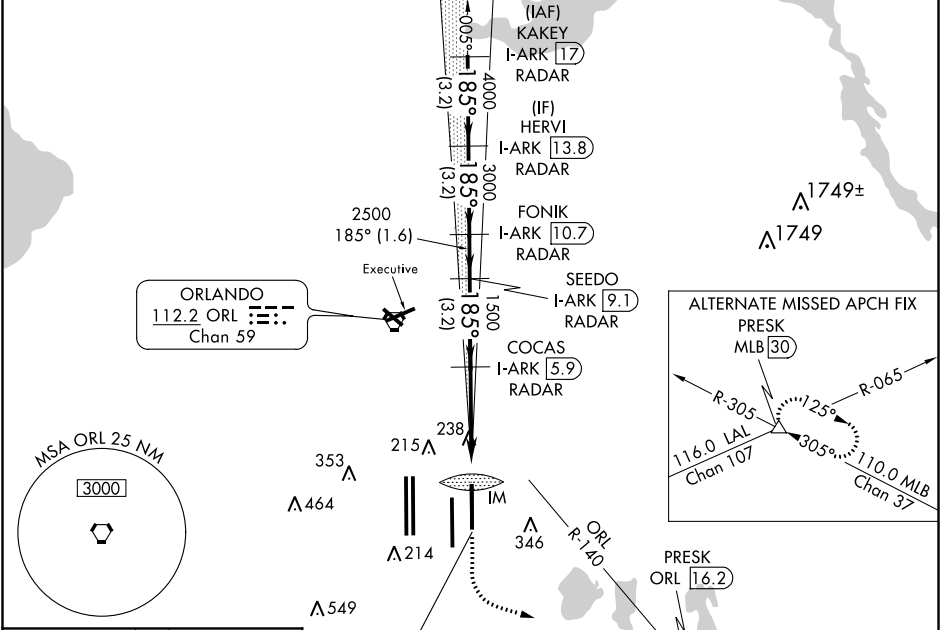
ORLANDO INTL (MCO)

RADAR required for procedure entry. DME or RADAR required.

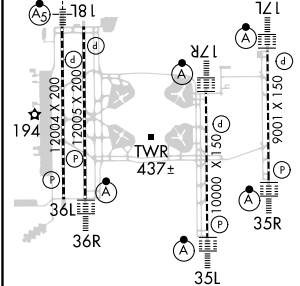
ALSF-2

MISSED APPROACH: Climb to 500 then climbing left turn to 3000 on heading 100° and ORL VORTAC R-140 to PRESK INT/ORL 16.2 DME and hold, continue climb-in-hold to 3000.

D-ATIS ARR <b>121.25</b> DEP <b>120.525</b>	ORLANDO APP CON <b>124.8 307.0</b>	ORLANDO TOWER <b>124.3</b> (Rwys 18L-36R, 18R-36L) <b>118.45</b> (Rwys 17L-35R, 17R-35L)	<b>253.5</b>	GND CON <b>126.4 275.8</b> (East) <b>121.8 275.8</b> (West)	CLNC DEL <b>134.7</b> <b>341.7</b>	CPDLC
---	---------------------------------------	--	--------------	---	--	-------

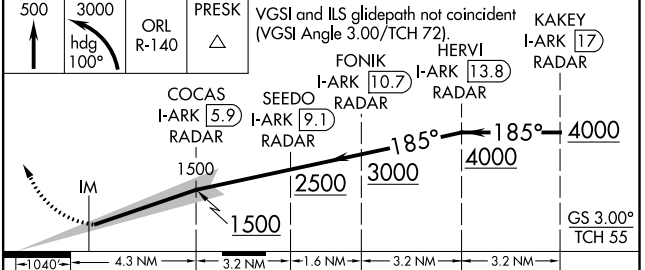


ELEV 96	<b>D</b>	TDZE 90
---------	----------	---------



HIRL all Rwys  
REIL Rwy 36L  
TDZ/CL Rwys 17L/R, 18R, 35L/R and 36R

LOCALIZER 110.95 I-ARK Chan 46(Y)	ORL 16.2 PRESK	VGSI and ILS glidepath not coincident (VGSI Angle 3.00/TCH 72).	KAKEY I-ARK 17 RADAR
---	-------------------	--	-------------------------



CATEGORY	A	B	C	D
S-ILS 17L	CAT II RA 101/12 100 DA 190			
S-ILS 17L	CAT III RVR 600			

**CATEGORY II & III ILS - SPECIAL AIRCREW & AIRCRAFT CERTIFICATION REQUIRED**

SE-3, 31 DEC 2020 to 28 JAN 2021

SE-3, 31 DEC 2020 to 28 JAN 2021