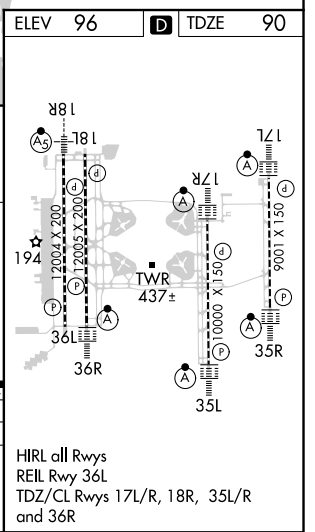
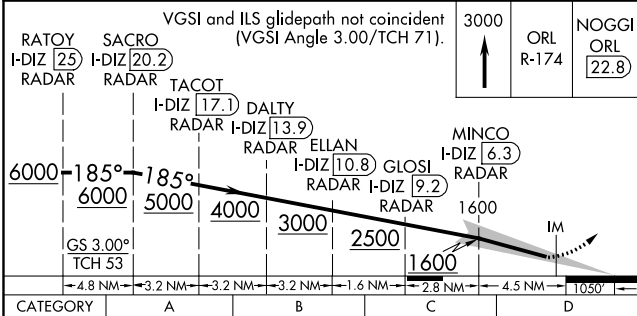
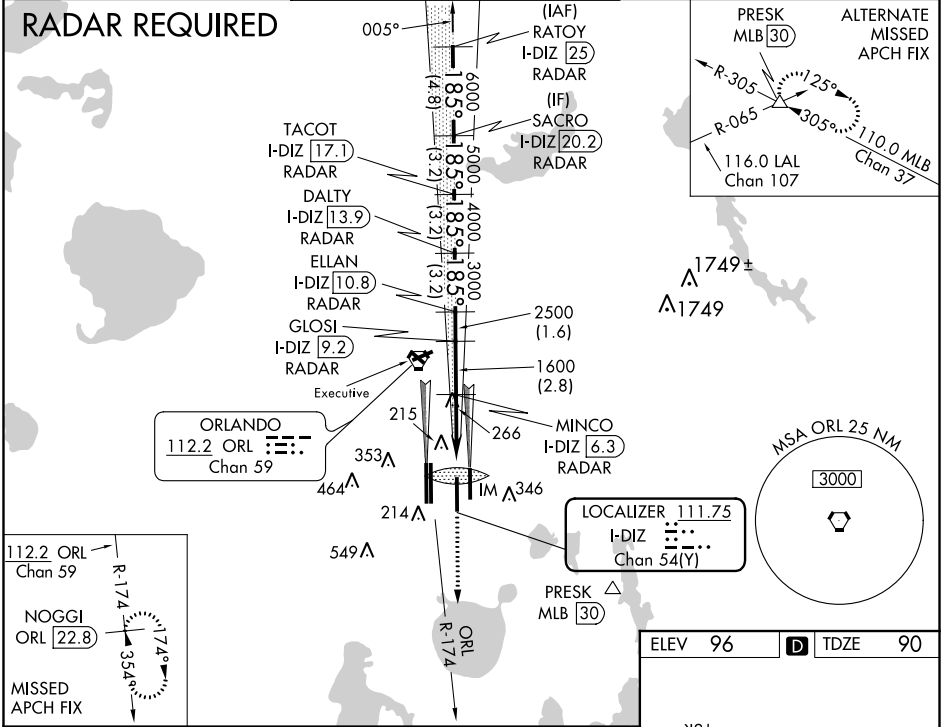


LOC/DME I-DIZ <b>111.75</b> Chan <b>54(Y)</b>	APP CRS <b>185°</b>	Rwy Idg <b>10000</b> TDZE <b>90</b> Apt Elev <b>96</b>
---	------------------------	--

# ILS RWY 17R (CAT II)

ORLANDO INTL (MCO)

<p><b>Simultaneous approach authorized. DME or RADAR required.</b>  <b>Bright lights on highway midway between Rwy 17L and Rwy 17R may be mistaken for runway lights.</b></p>		<p>ALSF-2  </p>	<p>MISSED APPROACH: Climb to 3000 via ORL VORTAC R-174 to NOGGI/ORL 22.8 DME and hold.</p>		
D-ATIS ARR <b>121.25</b> DEP <b>120.525</b>	ORLANDO APP CON <b>124.8 307.0</b>	ORLANDO TOWER <b>124.3</b> (Rwys 18L-36R, 18R-36L) <b>118.45</b> (Rwys 17L-35R, 17R-35L)	GND CON <b>126.4 275.8</b> (East) <b>121.8 275.8</b> (West)	CLNC DEL <b>134.7</b> <b>341.7</b>	CPDLC



**CATEGORY II ILS - SPECIAL AIRCREW & AIRCRAFT CERTIFICATION REQUIRED**

SE-3, 31 DEC 2020 to 28 JAN 2021

SE-3, 31 DEC 2020 to 28 JAN 2021