

LOC/DME I- <b>DDO</b> <b>110.5</b> Chan <b>42</b>	APP CRS <b>005°</b>	Rwy Idg <b>10000</b> TDZE <b>88</b> Apt Elev <b>96</b>
---	------------------------	--

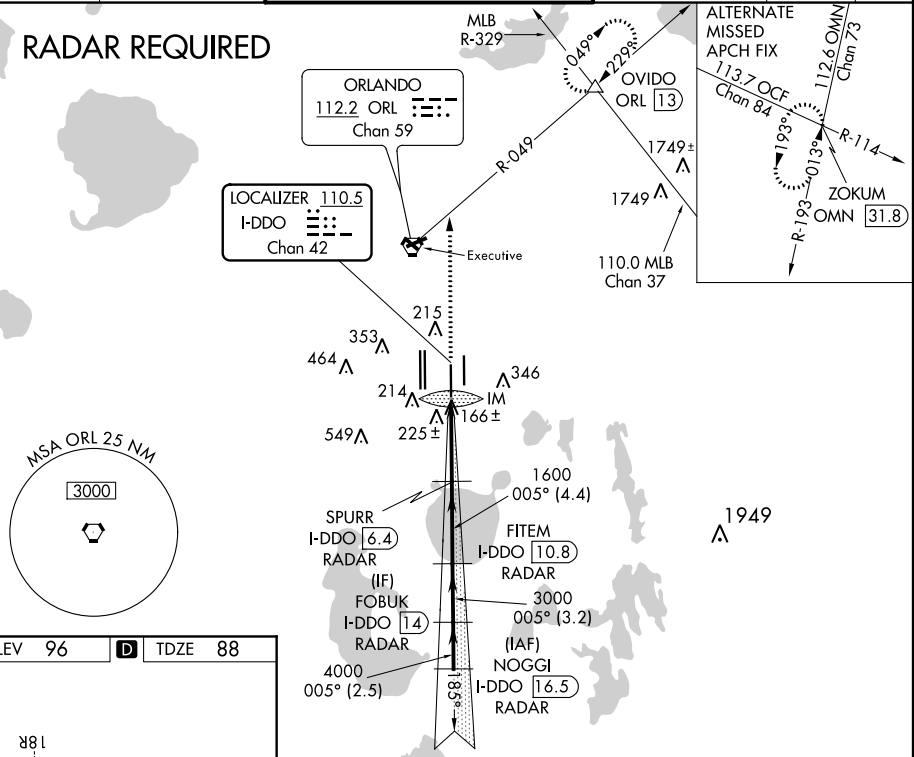
**ILS RWY 35L (SA CAT I)**  
ORLANDO INTL (MCO)

**⚠** DME or RADAR required. Bright lights on highway midway between Rwy 35L and Rwy 35R may be mistaken for runway lights. Simultaneous approach authorized. When using alternate missed approach, simultaneous approach NA. Requires specific OPSPEC, MSPEC or LOA approval and use of HUD to DH.

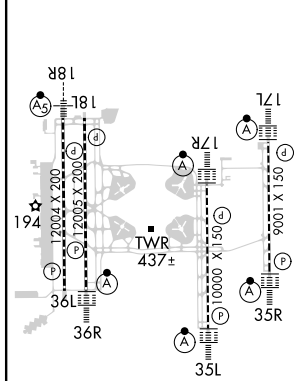
**ALSIF-2** (A) **MISSED APPROACH:** Climb to 3000 on heading 005° and ORL VORTAC R-049 to OVIDO INT/ ORL 13 DME and hold.

D-ATIS ARR <b>121.25</b> DEP <b>120.525</b>	ORLANDO APP CON <b>124.8 307.0</b>	ORLANDO TOWER <b>124.3</b> (Rwys 18L-36R, 18R-36L) <b>253.5</b> <b>118.45</b> (Rwys 17L-35R, 17R-35L) <b>253.5</b>	GND CON <b>126.4 275.8</b> (East) <b>121.8 275.8</b> (West)	CLNC DEL <b>134.7</b> <b>341.7</b>	CPDLC
---	---------------------------------------	--	--	--	-------

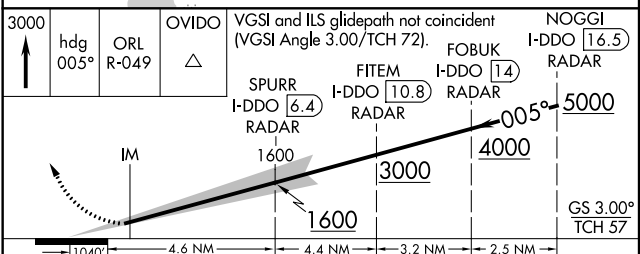
**RADAR REQUIRED**



ELEV <b>96</b>	<b>D</b>	TDZE <b>88</b>
----------------	----------	----------------



HIRL all Rwys  
REIL Rwy 36L  
TDZ/CL Rwys 17L/R, 18R,  
35L/R and 36R



CATEGORY	A	B	C	D
----------	---	---	---	---

S-ILS 35R RA 164/14 150 DA 238

**SA CATEGORY I ILS - SPECIAL AIRCREW & AIRCRAFT CERTIFICATION REQUIRED**

SE-3, 31 DEC 2020 to 28 JAN 2021

SE-3, 31 DEC 2020 to 28 JAN 2021