

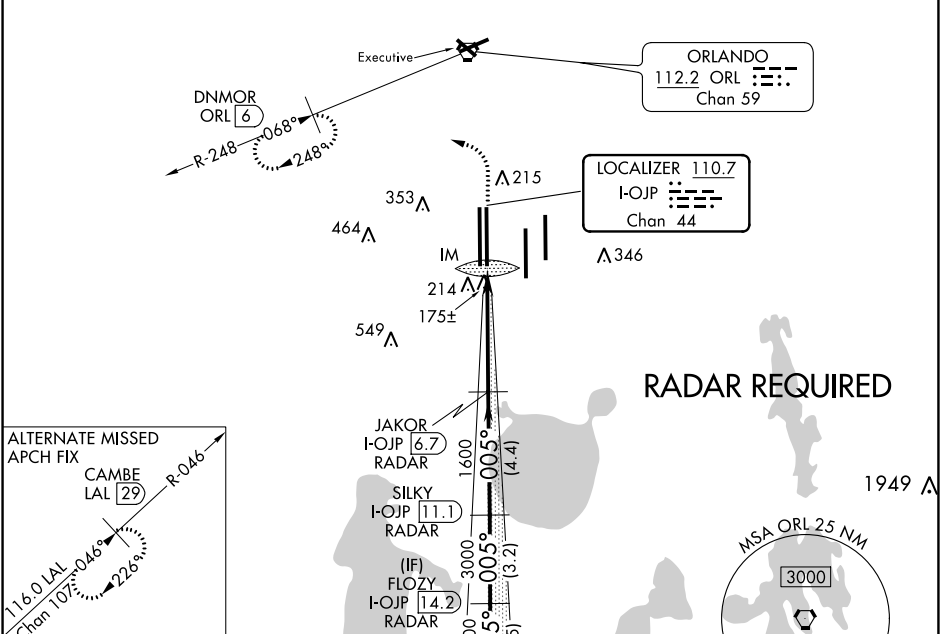
LOC/DME I-OJP 110.7 Chan 44	APP CRS 005°	Rwy Idg 11601 TDZE 92 Apt Elev 96
---	------------------------	--

ILS RWY 36R (CAT II & III)

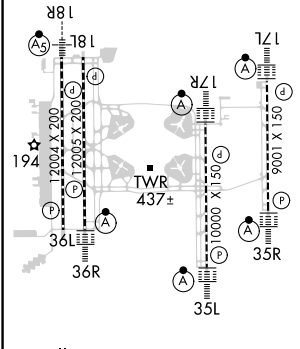
ORLANDO INTL (MCO)

	DME or RADAR required. Simultaneous approach authorized.		MISSED APPROACH: Climb to 500 then climbing left turn to 3000 on heading 309° and ORL R-248 to DNMR/ORL 6 DME and hold, continue climb-in-hold to 3000.

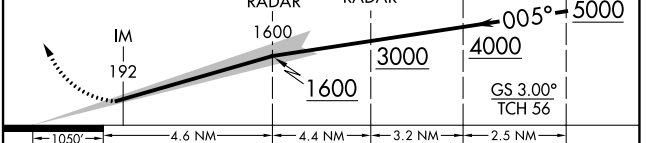
D-ATIS ARR 121.25 DEP 120.525	ORLANDO APP CON 124.8 307.0	ORLANDO TOWER 124.3 (Rwys 18L-36R, 18R-36L) 253.5 118.45 (Rwys 17L-35R, 17R-35L) 253.5	GND CON 126.4 275.8 (East) 121.8 275.8 (West)	CLNC DEL 134.7 341.7	CPDLC
---	---------------------------------------	--	---	--	-------



ELEV 96	D	TDZE 92
----------------	----------	----------------



500	3000	hdg 309° ORL R-248	DNMR ORL 6	VGSI and ILS glidepath not coincident. (VGSI Angle 3.00/TCH 70).	TRAMP I-OJP (16.8) RADAR
					FLOZY I-OJP (14.2) RADAR
					JAKOR I-OJP (6.7) RADAR
					SILKY I-OJP (11.1) RADAR



CATEGORY	A	B	C	D
S-ILS 36R	CAT II RA106/12 100 DA 192			
S-ILS 36R	CAT III RVR 06			

CATEGORY II & III ILS - SPECIAL AIRCREW & AIRCRAFT CERTIFICATION REQUIRED

SE-3, 31 DEC 2020 to 28 JAN 2021

SE-3, 31 DEC 2020 to 28 JAN 2021