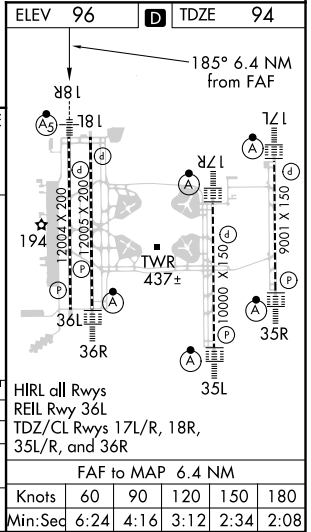
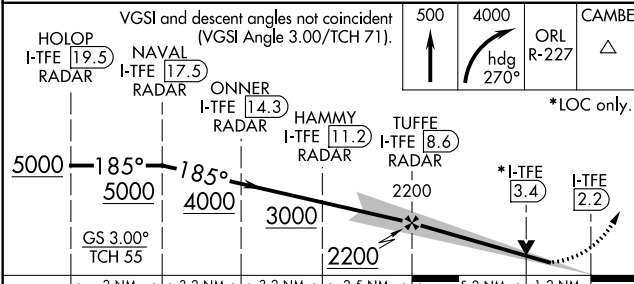
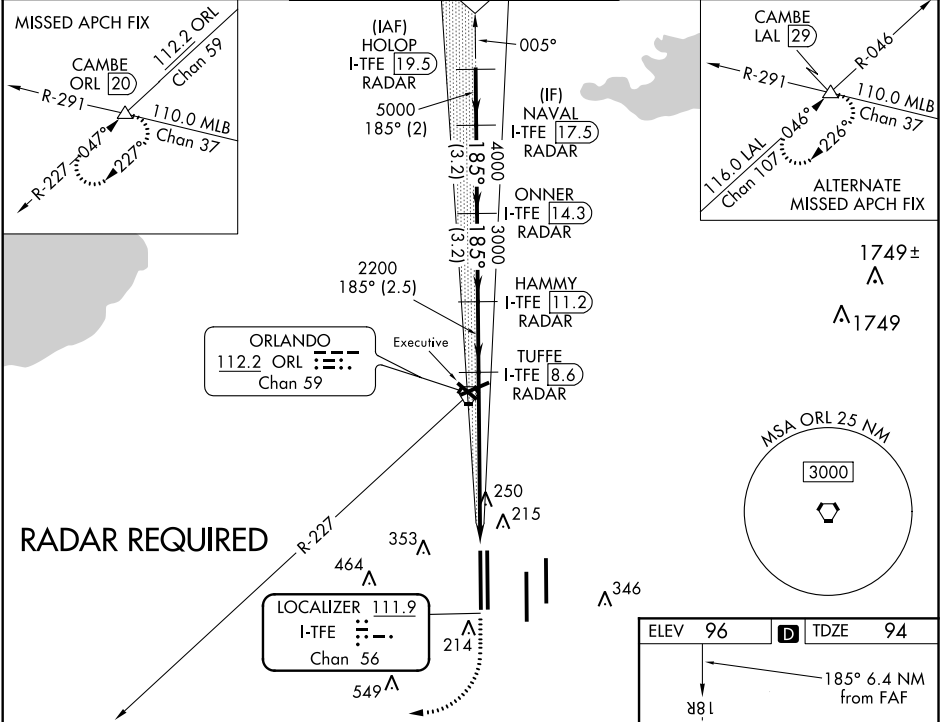


LOC/DME I-TFE <b>111.9</b> Chan <b>56</b>	APP CRS <b>185°</b>	Rwy Idg <b>12004</b> TDZE <b>94</b> Apt Elev <b>96</b>
---	------------------------	--

# ILS or LOC RWY 18R

ORLANDO INTL (MCO)

<p><b>Simultaneous approach authorized.</b> DME or RADAR required.</p>		<p>MALS R</p>	<p>MISSED APPROACH: Climb to 500 then climbing right turn to 4000 on heading 270° and on ORL VORTAC R-227 to CAMBE INT/ORL 20 DME and hold, continue climb-in-hold to 4000.</p>			
D-ATIS ARR <b>121.25</b> DEP <b>120.525</b>	ORLANDO APP CON <b>124.8 307.0</b>	ORLANDO TOWER <b>124.3</b> (Rwys 18L-36R, 18R-36L) <b>118.45</b> (Rwys 17L-35R, 17R-35L)	<b>253.5</b>	GND CON <b>126.4 275.8</b> (East) <b>121.8 275.8</b> (West)	CLNC DEL <b>134.7</b> <b>341.7</b>	CPDLC



CATEGORY	A	B	C	D
S-ILS 18R	294/18 200 (200-½)			
S-LOC 18R	540/24 446 (500-½)	540/45 446 (500-¾)		
CIRCLING	740-1 644 (700-1)	740-1¾ 644 (700-1¾)	740-2 644 (700-2)	

SE-3, 31 DEC 2020 to 28 JAN 2021

SE-3, 31 DEC 2020 to 28 JAN 2021