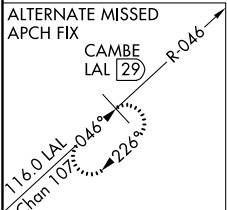
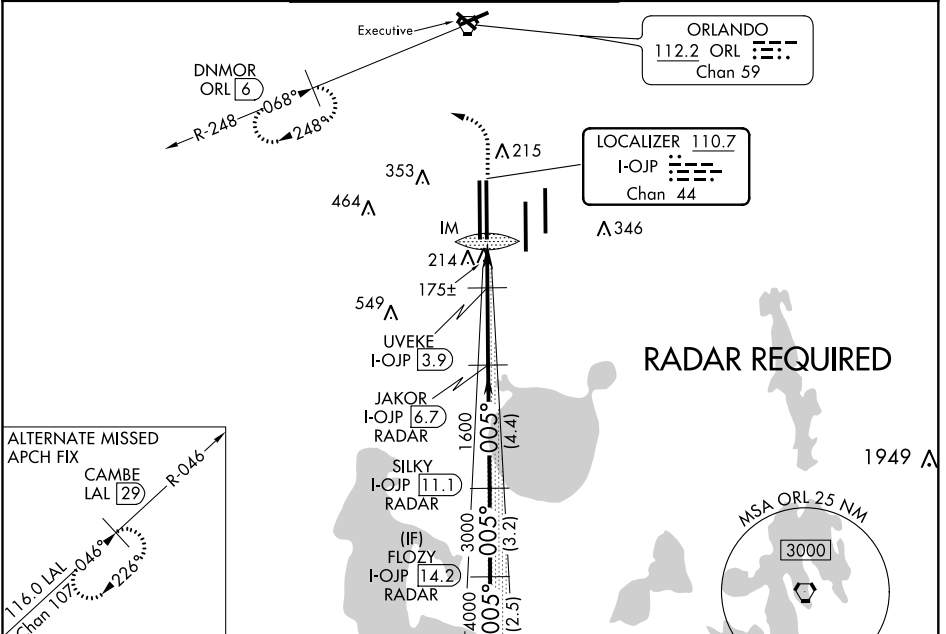


LOC/DME I-OJP <b>110.7</b> Chan <b>44</b>	APP CRS <b>005°</b>	Rwy Idg <b>11601</b> TDZE <b>92</b> Apt Elev <b>96</b>
---	------------------------	--

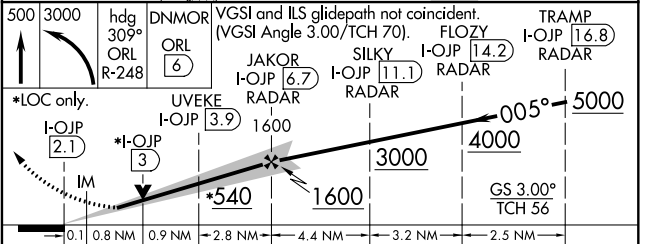
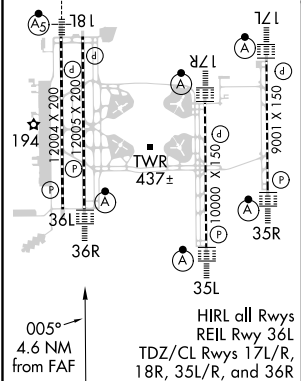
# ILS or LOC RWY 36R

ORLANDO INTL (MCO)

D-ATIS ARR <b>121.25</b> DEP <b>120.525</b>	ORLANDO APP CON <b>124.8 307.0</b>	ORLANDO TOWER <b>124.3</b> (Rwys 18L-36R, 18R-36L) <b>253.5</b> <b>118.45</b> (Rwys 17L-35R, 17R-35L) <b>253.5</b>		GND CON <b>126.4 275.8</b> (East) <b>121.8 275.8</b> (West)	CLNC DEL <b>134.7</b> <b>341.7</b>	CPDLC
		DME or RADAR required. Simultaneous approach authorized.		ALS-F-2 	MISSED APPROACH: Climb to 500 then climbing left turn to 3000 on heading 309° and on ORL VORTAC R-248 to DNMR/ORL 6 DME and hold, continue climb-in-hold to 3000.	



ELEV 96	<b>D</b>	TDZE 92
---------	----------	---------



CATEGORY	A	B	C	D
S-ILS 36R	292/18 200 (200-½)			
S-LOC 36R	540/24	448 (500-½)	540/45	448 (500-¾)
<input checked="" type="checkbox"/> CIRCLING	740-1	644 (700-1)	740-1¾ 644 (700-1¾)	740-2 644 (700-2)
UVEKE FIX MINIMUMS (DME REQUIRED)				
S-LOC 36R	440/24	348 (400-½)	440/30	348 (400-½)
<input checked="" type="checkbox"/> CIRCLING	740-1	644 (700-1)	740-1¾ 644 (700-1¾)	740-2 644 (700-2)

FAF to MAP 4.6 NM					
Knots	60	90	120	150	180
Min:Sec	4:36	3:04	2:18	1:50	1:32

SE-3, 31 DEC 2020 to 28 JAN 2021

SE-3, 31 DEC 2020 to 28 JAN 2021