

# JAGUAR SIX DEPARTURE

**TOP ALTITUDE:  
5000**

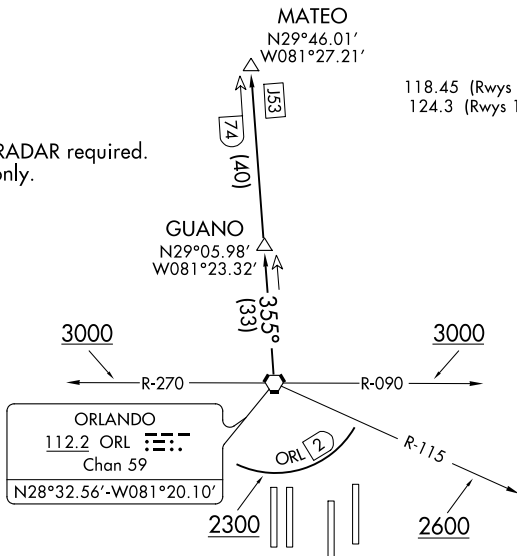
D-ATIS DEP  
120.525  
CLNC DEL  
134.7 341.7  
CPDLC  
GND CON

126.4 275.8 (East)  
121.8 275.8 (West)

ORLANDO INTL TOWER

118.45 (Rwys 17L-35R, 17R-35L) 253.5  
124.3 (Rwys 18L-36R, 18R-36L) 253.5

NOTE: DME and RADAR required.  
NOTE: Turbojets only.



### TAKEOFF MINIMUMS

Rwys 17L/R, 18L/R, 35L/R, 36L/R: Standard.

NOTE: Chart not to scale.

### DEPARTURE ROUTE DESCRIPTION

TAKEOFF RWYS 17L/R, 18L/R: Climb on heading as assigned, thence . . . .

TAKEOFF RWYS 35L/R: Climb on heading as assigned. Cross ORL VORTAC R-115 at or above 2600, cross ORL VORTAC R-090 or R-270 at or above 3000, thence . . . .

TAKEOFF RWYS 36L/36R: Climb on heading as assigned. Cross 2 DME south of ORL VORTAC at or above 2300, cross ORL VORTAC R-090 or R-270 at or above 3000, thence . . . .

. . . . for vectors to ORL VORTAC R-355 to GUANO, then on ORL VORTAC R-355 to MATEO. Maintain 5000. Expect further clearance to filed altitude/flight level 10 minutes after departure.