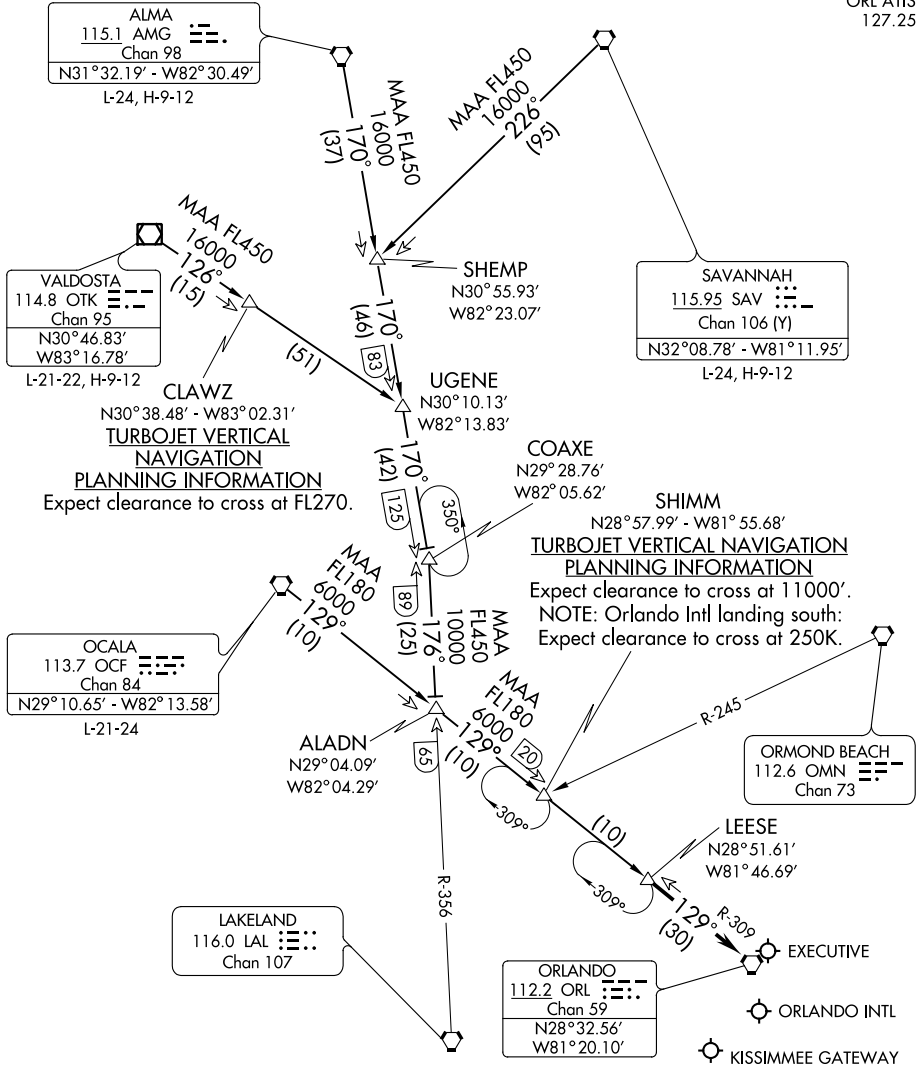


(LEESE.LEESE2) 20310
LEESE TWO ARRIVAL

AL-571 (FAA)

ORLANDO, FLORIDA

ORLANDO APP CON
 134.05 339.8
 ISM AWOS-3
 128.775
 MCO D-ATIS ARR
 121.25
 ORL ATIS
 127.25



CLAWZ
 N30°38.48' - W83°02.31'
TURBOJET VERTICAL
NAVIGATION
PLANNING INFORMATION
 Expect clearance to cross at FL270.

SHIMM
 N28°57.99' - W81°55.68'
TURBOJET VERTICAL
NAVIGATION
PLANNING INFORMATION
 Expect clearance to cross at 11000'.
 NOTE: Orlando Intl landing south:
 Expect clearance to cross at 250K.

NOTE: DME REQUIRED.

NOTE: Chart not to scale.

LEESE TWO ARRIVAL
 (LEESE.LEESE2) 07MAY09

ORLANDO, FLORIDA

SE-3, 31 DEC 2020 to 28 JAN 2021

SE-3, 31 DEC 2020 to 28 JAN 2021