

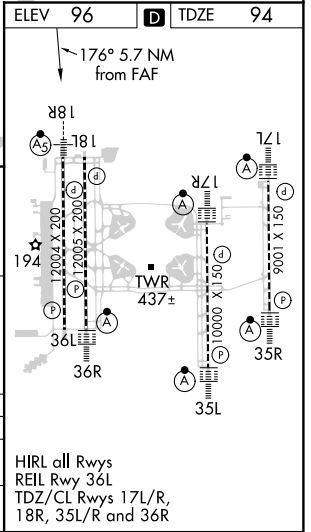
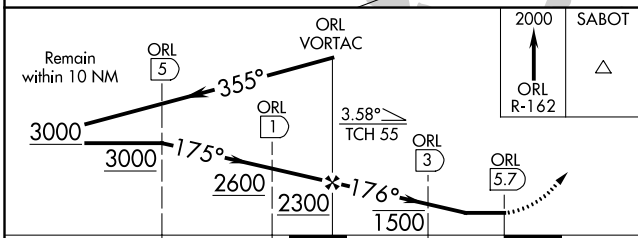
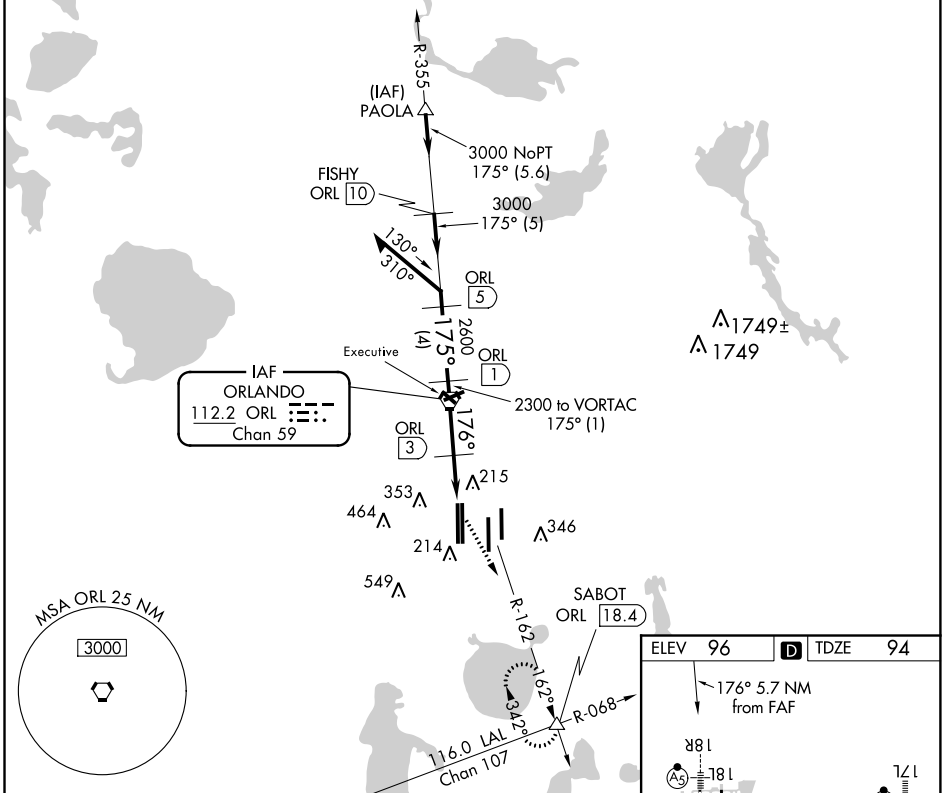
VORTAC ORL <b>112.2</b> Chan 59	APP CRS <b>176°</b>	Rwy Idg <b>12005</b> TDZE <b>94</b> Apt Elev <b>96</b>
---------------------------------------	------------------------	--

# VOR/DME RWY 18R

ORLANDO INTL (MCO)

<b>▼</b>	MALSR 	MISSED APPROACH: Climb to 2000 via ORL R-162 to SABOT INT and hold.
----------	-----------	---

D-ATIS ARR <b>121.25</b> DEP <b>120.525</b>	ORLANDO APP CON <b>124.8 307.0</b>	ORLANDO TOWER <b>124.3</b> (Rwys 18L-36R, 18R-36L) <b>253.5</b> <b>118.45</b> (Rwys 17L-35R, 17R-35L) <b>253.5</b>	GND CON <b>126.4 275.8</b> (East) <b>121.8 275.8</b> (West)	CLNC DEL <b>134.7</b> <b>341.7</b>	CPDLC
---	---------------------------------------	--	---	--	-------



CATEGORY	A	B	C	D
S-18R	540/24 446 (500-½)	540/40 446 (500-¾)	540/50 446 (500-1)	540/50 446 (500-1)
<b>C</b> CIRCLING	740-1 644 (700-1)	740-1¾ 644 (700-1¾)	740-2 644 (700-2)	740-2 644 (700-2)

SE-3, 31 DEC 2020 to 28 JAN 2021

SE-3, 31 DEC 2020 to 28 JAN 2021