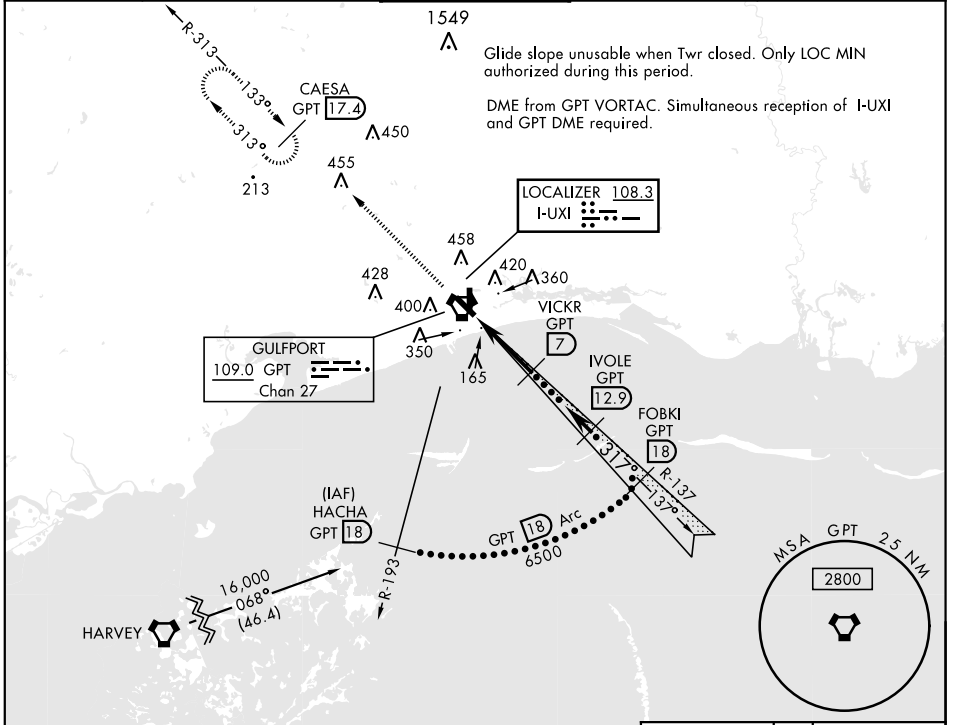


HI-ILS Y or LOC Y RWY 32

LOC I-UXI 108.3	APCH CRS 317°	Rwy Idg TDZE Arprt Elev 9002 28 28	AL-576 [USAF]	GULFPORT-BILOXI INTL (KGPT)
---------------------------	-------------------------	--	---------------	-----------------------------

RADAR or DME required.	MALSR 	MISSED APPROACH: Climb to 2000 on GPT VORTAC R-313 to CAESA/GPT 17.4 DME and hold.
<p>* When ALS inop increase CAT E RVR 40, RVR 18 authorized with use of FD or AP or HUD to DA.</p> <p>** When ALS inop increase RVR 55.</p>		

ATIS ★ 119.45	GULFPORT APP CON 124.6 354.1 130°-309° 127.5 254.25 310°-129°	GULFPORT TOWER★ 123.7 CTAF 0 339.8	GND CON 120.4 348.6	ASR
-------------------------	---	---	-------------------------------	-----



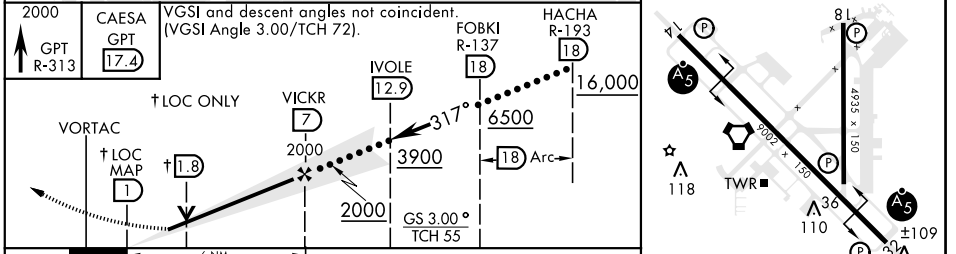
Glide slope unusable when Twr closed. Only LOC MIN authorized during this period.

DME from GPT VORTAC. Simultaneous reception of I-UXI and GPT DME required.

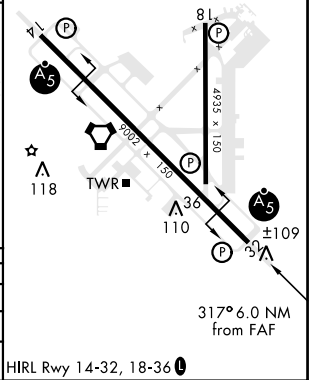
SC-4, 31 DEC 2020 to 28 JAN 2021

SC-4, 31 DEC 2020 to 28 JAN 2021

EMERG SAFE ALT 100 NM 3100	ELEV 28	TDZE 28
----------------------------	---------	---------



CATEGORY	C	D	E
S-ILS 32 *	228/24	200	(200-½)
S-LOC 32 **	380/30	352	(400-¾)
CIRCLING	820-2¼ 791 (800-2¼)	820-2½ 791 (800-2½)	820-2¾ 791 (800-2¾)



HI-ILS Y or LOC Y RWY 32