

LOC I-GPT 110.9	APP CRS 137°	Rwy Idg TDZE Apt Elev	9002 27 28
---------------------------	------------------------	-----------------------------	---------------------------------------

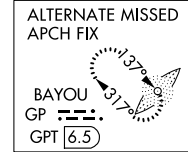
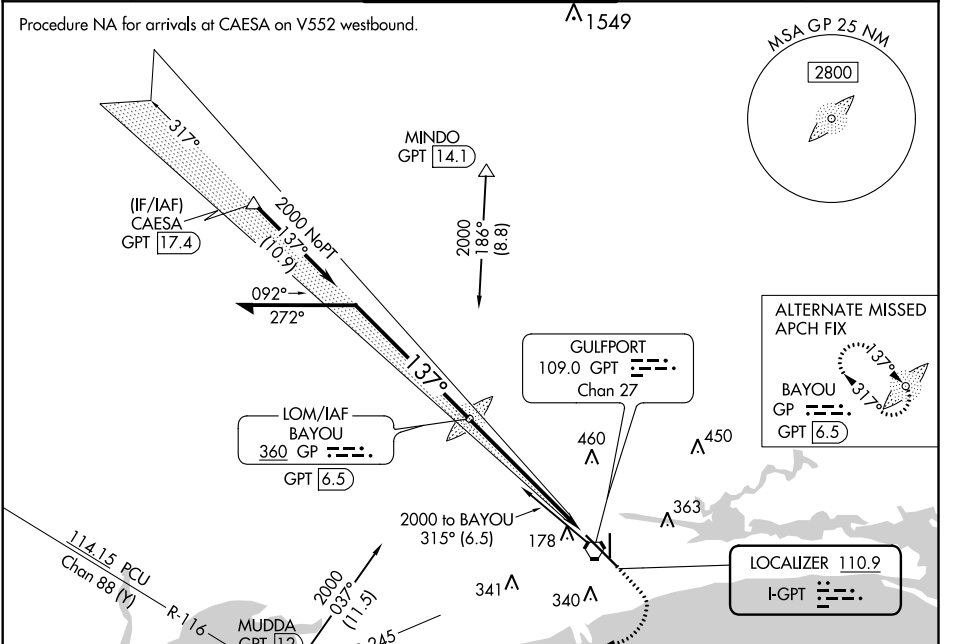
ILS Z RWY 14 (SA CAT II)

GULFPORT-BILOXI INTL (GPT)

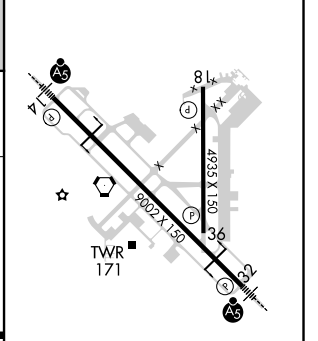
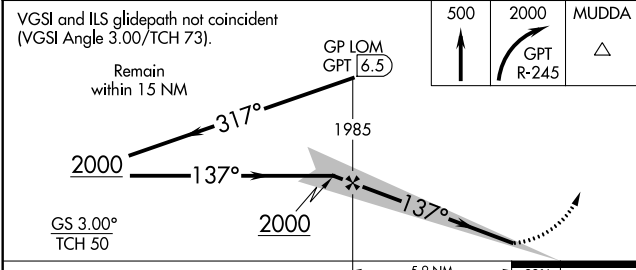
Reduced lighting: requires specific OPSPEC, MSPEC, or LOA approval and use of autoland or HUD to touchdown. Procedure NA when tower closed.	MALS 	MISSED APPROACH: Climb to 500 then climbing right turn to 2000 on GPT VORTAC R-245 to MUDDA INT/12 DME and hold.	

ATIS 119.45	GULFPORT APP CON * 127.5 254.25	GULFPORT TOWER * 123.7 (CTAF) 0 339.8	GND CON 120.4 348.6	UNICOM 122.95
-----------------------	---	---	-------------------------------	-------------------------

Procedure NA for arrivals at CAESA on V552 westbound.



ELEV 28	TDZE 27
---------	---------



CATEGORY	A	B	C	D
S-ILS 14	CAT II RA 113/12 100 DA 127			

SA CATEGORY II ILS - SPECIAL AIRCREW & AIRCRAFT CERTIFICATION REQUIRED

HIRL Rwy 14-32	
MIRL Rwy 18-36	

SC-4, 31 DEC 2020 to 28 JAN 2021

SC-4, 31 DEC 2020 to 28 JAN 2021