

LOC I-GPT 110.9	APP CRS 137°	Rwy Idg TDZE Apt Elev	9002 27 28
---------------------------	------------------------	-----------------------------	---------------------------------------

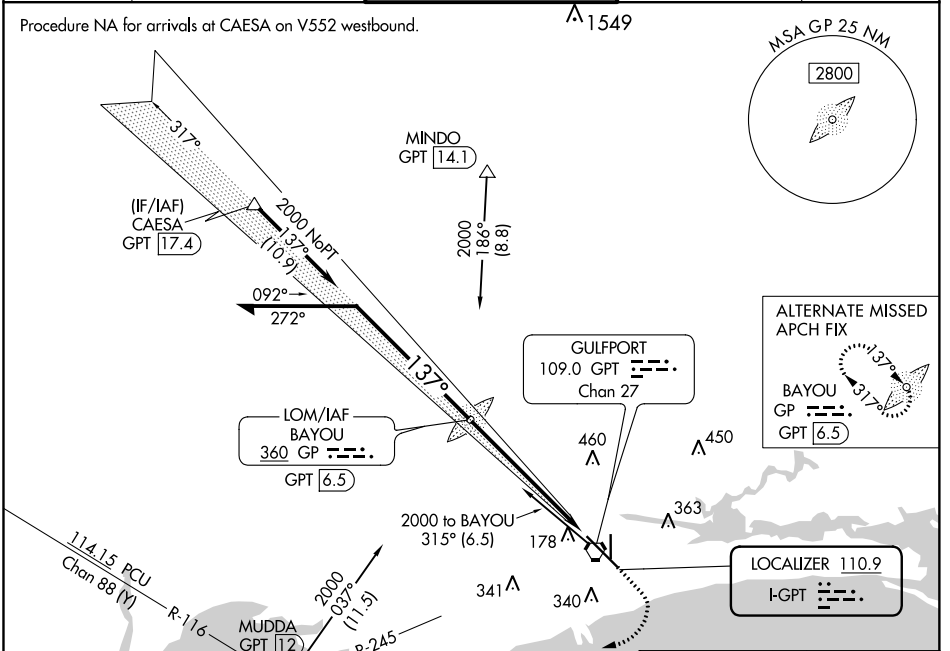
ILS Z or LOC Z RWY 14

GULFPORT-BILOXI INTL (GPT)

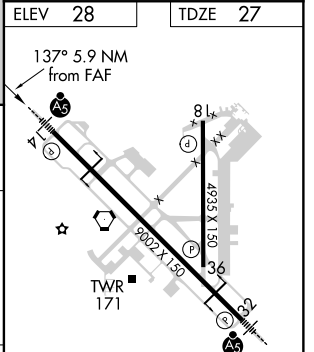
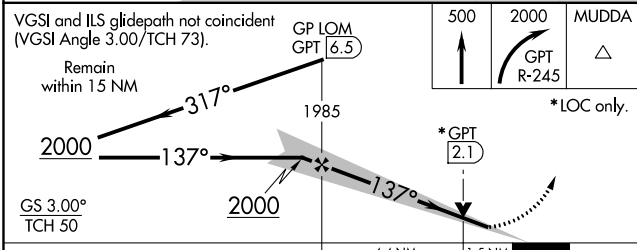
<p>ASR</p> <p>For inop ALS, increase S-ILS 14 Cat E visibility to RVR 4000 and S-LOC 14 Cat E visibility to 1½ SM. **RVR 1800 authorized with use of FD or AP or HUD to DA.</p>	<p>MALSR</p>	<p>MISSED APPROACH: Climb to 500 then climbing right turn to 2000 on GPT VORTAC R-245 to MUDDA INT/12 DME and hold.</p>
--	---------------------	---

ATIS 119.45	GULFPORT APP CON * 127.5 254.25	GULFPORT TOWER * 123.7 (CTAF) 0 339.8	GND CON 120.4 348.6	UNICOM 122.95
-----------------------	---	---	-------------------------------	-------------------------

Procedure NA for arrivals at CAESA on V552 westbound.



ELEV 28	TDZE 27
---------	---------



CATEGORY	A	B	C	D	E	
S-ILS 14**	227/24 200 (200-½)					
S-LOC 14	560/24	533 (600-½)	560/55		533 (600-1)	
CIRCLING	560-1	640-1	820-2¼	820-2½	820-2¾	
	532 (600-1)	612 (700-1)	792 (800-2¼)	792 (800-2½)	792 (800-2¾)	
	HRL Rwy 14-32					
	MIRL Rwy 18-36					
	FAF to MAP 5.9 NM					
	Knots	60	90	120	150	180
	Min:Sec	5:54	3:56	2:57	2:22	1:58

SC-4, 31 DEC 2020 to 28 JAN 2021

SC-4, 31 DEC 2020 to 28 JAN 2021